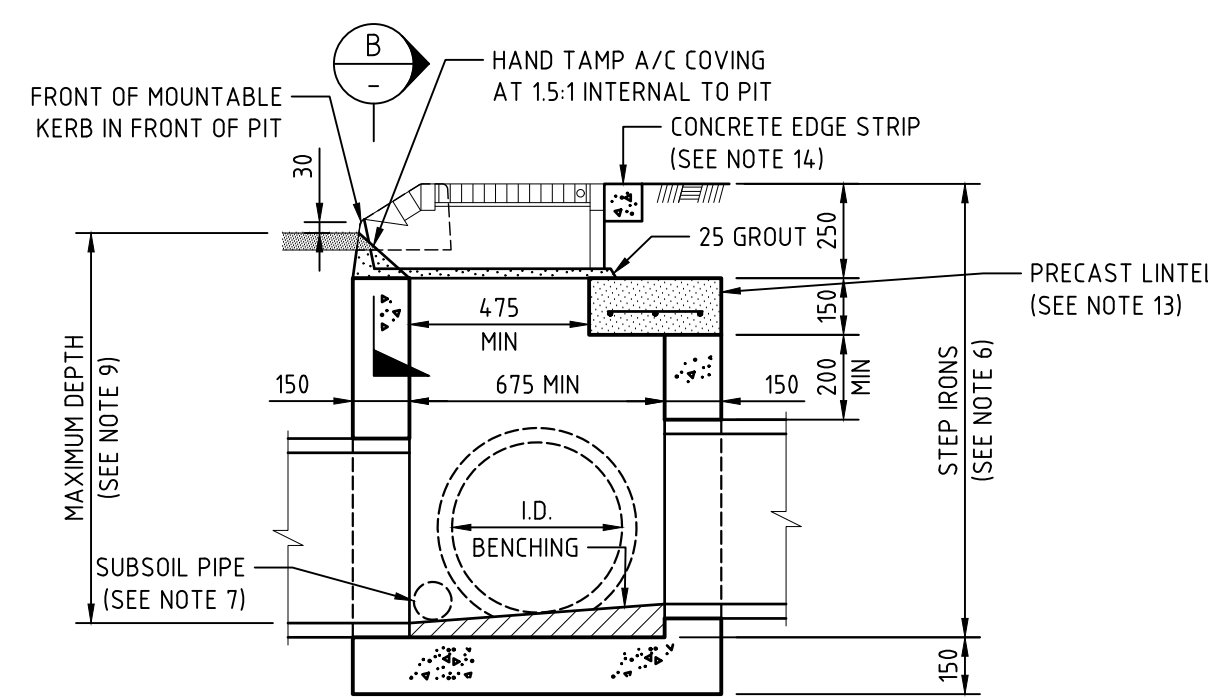
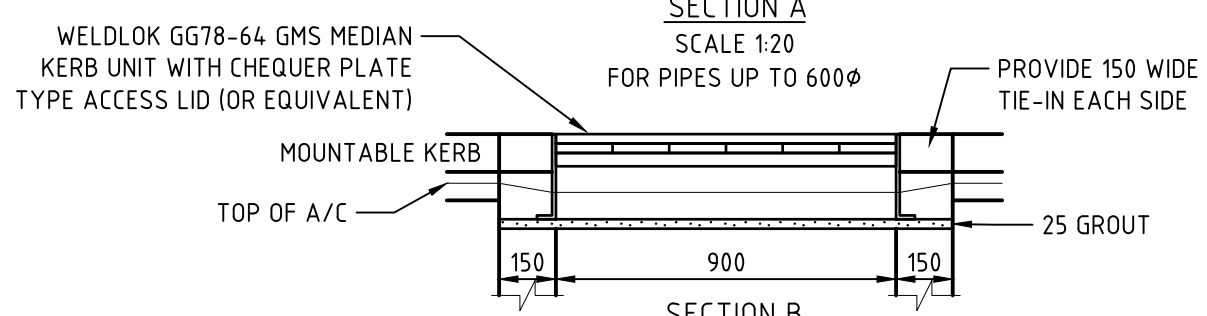


**PLAN**  
SCALE 1:20  
HINGED COVER AND CONCRETE  
EDGE STRIP OMITTED FOR CLARITY



**SECTION A**  
SCALE 1:20



**SECTION B**  
SCALE 1:20  
ELEVATION OF INLET

**NOTES**

1. THESE DRAWINGS SHALL BE READ IN CONJUNCTION WITH COUNCIL'S INFRASTRUCTURE SPECIFICATIONS.
2. ALL DIMENSIONS ARE IN MILLIMETRES.
3. CONCRETE FOR UNREINFORCED PITS:  
- 25 MPa GRADE N25:80:10 IN ACCORDANCE WITH AS1379 AND AS3600.
- CONCRETE FOR UNREINFORCED PITS:  
- 32 MPa GRADE N32:80:10 IN ACCORDANCE WITH AS1379 AND AS3600.
4. CONCRETE FINISHES:  
- ALL PEDESTRIAN OR TRAFFICABLE AREAS TO BE NON-SLIP WOOD FLOAT OR BROOM FINISH WITH ALL EXPOSED EDGES ROUNDED TO 5 RADIUS. OTHER EXPOSED SURFACES TO BE OFF STEEL FORM QUALITY.
5. STEEL REINFORCING BARS AND FABRIC TO COMPLY WITH AS/NZS4671 GRADE D500N.
6. PITS DEEPER THAN 600 TO BE FITTED WITH STEP IRONS AT 300 CENTRES TO AS1657.
7. MIN 90° SN20 SUBSOIL DRAINAGE PIPE 3000 LONG WRAPPED IN FABRIC SOCK TO BE PROVIDED ADJACENT TO INLET PIPES.
8. HINGES ON GMS GRATE TO BE PLACED ON TRAFFIC APPROACH SIDE. GMS GRATE TO BE BIKE SAFE AND LOAD RATED TO 'CLASS D' IN ACCORDANCE WITH AS3996-2006. WELD LOCK OR EQUAL.
9. FOR DETAILS OF PRECAST CONCRETE LINTELS SEE SW-115. CONSTRUCTORS TO BE AWARE OF VARIATIONS IN MANUFACTURER'S MOULDS FROM STANDARD PROFILE ON SW-115.
10. FOR DETAILS OF STANDARD CONCRETE KERB SHAPES SEE KG-100.
11. FOR DETAILS OF CONCRETE AND STEEL REINFORCEMENT FOR PITS GREATER THAN 1.5 METRES IN DEPTH REFER TO TABLE A.
12. ALL PITS ARE TO BE ADEQUATELY STREAMLINED AND BENCHED.
13. 350 WIDE x 150 DEEP x 1200 LONG PRECAST CONCRETE LINTEL WITH 3N12 @ 125 CENTRES (50 COVER TO BOTTOM).
14. 100x100 UNREINFORCED CONCRETE EDGE STRIP POURED INSITU TO PERIMETER OF GRATE UNIT. NOT REQUIRED FOR CONCRETE OR BRICK PAVED MEDIANS.
15. FOUNDING MATERIAL TO ACHIEVE A MINIMUM ALLOWABLE BEARING CAPACITY OF 150KPa.

'H' MAX DEPTH (M)	'L' & 'B' MAX WIDTH/LENGTH (M)	SECTION	CONCRETE GRADE	CONSTRUCTION METHOD
1.2	1.2	150 THICK WALLS UNREINFORCED	25MPa	INTERNAL FORMWORK ONLY WITH HAND VIBRATION
1.5	1.2	150 THICK WALLS UNREINFORCED	25MPa	INTERNAL AND EXTERNAL WALL FORMWORK WITH MECHANICAL VIBRATION
3.5	1.6	150 THICK WALLS REINFORCED AS DETAILED BELOW	32MPa	INTERNAL AND EXTERNAL WALL FORMWORK WITH MECHANICAL VIBRATION

REINFORCEMENT DETAILS: SL92 FABRIC CENTRAL OR N12-200 B/WAYS. HORIZONTAL BARS TO BE CENTRALLY PLACED. RETURN STEEL INTO BASE BY 200 MIN. PROVIDE 200 MIN. LAP AT WALL/WALL CORNERS PROVIDE 50 MIN COVER TO REINFORCEMENT

ACKNOWLEDGEMENT:  
PORT STEPHENS COUNCIL ACKNOWLEDGES THE ASSISTANCE OF THE CITY OF NEWCASTLE IN THE DEVELOPMENT OF THIS DRAWING.

SR PCG - STANDARDS REVIEW PROJECT CONTROL GROUP  
ASM - ASSET SECTION MANAGER

Date	Amendment	Rev	By	Approved
12.05.26	ISSUED FOR CONSTRUCTION	0	SR PCG	ASM



Project: STANDARD DETAILS

EDRMS No: PSC2016-01993-005

Drawing Title: MEDIAN INLET PIT FOR A MOUNTABLE KERB WITH GMS GRILL AND ENTRY LID

**APPROVED**

SHEET No: **SW-118**

Revision: 0

Date: 12.05.26

Sheet Size: A3