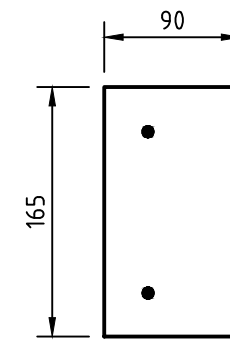
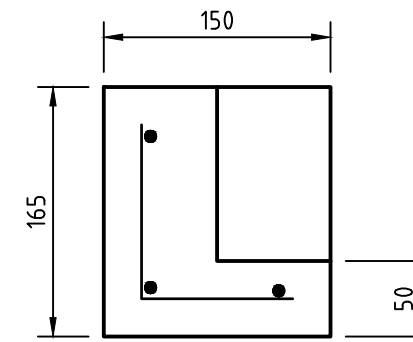


STANDARD AND MEDIAN SURROUND COMPONENTS

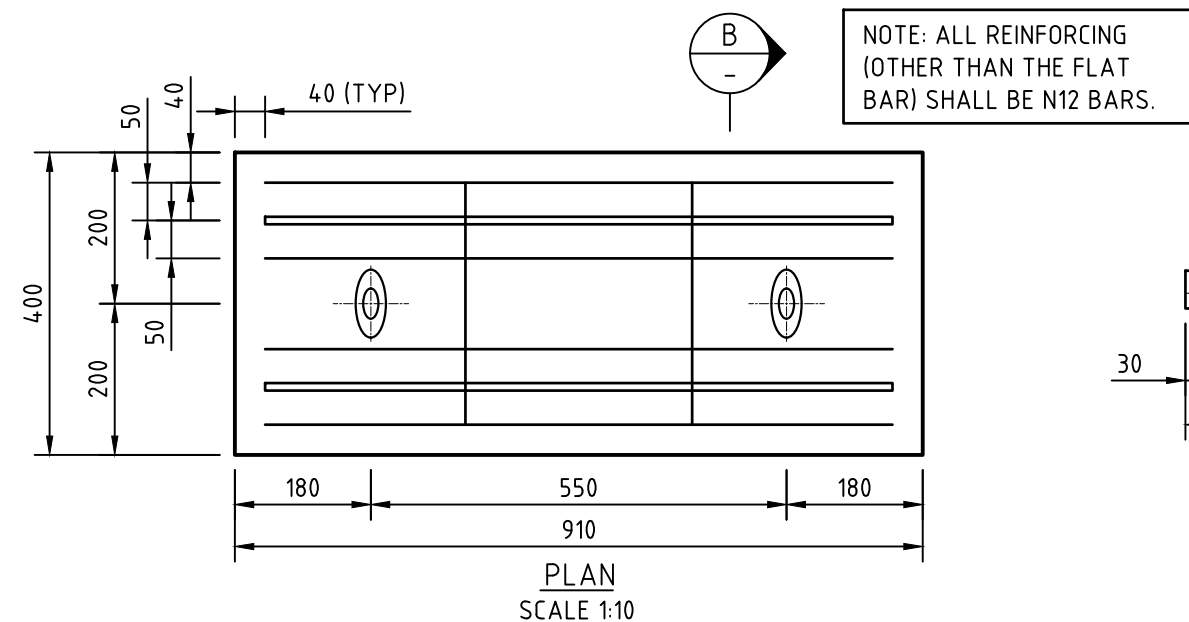


SECTION Y
SCALE 1:5

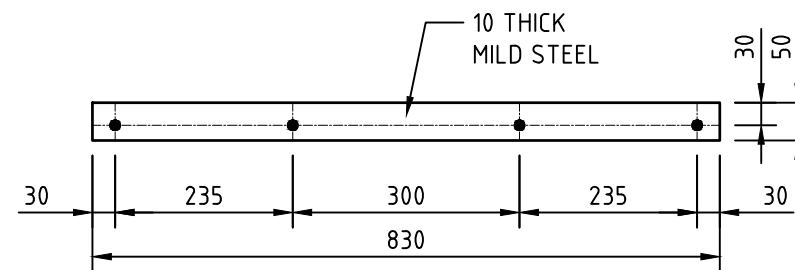


SECTION Z
SCALE 1:5

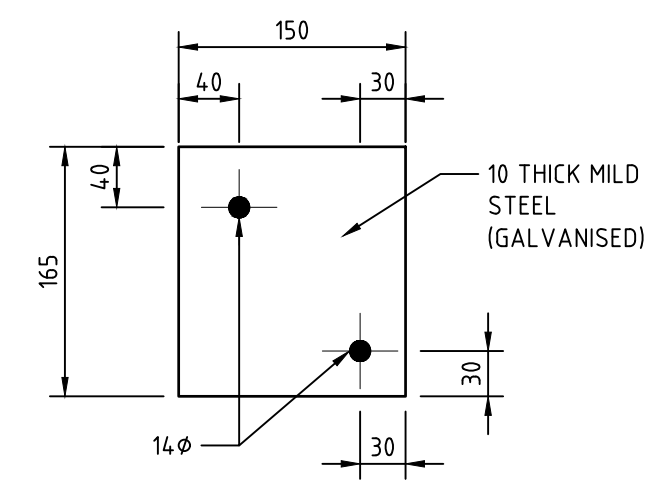
NOTES
 - ALL SURROUND REINFORCING SHALL BE 8mm PLAIN STEEL WIRE (W8)
 - END PLATE ASSEMBLIES SHALL BE HOT DIPPED GALVANISED AFTER MANUFACTURE. (REFER NOTES 10 & 11).



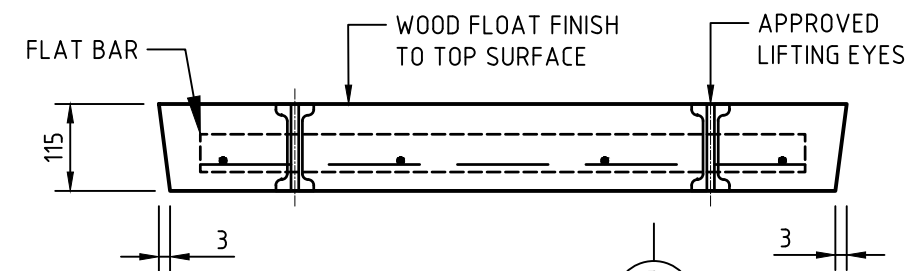
PLAN
SCALE 1:10



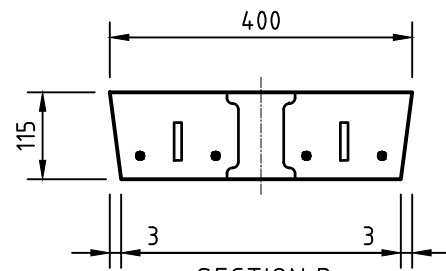
FLAT BAR
SCALE 1:10
(2 REQUIRED PER LID)



END PLATE DETAIL
SCALE 1:5



ELEVATION
SCALE 1:10



SECTION B
SCALE 1:10

STANDARD AND MEDIAN PIT LID COMPONENTS

ACKNOWLEDGEMENT:
 PORT STEPHENS COUNCIL ACKNOWLEDGES THE ASSISTANCE OF THE CITY OF NEWCASTLE IN THE DEVELOPMENT OF THIS DRAWING.

SR PCG - STANDARDS REVIEW PROJECT CONTROL GROUP
 ASM - ASSET SECTION MANAGER

Date	Amendment	Rev	By	Approved
12.05.26	ISSUED FOR CONSTRUCTION	0	SR PCG	ASM



Project: STANDARD DETAILS

EDRMS No: PSC2016-01993-005

Drawing Title: KERB INLET PIT PRECAST CONCRETE COMPONENTS - SHEET 2 OF 3

APPROVED

SHEET No: **SW-116**

Revision: 0

Date: 12.05.26

Sheet Size: A3