





Parking and Traffic Rules

School Zones



Take extra care when driving and parking in school zones. The rules are in place to protect your children. If you break the traffic rules in a school zone you are putting your child and other children at risk. Know the rules – you can be fined. **Please choose safety over convenience.**

ZONE	WHAT DOES IT MEAN?	WHY IS IT THERE?	OTHER
	<p>You cannot stop here for any reason (including queuing or waiting for a space).</p> 	<p>Keeps clear sight lines between drivers and children / pedestrians.</p>	<p>You cannot queue or block access in the road way while waiting to pull into the No Parking zone.</p> <p>A sign will display if certain times apply.</p>
	<p>You can stop here for a max of 2 min to drop off and pick up passengers. You must stay within 3 m of your vehicle at all times and cannot leave your vehicle unattended.</p>	<p>Provides a safe place for children / pedestrian set down and pick up.</p>	
	<p>You must not stop or park here for any reason (including queuing or waiting for a space) unless you are driving a bus.</p>	<p>Provides a safe place for large buses to set down and pick up school children.</p>	



Safety tips for school zones

EXITING THE CAR



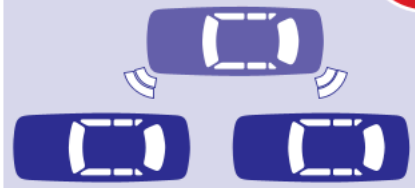
Make sure children use the footpath side door when getting in and out of a car.

APPLY BRAKE



Make sure the park brake is applied when the vehicle is stationary.

PARKING



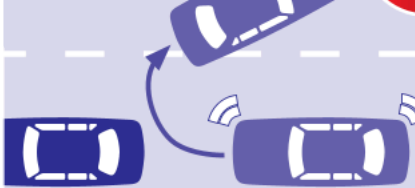
NEVER double park.

CROSSING



NEVER park across a pedestrian crossing.

NO U-TURNS



NEVER undertake a U-turn in close proximity to the school.

NO 3 POINT TURNS



NEVER undertake a three-point turn in close proximity to the school.

Safety tips for students

BUCKLE UP



Stay buckled up until the vehicle has stopped

STORE ITEMS



Make sure your bag and items are stowed safely

BE READY



Be ready to get out of the car with your belongings

EXIT SAFELY



Always use the rear footpath side door to get in and out