




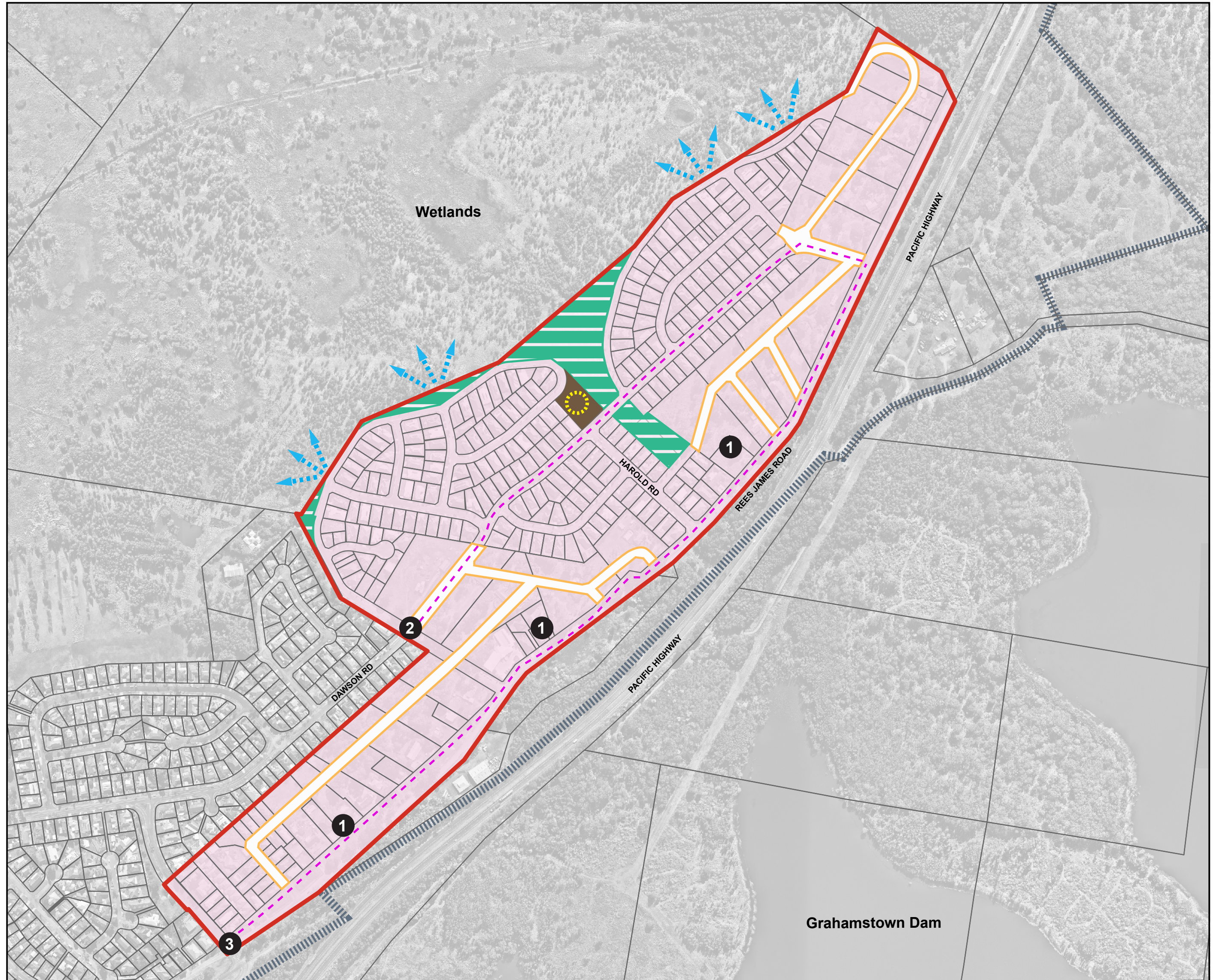
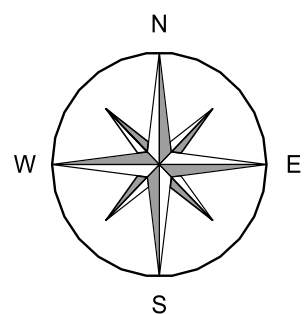
Figure 56: Rees James Road - Raymond Terrace Locality Controls Map

LEGEND

-  Rees James Road
-  Indicative road connections
-  Local street
-  Bus route
-  Drainage outlets
-  Drinking water catchment
-  Residential
-  Public recreation
-  Drainage reserve/basin
-  Local park

Common infrastructure

-  Pathway - Along northern side of Rees James Rd from north to Bellevue St
-  Intersection - Kuranga Av and Dawson Rd
-  Intersection - Bellevue St, Rees James Rd and Adelaide St



© Nearmap