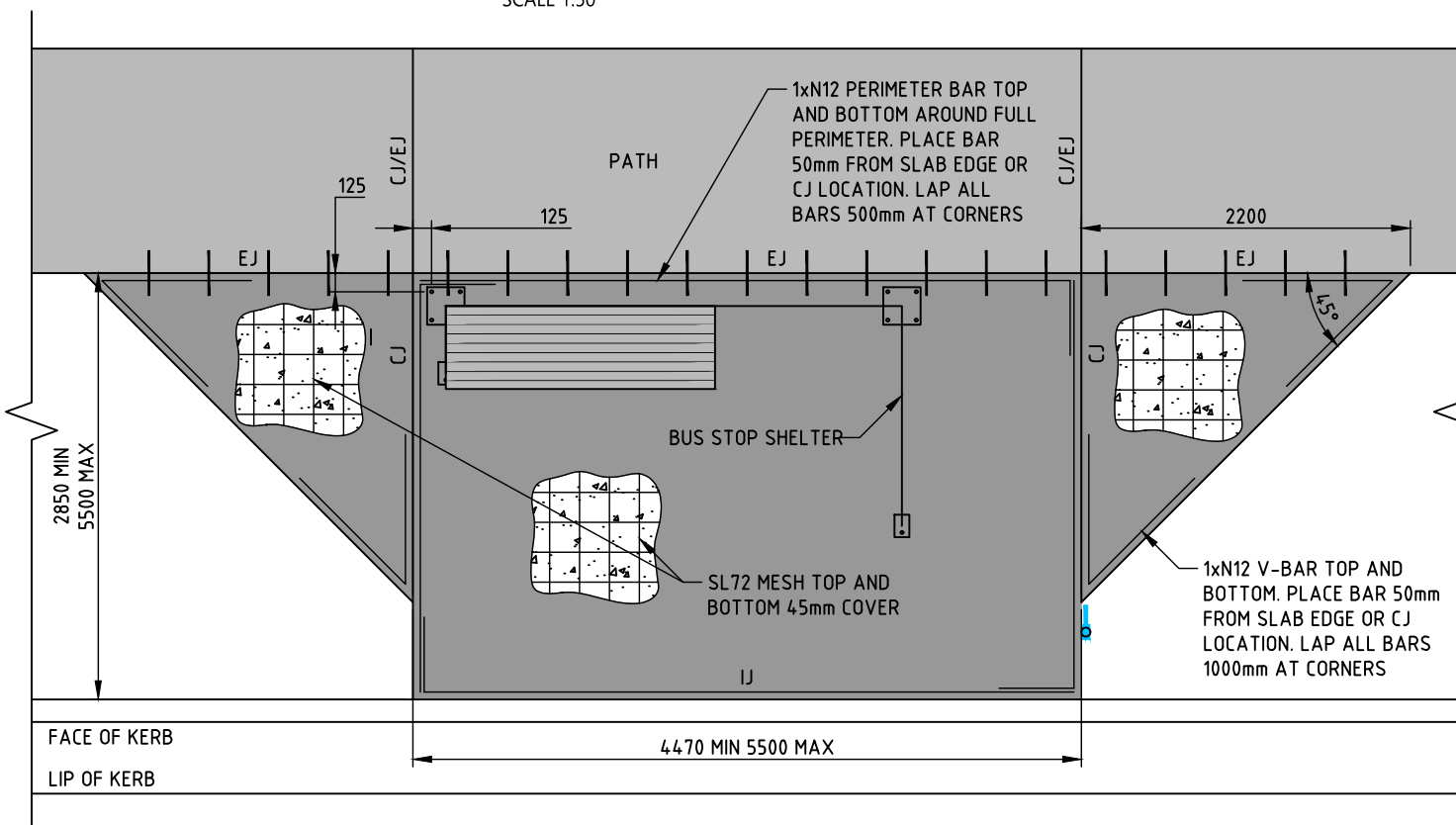


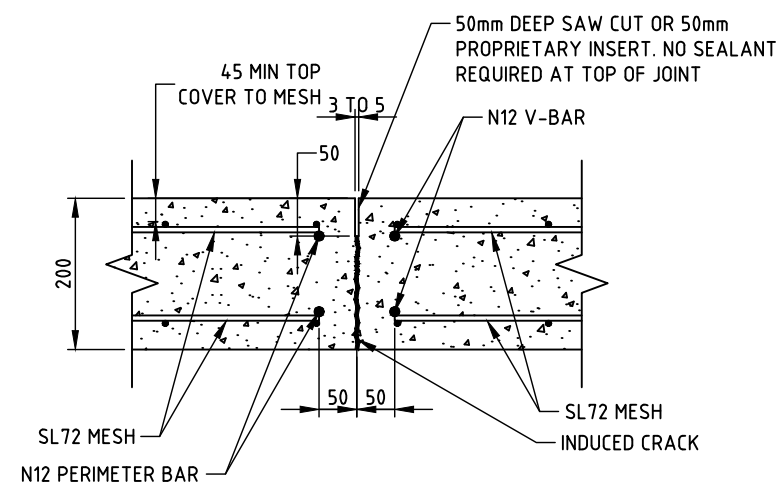
REINFORCEMENT DETAIL - TYPE 1 BUS STOP WITH SHELTER SET BACK FROM PATH

SCALE 1:50



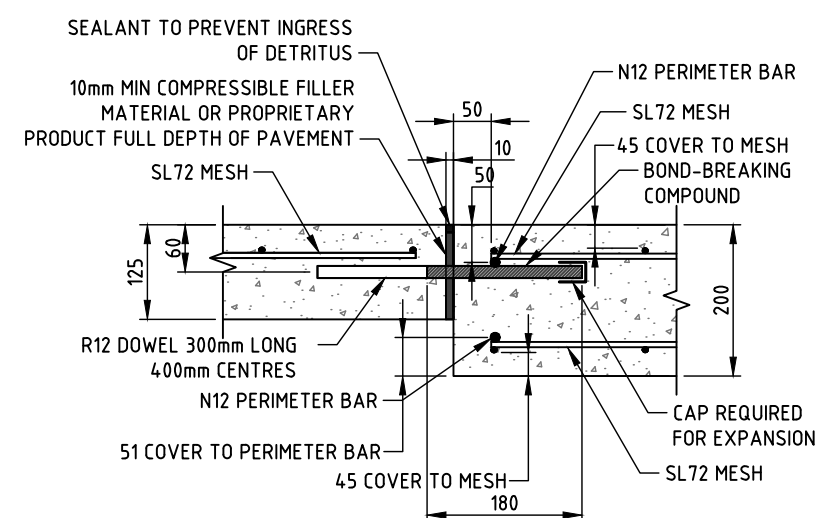
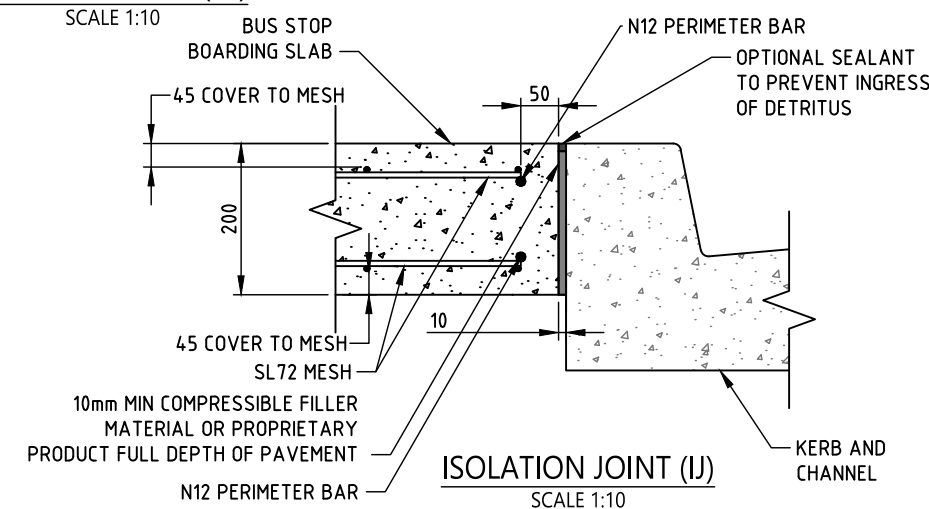
REINFORCEMENT DETAIL - TYPE 2 BUS STOP WITH SHELTER IN FRONT OF PATH

SCALE 1:50



CONTROL JOINT (CJ)

SCALE 1:10

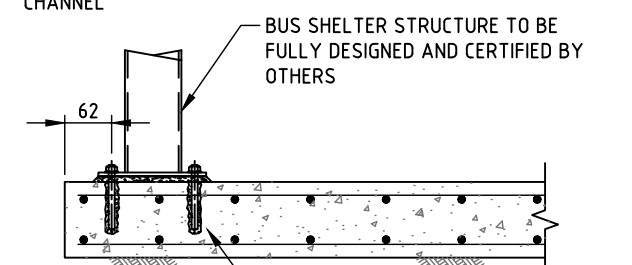


EXPANSION JOINT (EJ) PATH TO BUS STOP SHELTER BOARDING SLAB

SCALE 1:10

NOTES:

- ALL SLABS (UNLESS OTHERWISE NOTED) TO BE 200mm THICK, REINFORCED WITH SL72 MESH TOP AND BOTTOM. ENSURE FULL AND CONTINUOUS BEARING ON 100kPa (ALLOWABLE) FIRM NATURAL GROUND OR COMPACTED FILL WITH A COMPACTION OF 100% STANDARD DRY DENSITY.
- THE CONCRETE SLAB AND ANCHOR FIXINGS ARE DESIGNED BASED ON SITE CONDITIONS DETAILED IN THE NOTES ON SHEET 3 AND THROUGHOUT THE DRAWING. IF ANY OF THE SITE CONDITIONS DIFFER FROM THOSE DESCRIBED ON THESE DRAWINGS, FURTHER ADVICE WILL BE REQUIRED FROM A QUALIFIED STRUCTURAL ENGINEER PRIOR TO CONSTRUCTION COMMENCING.
- CONCRETE SURFACE SHALL BE BROOM BRUSHED PERPENDICULAR TO ROAD ALIGNMENT TO A SLIP-RESISTANT TEXTURE IN ACCORDANCE WITH COUNCIL'S INFRASTRUCTURE SPECIFICATION.



SECTION A

SCALE 1:20

ALL FIXINGS TO BE M16 ICCONS BIS-HY (4.6 GRADE HD6) OR EQUIVALENT WITH 125mm EMBEDMENT INTO THE CONCRETE. ALL HOLES SHALL BE DRILLED AND THOROUGHLY CLEARED IN STRICT ACCORDANCE WITH THE MANUFACTURER'S SPECIFICATIONS. (NOTE THAT HAMMER DRILL IS REQUIRED WITH COMPRESSED AIR CLEANING). ALL ANCHORS SHALL HAVE A MINIMUM EDGE DISTANCE OF 125mm MEASURED FROM CENTRE OF BOLT TO EDGE OF CONCRETE SLAB OR CONSTRUCTION JOINT

ACKNOWLEDGEMENT:
PORT STEPHENS COUNCIL ACKNOWLEDGES THE ASSISTANCE OF THE CITY OF NEWCASTLE IN THE DEVELOPMENT OF THIS DRAWING.

SR PCG - STANDARDS REVIEW PROJECT CONTROL GROUP
ASM - ASSET SECTION MANAGER

Date	Amendment	Rev	By	Approved
20.06.24	ISSUED FOR CONSTRUCTION	0	SR PCG	ASM



Project:	STANDARD DETAILS
EDRMS No:	PSC2016-01993-005
Drawing Title:	BUS STOP / SHELTER SHEET 2 OF 5

APPROVED	Revision: 0
SHEET No: BS-101	Date: 20.06.24
	Sheet Size: A3