

Tomaree Library and Community Centre

VENUE HIRE

The Tomaree Library and Community Centre (TLACC) is a multi-purpose venue situated in the heart of Salamander Bay, surrounded by ample parking and a short walk from public transport.

The centre boasts 6 different rooms with the ability to accommodate up to 100 people.

A range of groups, services and activities are available on a regular basis. These include the library, recreational and social activities, healthy lifestyle, spiritual, educational, cultural and hobby groups.

For further details related to specific services and activities, please contact the centre directly or visit portstephens.nsw.gov.au.



Phone 02 4988 0670

Email tomareel@portstephens.nsw.gov.au

7 Community Close, Salamander Bay

PORTSTEPHENS.NSW.GOV.AU | Find us on 

Port Stephens 
LIBRARY
Start here, go anywhere . . .

Features and facilities

- kitchen
- disabled access
- ample car parking
- enclosed courtyard areas
- close to public transport
- flexible opening hours (7 days a week)
- attractive hire rates
- reduced hire rates for non-profit organisations

Equipment

Tables and chairs available in each room. Audio visual facilities such as projector, whiteboard, TV/DVD are available on request.*

Note: In some rooms you will be required to set up and pack down equipment.

*These may incur an additional fee.

Rooms available

Room facilities are available to suit varying needs for events, functions, workshops, leisure activities, training programs or individual consultations.

Note: Seating refers to theatre style seating unless stated otherwise.

Waratah

- 16 metres x 8 metres
- 50% linoleum and 50% carpet flooring
- seats 100 people
- direct kitchen access with dishwasher, oven, fridge and microwave

Acacia and Boronia rooms

- 6 metres x 8 metres each
- sprung wooden flooring
- shared kitchen access
- each room seats 35 people
- Acacia and Boronia rooms may be used as one room to seat 70 people or divided with foldable wall

Gymea Lily

- 6 metres x 6 metres
- seats 30 people
- inside library with direct courtyard access
- fixed projector, screen and speaker system

Lilly Pilly

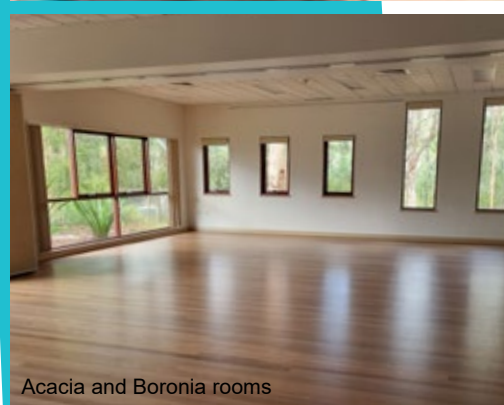
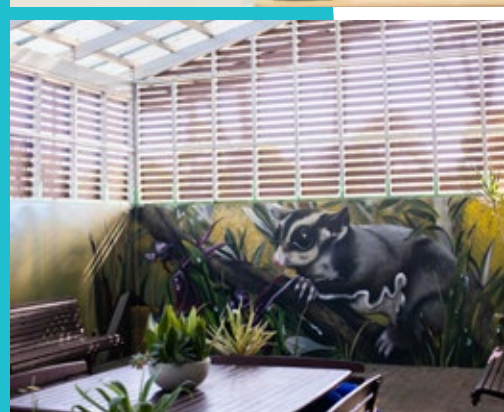
- 4 metres x 4 metres
- seats 8 people
- ideal for one-on-one private consultation

Christmas Bush

- 3 metres x 4 metres
- seats 8 people around boardroom style table

Booking requirements

All users of the centre are required to complete a Booking Form, Facility Use Agreement and provide evidence of \$20 million public liability insurance to confirm booking.



Phone 02 4988 0670

Email tomareel@portstephens.nsw.gov.au

7 Community Close, Salamander Bay

PORTSTEPHENS.NSW.GOV.AU | Find us on

Port Stephens **LIBRARY**

Start here, go anywhere . . .