



# Little Beach accessibility precinct

## Your questions answered

Members of the local community had a number of questions about the Little Beach accessibility precinct after we distributed our last newsletter. We wanted to make sure you had all the information and are providing this fact sheet to help provide answers to those questions.

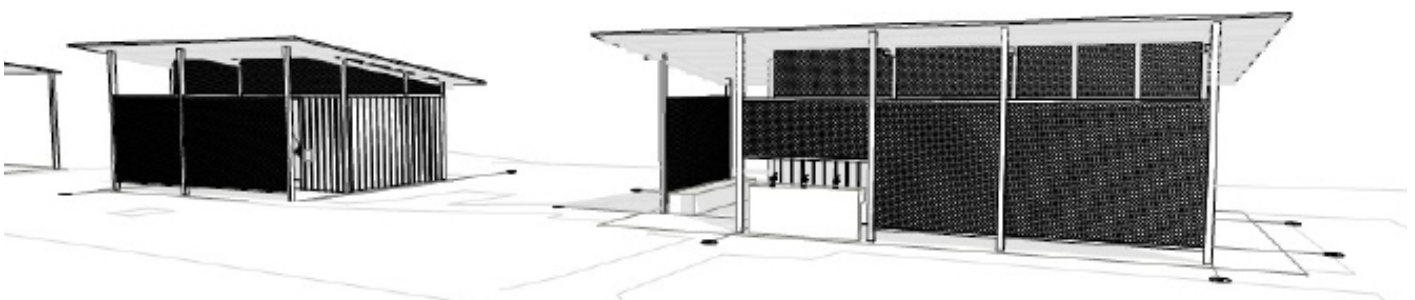
## How did we get here?

Community feedback in March 2021 suggested that the new toilets must provide internal change spaces. With this feedback we sought more funding to deliver amenities with change rooms. We were successful in securing external funding earlier this year, and have since been working to identify the best location for the amenities considering public use, accessibility, existing sewerage services. We have now finalised the location and the design for the amenities.

## What is planned for Little Beach?

Little Beach has been identified as a “Changing Places” location that provides suitable facilities for all abilities to enjoy. The Little Beach precinct lends itself to this focus as it is level, with easy access to the beach from vehicles. The new dedicated changing places amenities will be the first in the local government area. We’re really trying to make Little Beach a special precinct that supports wellbeing, inclusivity, accessibility and making all feel welcome.

The nearby Halifax Holiday Park has already embraced this by providing accessible cabins with dedicated wheel chair access, maneuvering space and accessible bathrooms. The ‘Changing Places’ amenities include a ceiling hoist, adult sized changing table, privacy screen and additional circulation space to meet the needs of people with complex disabilities and their carers.



### Why are we upgrading the existing toilet?

The existing toilet is outdated and is in poor condition costing Council more to service. With a lack of storage areas, the disabled amenities cubicle is currently utilised for beach wheel chair storage which effectively makes the toilet inaccessible.

### Why is the toilet being moved?

The new location of the toilet is considered to be the optimal location for the following reasons:

1. The buildings were aligned with the public walkway across beach road to minimise view obstruction from adjacent residences.
2. The building is located towards the front of the reserve to optimise accessibility from the shared path and to reduce obstruction to beach goers moving to and from the water.
3. Proximity to the boat ramp to service boaters.
4. Locating the toilet closer to the playground would require a pump operated sewer system. This is considered high risk if the pump fails and sewage overflows into the water. It would mean greater costs to operate and maintain.
5. Constructing the toilet away from the current location allows the current building to remain operational during construction – reducing disruption to beach goers and cost of construction.

### Why is the new building so much bigger than the current building?

The current building has a total footprint of approximately 68m<sup>2</sup>. The total footprint of the two new buildings is approximately 155m<sup>2</sup>. The larger footprint includes facilities not provided for before: a dedicated beach wheelchair store room, dedicated change rooms and the 'changing places' compliant toilet.

### Why is the wheelchair storage located away from the wheelchair access ramp?

The wheelchair storage was co-located with the 'Changing Places' amenities so that users can wash off, change and transfer chairs all in the one location.

### What is a 'Changing Places' facility?

A 'Changing Places' accredited facility provides additional support for people that struggle to use typical accessible facilities. They provide adult change facilities, generous circulation spaces and internal showers. The facilities are only able to be accessed by those with an MLAK. There are currently only two Changing Places accredited facilities in the Hunter; Westfield Kotara and Caves Beach public amenities. You can find out more information about Changing Places at their website: <https://changingplaces.org.au/>



#### Keep up-to-date with the Little Beach upgrade



[pscouncil.info/LittleBeach](https://pscouncil.info/LittleBeach)



02 4988 0255



[council@portstephens.nsw.gov.au](mailto:council@portstephens.nsw.gov.au)

