



# Medowie Place Plan Engagement Report

Planning for your place  
September 2022



**PORT STEPHENS**  
COUNCIL



# Contents



	<b>Page</b>
<b>1. Summary</b>	<b>2</b>
<b>2. Engagement methods</b>	<b>4</b>
<b>3. Key engagement findings</b>	<b>5</b>
 <b>Appendices</b>	 <b>10</b>
 <b>Appendix A: Liveability Index survey</b>	 <b>11</b>
<b>Appendix B: Town Centre survey</b>	<b>13</b>
<b>Appendix C: Workshop 1 (Sept 2021)</b>	<b>18</b>
<b>Appendix D: Workshop 2 (Sept 2021)</b>	<b>29</b>
<b>Appendix E: Workshop 3 (June 2022)</b>	<b>37</b>
<b>Appendix F: School workshops (Aug 2022)</b>	<b>48</b>
<b>Appendix G: Check-In survey (Aug 2022)</b>	<b>59</b>

# 1. Summary

Place Plans are a new way of planning for the growth of the unique towns and villages across Port Stephens. Place Plans provide a filter on the Port Stephens Local Strategic Planning Statement and other strategic documents to create actions which improve the liveability and wellbeing of our communities.

Place plans use a ‘bottom-up’ approach and collect the shared ideas and aspirations of communities through a 4 phase engagement approach:

- |         |  |
|---------|--|
| Phase 1 | Liveability Index survey and Town Centre survey (Sept 2020)  |
| Phase 2 | Workshops with local residents and businesses to set priorities and a vision for Medowie (Nov 2021).<br>Additional workshops were held with students from 2 Medowie schools to investigate opportunities for a town centre expansion at 38 Ferodale Road (June and August 2022). |
| Phase 3 | A check-in survey on the draft place plan actions and concept plan for the town centre expansion site sought feedback from Phase 2 (Aug 2022) workshop participants.   |
| Phase 4 | The draft Medowie Place Plan will be available during public exhibition for community comment (Nov 2022)   |

## What the community told us

The top priorities identified in the Liveability Index for Medowie included:

1. Evidence of recent public investment (roads, parks, schools)
2. Quality of public space (footpaths, verges, parks)
3. Walking/jogging/bike paths that connect housing to communal amenity (shops, parks)
4. General condition of public open space (street trees, footpaths, parks).
5. Sense of neighbourhood safety (from crime, traffic, pollution)
6. Protection of the natural environment
7. Elements of natural environment (natural features, views, vegetation, topography, water, wildlife)

The community workshops explored the survey results in more detail and generated ideas for future actions, such as the improvement of the town centre, creating streets that give pedestrians priority over cars, and enhancing the character of Medowie as a ‘place of tall trees’.

Other opportunities include the creation of a new regional park with a play space and the protection of key habitat and wildlife corridors. Ideas for place activation included running a farmers market, organising an outdoor cinema event, or creating a public mural.

## **Observations**

The Medowie workshops were a very positive experience for both participants and staff. The residents were supportive of the place plan process and were very interested in working together to implement actions of the future plan.

There was a high level of enthusiasm from the Medowie Place Plan workshop participants and strong support for community led initiatives. This follows on from the strong engagement and support provided by the Medowie community as part of the recent Medowie 7 Day Makeover.


## **How to use this Engagement Report**

This Engagement Report includes a complete overview of all survey and workshop outcomes and informs the Medowie Place Plan.

This report continues to provide a rich source of information for creating a more attractive Medowie town centre. It includes ideas and inspiration for activities that can lift community wellbeing.

The appendices to this report provide detailed information.

## 2. Engagement methods

ENGAGEMENT METHODS		
ACTIVITY	DESCRIPTION	STATS
<b>Phase 1</b>	Liveability Index survey	345 surveys completed by Medowie residents
<b>Liveability Index reports</b>	Town Centre survey - Ferodale Road, Medowie	119 surveys completed
<b>Phase 2</b>	Workshops investigated the outcomes of the Liveability Index survey to provide more detail and exploring ideas and solutions.	
	Workshop 1: 12 September 2021	24
	Workshop 2: 19 September 2021	23
<b>Community Workshops</b>	Workshop 3 (face to face): 8 June 2022	23
	Workshop 3 (online): 9 June 2022	11
	Workshop 3 (school students 1): 8 August 2022	8
	Workshop 3 (school students 2): 8 August 2022	28
	<b>Total workshop attendees</b>	<b>117</b>
<b>Phase 3</b>	People who attended at least one of the previous workshops had the opportunity to respond to a short survey to confirm the direction of the draft place plan and provide feedback on the draft concept plan for the town centre expansion site at 38 Ferodale Rd (August 2022).	There were <b>38</b> visitors to the survey site, with <b>14</b> complete surveys submitted.
 <b>Medowie Place Plan check-in survey</b>		

### 3. Key engagement findings

This chapter provides a brief overview of the key findings of the various engagement activities that guide the Medowie Place Plan. Detailed information about the methodology used and community responses are available in the appendices.

#### Phase 1 – Liveability Index and town centre surveys

##### Liveability Index survey

In September 2020, Council undertook the first Port Stephens wide liveability survey. About 345 people from Medowie completed the survey and told us what they value about their place and how it is performing. This data was used as the basis for the first workshop series held in September 2021.

The Liveability Index survey shows that the top five values for Medowie are:

1. Elements of the natural environment (natural features, views, vegetation, topography, water wildlife).
2. Locally owned and operated business.
3. Sense of neighbourhood safety (from crime, traffic, pollution).
4. General condition of public open space (street trees, footpaths, parks)
5. Local businesses that provide for daily needs (grocery stores, pharmacy, banks).

The top priorities identified in the liveability index for Medowie included:

1. Evidence of recent public investment (roads, parks, schools)
2. Quality of public space (footpaths, verges, parks)
3. Walking/jogging/bike paths that connect housing to communal amenity (shops, parks)
4. General condition of public open space (street trees, footpaths, parks)
5. Sense of neighbourhood safety (from crime, traffic, pollution)
6. Protection of the natural environment
7. Elements of natural environment (natural features, views, vegetation, topography, water, wildlife)

For more detail, see **Appendix A**.

**Note:** a more recent analysis of the data in Sept 2022 resulted in a minor reduction in the number of priorities. However, the Medowie Place Plan has responded to the full set of priorities as listed the above.

## **Town Centre survey (Ferodale Road near the Community Hall)**

Council conducted a site-specific town centre survey at Ferodale Road, between Peppertree Road and Medowie Road (April 2021). This survey received 119 responses and some of the priorities identified include:

- Things to do in the evening (like shopping, dining, and entertainment)
- Maintenance of public spaces and street furniture
- Cleanliness of public space
- Walking paths that connect to other places
- Ease of walking around (including crossing the street, moving between destinations)
- Elements of the natural environment (like views, vegetation, topography, and water)

For more detail, see **Appendix B**.

## **Phase 2 – Community workshop findings**

A series of workshops were held in 2021 and 2022 to offer community, businesses, community groups, and key stakeholders the opportunity to share their insights and vision for Medowie.

### **Workshop 1 and 2 findings**

Workshops 1 and 2 were undertaken in an online environment during lockdown. Considering the circumstances, attendance at both workshops was excellent, with 47 and 34 attendees respectively.

The workshops aimed to get a better understanding of the Liveability Index survey outcomes for Medowie. Discussions with workshop attendees provided more detail about the values and priority areas identified.

Some of the key findings include:

- Create more safe pathways and better connections for pedestrians and cyclists between neighbourhoods and to surrounding areas.
- Create additional or improved public recreation spaces for all ages and abilities.
- Improve and utilise opportunities for bushwalking and mountain biking.
- Investigate opportunities for a new quality public place, like a town square, for people to meet.
- More opportunities for outdoor music or entertainment like a festival.
- Make outdoor spaces more attractive and convenient with additional seating, lighting, public art, and signage.

Workshop 2 attendees produced a series of Action Plans based on quick win and big picture ideas:

Quick Wins	Big Picture
Run food truck nights	Develop a community garden
Implement a local park run	Run a farmers market
Street library in Bower playground	Develop a Regional Play Space
Shade trees along new Medowie Road path	More shared paths around Medowie

For more detail on workshops 1 and 2, see **Appendices C and D**.

### Workshop 3 findings

Workshop 3 focussed on the site at 38 Ferodale Road, which is critical for the ongoing development of the town centre. Face-to-face and online workshops were offered, with 23 and 11 people attending respectively.

Major themes considered were Community and Recreation, Movement and Place, and the Town Centre expansion site.

Some key points from this workshop are:

- The site could include retail premises, housing, tourist accommodation, pathways, recreation and play spaces, and a meeting place for Medowie.
- Retail space should be catering for small-scale businesses like boutique shops, cafes, and restaurants.
- A town square should be included and offer space for activities.
- The village/rural character of Medowie should be protected and development should fit in.
- Pedestrian priority, a pedestrian friendly environment, and walkability is important. Paths should connect various point within the town centre.
- The western part of the site could be considered for future conservation.
- Many ideas were provided for play spaces, a potential skate park, an outdoor recreation area and embellishments like seating, lighting, shelters.

Detailed information is included in **Appendix E**.



## School workshop findings

School workshops were held at Medowie Public School (8 students) and Catherine McAuley Catholic College (28 students) in August 2022. It was very beneficial for the development of the place plan to be able to speak directly with young people because:

- A very limited number of young people were engaged through the Liveability Index survey.
- Young people may be reluctant to participate in workshops with adults.
- It is not always possible to approach school-aged children via schools due to a busy curriculum.

The workshop encouraged students to think about the needs of various users of the town centre and the opportunities offered by the town centre expansion site (38 Ferodale Road). They used this information to create a plan/design for the site. The topics they considered were movement, playing, shopping, housing, environment, and community facilities.

Some key points that they raised include:

**Things to Do** – Students had a strong interest in more things to do, like swimming pools, dog parks, events, outdoor cinemas, massive shopping centres, and large shopping chains.

**Landmarks** – A strong emphasis on landmarks generated ideas like fountains, a Ferris wheel, and roller coasters.

Some suggestions confirmed the findings from previous workshops, including libraries, outdoor cinemas, outdoor gyms, murals and public art, and moving around safely.

Some novel ideas suggested by students include:

- Community gardens and community fruit trees
- Possum houses
- Fenced dog off lead areas including dog a swimming pool
- Petting zoo

“When you think about Medowie, you don’t normally think pretty, but we are here to change that by adding a landmark to Medowie (the Fountain) in a large open space. Mostly because Medowie is very claustrophobic.”

Student – Catherine McAuley Catholic College

Interestingly, playgrounds and skate parks received less attention from the students than may have been expected.

See **Appendix F** for some of the plans created by students.

### **Phase 3 – Check-in survey**

People who attended at least one of the workshops about the Medowie Place Plan had the opportunity to respond to a short survey to confirm the direction of the draft place plan.

A draft concept plan for the town centre expansion site and draft place plan actions were provided for this purpose (August 2022). The survey was completed by 14 people.

The survey showed overall high levels of support for both the draft concept plan (84.6%) and each of the draft actions.

For full details, see **Appendix G**.

# Appendices

**Appendix A:** Liveability Index survey

**Appendix B:** Town Centre survey

**Appendix C:** Workshop 1 (Sept 2021)

**Appendix D:** Workshop 2 (Sept 2021)

**Appendix E:** Workshop 3 (June 2022)

**Appendix F:** Check-In survey (Aug 2022)

**Appendix G:** School workshops (Aug 2022)

# Appendix A - Liveability Index survey



**345**  
responses from  
Medowie and surrounds



**Liveability is simply what a place is like to live in — a liveable place is a healthy place.**  
Liveability is influenced by safety, the natural environment, infrastructure, accessibility, things to do, attractiveness and inclusivity.



## OUR TOP 5 MEDOWIE VALUES

**These are the things most important to Medowie\* residents in their ideal neighbourhood:**

- Elements of natural environment (natural features, views, vegetation, topography, water, wildlife) — 68%
- Locally owned and operated business — 60%
- Sense of neighbourhood safety (from crime, traffic, pollution) — 59%
- General condition of public open space (street trees, footpaths, parks) — 57%
- Local businesses that provide for daily needs (grocery stores, pharmacy, banks) — 56%

In Medowie and surrounding suburbs your ideal neighbourhood has:

- well maintained and managed public domain; footpaths, parks, roads and other public assets
- locally owned and operated businesses that provide the community with their daily needs
- easy to access shared community amenities, like the local shops, on foot or bike.



## OUR STRENGTHS

These are the things you care about most and say are performing well. We must continue to celebrate and protect these.



Local businesses that provide for daily needs (grocery stores, pharmacy, banks)



Sense of personal safety (for all ages, genders, day or night)



Locally owned and operated businesses

## OUR LIVEABILITY PRIORITIES

These are the things most important to you and are underperforming. We must work to improve these.



Evidence of recent public investment (roads, parks, schools)



Quality of public space (footpaths, verges, parks)



Walking/jogging/bike paths that connect housing to communal amenity (shops, parks)



General condition of public open space (street trees, footpaths, parks)



Sense of neighbourhood safety (from crime, traffic, pollution)



Protection of the natural environment



Elements of natural environment (natural features, views, vegetation, topography, water, wildlife)



Things to do in the evening (bars, dining, cinema, live music)



Evidence of Council/government management (signage, street cleaners)



Access and safety of walking, cycling and/or public transport (signage, paths, lighting)



Spaces suitable for play (from toddlers to teens)



Local education opportunities (from elementary to adult education)



Spaces suitable for specific activities or special interests (entertainment, exercise, dog park, BBQs)



Sustainable urban design (water sensitive design, transport-oriented design, building design, density)



Amount of public space (footpaths, verges, parks)



Landmarks, special features or meeting places



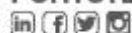
PLACESCORE™



PORT STEPHENS  
COUNCIL

For more information go to

**PORTSTEPHENS.NSW.GOV.AU**



# Appendix B – Town Centre survey



## MAXIMISE YOUR IMPACT

This Impact Maximiser Report helps you increase the impact of your place experience and community values data collected via Place Score's PX Assessment and Care Factor tools. It provides place-specific strengths and weaknesses that can help improve the performance of your mainstreet.

In April 2021, Place Score conducted a PX (Place Experience) Assessment of Ferodale Road (btw Peppertree Rd and Medowie Rd) and a Town Centre Care Factor (CF) survey in Medowie for Port Stephens Council.

Your community identified the mainstreet to be performing well in terms of:

- Grocery and fresh food businesses
- Welcoming to all people
- Car accessibility and parking

On the other hand, the following areas were highlighted as not performing as well:

- Amenities and facilities
- Free and comfortable group seating
- Public art, community art, water or light feature

Please note - In the following sections of the report "Ferodale Road" refers to the section of Ferodale Road between Peppertree Road and Medowie Road.

### ABOUT FERODALE ROAD

Ferodale Road is a two way double lane road which serves as an access to a cluster of eateries and supermarkets. It has a divider towards Medowie Road which slows down the traffic coming in from the highway. There is lush greenery with trees on both sides of the road along with wide footpaths.

To either side are Medowie Community Centre, Woolworths, a park, a large car park and some terrace housing. The road also features a bus stop and public toilets, both located nearby the community centre.

At the time of the assessment, Ferodale Road was mostly used by Woolworths customers as a way to exit the centre and access Medowie Road. There was also limited pedestrian activity along the road, with most users driving into the commercial area.



FERODALE RD, OFFERS A RELATIVELY LOW PLACE EXPERIENCE, WITH A PX SCORE 6 POINTS LOWER THAN THE 2021 NATIONAL BENCHMARK AVERAGE STREET PX OF 66/100.<sup>1</sup>

### PLACE STRENGTHS AND PRIORITIES

Your Strengths and Priorities are determined by aggregating community values against the current performance of your street.

- High CF + High PX Score = Strength
- High CF + Low PX Score = Priority
- Mid to low CF + Low PX Score = For consideration

#### LEGEND

- Strengths (Protect and build upon these attributes)
- Improvement Priorities (Focus on improving these attributes)
- For Consideration (Focus on improving these attributes AFTER all priorities have been addressed)

CF	STRENGTHS
10	Vegetation and natural elements (street trees, planting, water etc.)
6	Welcoming to all people
10	General condition of vegetation, street trees and other planting
3	Sense of safety (for all ages, genders, day/night etc.)
4	Overall look and visual character of the area
CF	IMPROVEMENT PRIORITIES
4	Things to do in the evening (shopping, dining, entertainment etc.)
2	Maintenance of public spaces and street furniture
1	Cleanliness of public space
5	Walking paths that connect to other places
5	Ease of walking around (including crossing the street, moving between destinations)
2	Elements of the natural environment (views, vegetation, topography, water etc.)
CF	FOR CONSIDERATION <sup>2</sup>
10	Local history, heritage buildings or features
10	Outdoor restaurant, cafe and/or bar seating

Notes: 1. National average sample used n=15,116 (April 2021). 2. More considerations can be found on page 8.

PLACESCORE  
©2021



## HOW DOES FERODALE ROAD COMPARE?

Ferodale Road is performing below the National Benchmark average. Its main point of difference is car accessibility and fresh food businesses. Most other aspects of place are either performing similarly or below the national average.

Understanding your strengths and weaknesses compared to the National Benchmark can help you plan to build on your competitive advantage or improve areas that are under-performing.

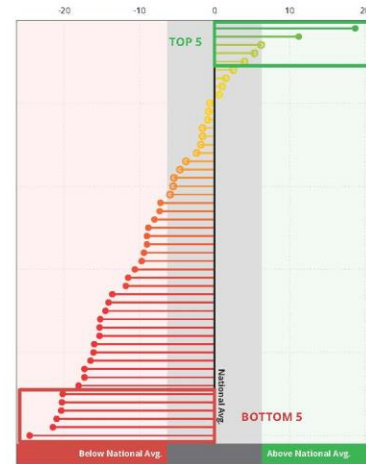
### PX SCORES

66	National
64	Market St, Newcastle
58	Ferodale Rd, Medowie
58	Hunter St, Newcastle
49	Burton St, Vincentia
46	Kinghorne St, Nowra

### BEST AND WORST PERFORMING ATTRIBUTES

TOP 5 ATTRIBUTES COMPARED TO THE NATIONAL AVERAGE	DIFFERENCE FROM NATIONAL AVERAGE
Car accessibility and parking	+18.7%
Grocery and fresh food businesses	+11.2%
Businesses that reflect the local community and values	+6.2%
Vegetation and natural elements (street trees, planting, water etc.)	+5.3%
Evidence of recent public investment (new planting, paving, street furniture etc.)	+4.0%

BOTTOM 5 ATTRIBUTES COMPARED TO THE NATIONAL AVERAGE	DIFFERENCE FROM NATIONAL AVERAGE
Free and comfortable group seating	-24.6%
Street furniture (including benches, bins, lights etc.)	-21.5%
Interesting things to look at (people, shops, views etc.)	-21.0%
Free and comfortable places to sit alone	-20.4%
Amenities and facilities (toilets, water bubblers, parents rooms etc.)	-20.3%



PX score of all 50 attributes of Ferodale Rd compared with Place Score's National Benchmark



Notes: Follow this link to see how all 50 Place Score attributes are performing compared to the National Benchmark average. Each attribute is scored out of 10. The grey area illustrates attributes that are within the margin of error, meaning you should be cautious as they could be lower, higher or the same as the National Benchmark average. National average sample used n=15,116 (April 2021).

Medowie  
Impact Maximiser

3

## ABOUT YOUR DATA

This section includes a summary of your Care Factor survey and Street PX Assessment data. This includes your community's values, the performance of your main street, how it compares to other places in Australia, the strengths and priorities for your mainstreet.

Place Score offers two sophisticated data collection tools, Care Factor (CF) survey and Place Experience (PX) Assessments.

Like a 'place census', Care Factor captures what your community really values, while PX Assessments measure the community's lived place experience. Together they help you identify what is important, how the place is performing, and what the focus of change should be. An attribute with a high CF but a low PX should be a priority for investment as it will have the most positive impact on the most amount of people.

### ABOUT YOUR PLACE SCORE DATA

Two types of Place Score data have been used to develop the recommendations in this report.

Data source	n=
Town Centre Care Factor (CF)	119
Street Place Experience (PX) Assessment	62

### Your Town Centre Care Factor (CF)

- Collected face to face on 23 and 24 April 2021

- 119 respondents; 52 men, 66 women and 1 different identity

### Your Street PX Assessment

- Collected face to face on 23 and 24 April 2021

- 62 respondents; 26 men and 36 women

To support the development of this Impact Maximiser Report Place Score has also considered Google Maps (2021).

## THE FIVE DIMENSIONS OF GREAT PLACES

The 50 Place Score attributes have been defined as a result of extensive investigation of community, academic and commercial research to identify the factors that contribute to place experience. We group them under five key place dimensions.



### LOOK & FUNCTION

The physical characteristics of the area - how it looks and works, its buildings, public space and vegetation



### SENSE OF WELCOME

Whether the place is inviting to a range of people regardless of age, income, gender, ethnicity or interests



### THINGS TO DO

Activities, events and the invitation to spend time in the place that might lead to a smile, a nod or even a new friend



### UNIQUENESS

Things that make the area interesting, special or unique - these could be physical, social, cultural or economic aspects of the place



### CARE

How well the area is managed, maintained and whether improvements are being made - it considers care, pride and both personal and financial investment

4 Medowie  
Impact Maximiser

PLACESCORE  
©2021

## MEDOWIE'S TOP 10 CARE FACTORS

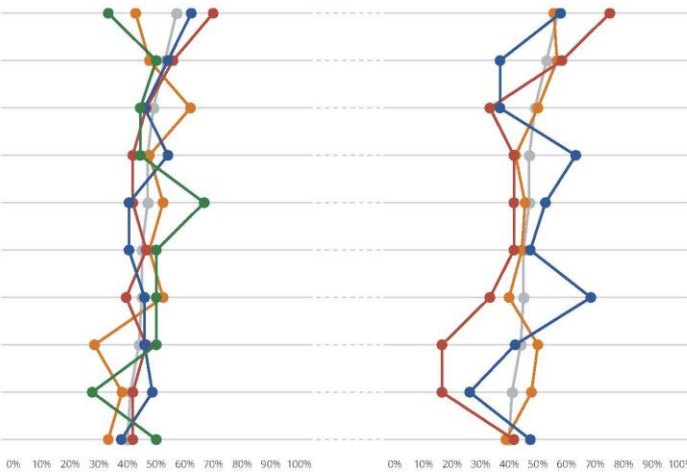
The Medowie community's ideal town centre varies greatly depending on whom you ask, with age and association with the centre significantly impacting values. However, most community members would agree on their ideal town centre featuring natural elements and a great look and feel. The perfect town centre would also be walkable and welcoming to all.



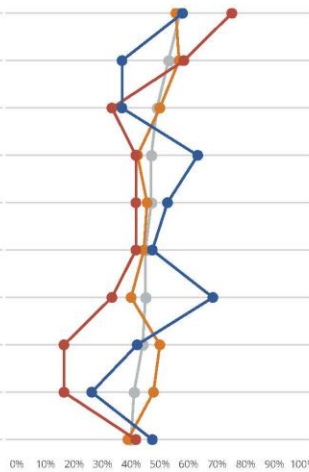
### 2021 TOWN CENTRE CARE FACTOR<sup>1</sup>

RANK	ATTRIBUTE	% OF PEOPLE
#1	Cleanliness of public space	51%
#2	Elements of the natural environment (views, vegetation, topography, water etc.)	51%
#3	Sense of safety (for all ages, genders, day/night etc.)	49%
#4	Overall look and visual character of the area	47%
#4	Things to do in the evening (shopping, dining, entertainment etc.)	47%
#6	Ease of walking around (including crossing the street, moving between destinations)	45%
#6	Welcoming to all people	45%
#8	Maintenance of public spaces and street furniture	44%
#9	Walking paths that connect to other places*	43%
#10	General condition of vegetation, street trees and other planting*	40%

### BY AGE



### BY ASSOCIATION<sup>2</sup>



Notes: 1. Care Factor percentages are based on the percentage of respondents that selected an attribute, the ranking is based on the level of alignment in your community. 2. Respondents could select more than one identity e.g. resident and worker.

Medowie  
Impact Maximiser

5

## FERODALE ROAD PLACE EXPERIENCE

(Between Peppertree Road and Medowie Road), Medowie

Ferodale Road is a two way double lane road which serves as an access to a cluster of eateries and supermarkets. It has a divider towards Medowie Rd which slows down the traffic coming in from the highway. To either side are Medowie Community Centre, Woolworths, a park, terrace housing and a large car park. There is lush greenery with trees on both sides of the road.

### KEY FINDINGS

- 62 people completed an on-site assessment via face-to-face surveys on 23-24 Apr 2021.
- Ferodale Road received a PX score of 58/100.
- The strongest rated attribute is 'Grocery and fresh food businesses'.
- The poorest rated attribute is 'Amenities and facilities'.
- Men rate 'Unique mix or diversity of people in the area' 11% higher than women.
- Women rate 'Service businesses (post offices, libraries, banks etc.)' 14% higher than men.
- 15-24 yrs olds rate 'Shelter/awnings (protection from sun, rain etc.)' 58% higher than 25-44 yrs olds.
- 25-44 yrs olds rate 'General condition of vegetation, street trees and other planting' 13% higher than 65+ yrs olds.
- 65+ yrs olds rate 'Welcoming to all people' 13% higher than 25-44 yrs olds.



### HOW DOES FERODALE RD COMPARE WITH OTHER SIMILAR STREETS?



### NET PROMOTER SCORE (NPS)<sup>2</sup>

How likely is your community to recommend this place?



How did your community respond to the statement...

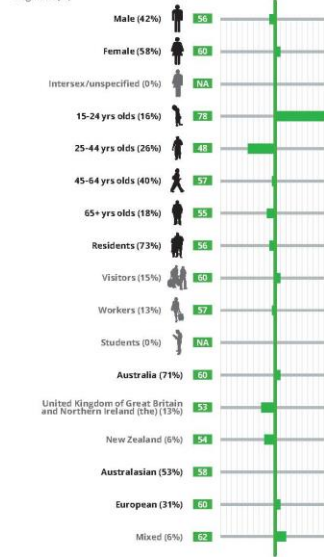
"I care about this place and its future"



### COMMUNITY GROUP PX SCORES

Groups within your community may perceive place experience differently to one another. The following infographic displays the PX Scores for different demographic segments:

Total<sup>1</sup> n=62  
Segment (%)



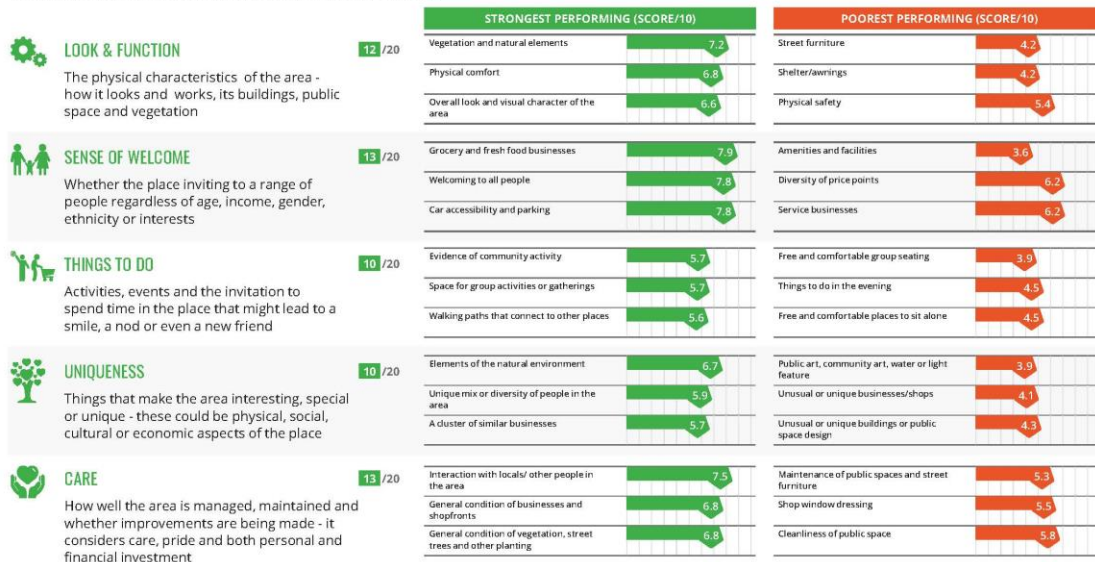
6 Medowie  
Impact Maximiser

Notes: <sup>1</sup>This report only includes 100% completed surveys, respondents could select more than one identity e.g. worker and student. Groups with <10 respondents are represented in grey or italics to indicate a small dataset and results are indicative only. <sup>2</sup>NPS (Net Promoter Score) is a standard tool for measuring respondent loyalty to a brand or entity.

PLACESCORE  
©2021



A town centre's PX Score is a number between 0 and 100 which measures your community's experience of that place. Here we drill down into the individual place attributes which contribute positively and negatively to place experience. The three strongest and poorest attributes under each place dimension are listed. Each attribute score is shown as a number between 0 and 10.



**PLACESCORE** ©2021 Notes: Respondents are asked to rate 50 attributes across 5 dimensions on how they contribute to the respondent's personal enjoyment of the area on a scale 0 = "Fair" and 10 = "Perfect". Respondents can also select "N/A".

Medwies  
Impact Maximiser

## 2020 PRIORITIES FOR FERODALE ROAD

By understanding what the local community values and how it rates your mainstreet, we can preserve what is working well and recommend the areas for impactful investment.

These tables and graph illustrate your town centre strengths, improvement priorities and secondary priorities.

**STRENGTHS** should be celebrated and protected.

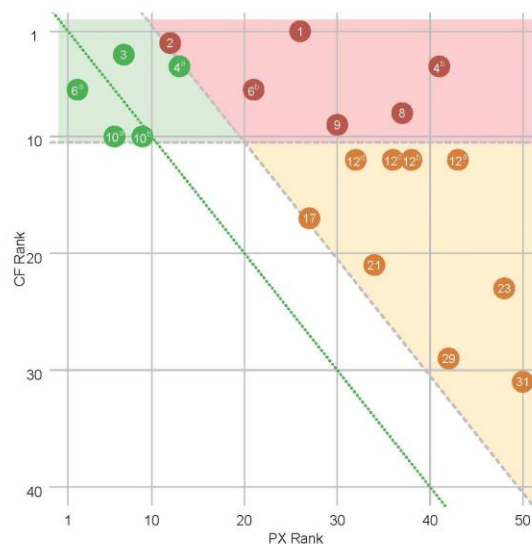
**IMPROVEMENT PRIORITIES** identify the aspects of your town centre that are important to people but are currently under-performing. Improving these attributes will have the most significant impact on your community.

**FOR CONSIDERATION** identify attributes to look-out for, they are negatively affecting your town centre and can become more significant issues if more people start caring about them.

CF STRENGTHS	
10	Vegetation and natural elements (street trees, planting, water etc.)
9	Welcoming to all people
10	General condition of vegetation, street trees and other planting
1	Sense of safety (for all ages, genders, day/night etc.)
12	Overall look and visual character of the area

CF IMPROVEMENT PRIORITIES	
4	Things to do in the evening (shopping, dining, entertainment etc.)
8	Maintenance of public spaces and street furniture
1	Cleanliness of public space
9	Walking paths that connect to other places
9	Ease of walking around (including crossing the street, moving between destinations)
2	Elements of the natural environment (views, vegetation, topography, water etc.)
CF FOR CONSIDERATION	
12	Local history, heritage buildings or features
12	Outdoor restaurant, cafe and/or bar seating
23	Public art, community art, water or light feature
12	Physical safety (paths, cars, lighting etc.)
12	Landmarks, special features or meeting places
31	Amenities and facilities (toilets, water bubblers, parents rooms etc.)
21	Evidence of public events happening here (markets, street entertainers etc.)
29	One of a kind, quirky or unique features
17	A cluster of similar businesses (food, cultural traders, fashion etc.)

**LEGEND**  
 --- Horizontal: Top 10 CF threshold  
 --- Diagonal: Threshold showing attributes whose PX Rank is performing 10 pts worse than its CF Rank\* (PX=CF+10)  
 --- Equal CF rank and PX Score (PX=CF)



8 Medwies Impact Maximiser Notes: CF - Care Factor ranking out of 50 - the lower the number the higher the number of people who think this attribute is important. Strengths have a high CF and high PX. Priorities are the poorest performing CF ranked in the overall top 10. For Consideration are the worst performing overall outside of the Top 10 CF. 1. A threshold difference of 10 pts between the CF rank and PX rating is used to assure that displayed priorities are not within the margin of error.

**PLACESCORE** ©2021

PLACE SCORE

LEVEL 5, SUITE 1-2, 2-12 FOVEAUX  
STREET, SURRY HILLS, NSW, 2010,  
AUSTRALIA

PLACESCORE.ORG

ABN 19 610 823 286

T: +61 2 8021 7027

TEMPLATE V.0.74



## Appendix C - Workshop 1 (Sept 2021)

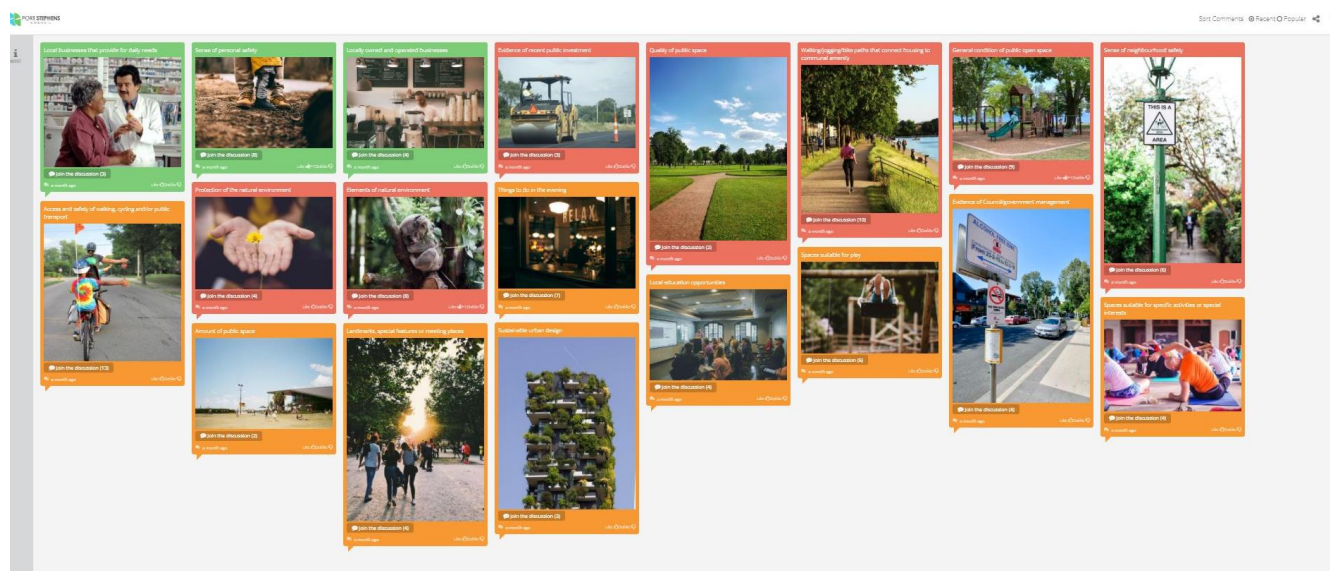
Workshop 1 was held with local residents, businesses and representatives from community groups and organisations to set priorities and a vision for Medowie. The results of the Liveability Index (**Appendix A**) were the starting point for discussion. The following activities were undertaken.

### Activity: What is your place plan?

Online engagement tool (Miro) was used to help create a fun and engaging workshop activity designed to build confidence in the online environment.

### Activity: Testing the Liveability Index values for Medowie

Online engagement tool, Social pinpoint, was used to help capture and focus a 'deep dive' into the Liveability Index findings for Medowie. The exercise was designed to explore what the attributes mean to different people.



The following table is a summary of the activity. There were 104 comments received.

It should be noted that many of the participant comments were adjusted and uplifted to focus on the broader attribute, rather than on specifics. For example, if someone had commented, 'More rubbish bins – especially before Maccas opens' this has been uplifted to 'Well maintained public spaces with more seating and no rubbish'. This process ensures similar comments are grouped and key priorities are more easily highlighted.

It should also be noted that some of the Liveability attributes are very similar – these have been aligned into the following table to best highlight the similar attributes and comments and are not in the order of priorities as presented in the Liveability Index data findings for Medowie in 2020 (see **Appendix A**).



Some of the key findings are:

- Create more safe pathways and better connections for pedestrians and cyclists between neighbourhoods and to surrounding areas.
- Create additional or improved public recreation spaces for all ages and abilities.
- Improve and utilise opportunities for bushwalking and mountain biking.
- Investigate opportunities for a new quality public place, like a town square, for people to meet.
- More opportunities for outdoor music or entertainment like a festival.
- Make outdoor spaces more attractive and convenient with additional seating, lighting, public art, and signage.

Type	Liveability attribute	What does this mean to me? Why is it important to me?	Comment count
STRENGTHS	Local business that provides for daily needs	Everyday shopping/grocery needs are met however more shopping and/or service options would generally be welcomed	5
	Locally owned and operated businesses	Support unique local business in Medowie esp. based in food production	3
	Sense of personal safety	Need adequate street lights and pathing to access facilities	2
		Comfortable with personal safety in Medowie	1
HIGH PRIORITIES	Sense of neighbourhood safety	Better street and path lighting and use of CCTV	5
		Knowing who your neighbours are	1
	General condition of public open space	Well maintained public spaces with more seating and no rubbish	6
		More park equipment options to suit various users ie., young children or those who would like exercise and relaxation	4
	Quality of public space	Seating and outdoor gym equipment along Medowie Road shared paths to make one long park	6
		Activation of existing areas i.e. Park Run	1
	Evidence of recent public investment	Quality installations required	1
		Improved entrance to Medowie at Richardson Road roundabout, suburb signage and consider public art element	3
	Protection of the natural environment	Wildlife is in decline whilst feral animals are increasing including domestic cats	3
		More expectation on developers to provide green spaces and retain natural bushland where possible	2
		More environmental education opportunities (including waste, Landcare, Ngioka model)	3
	Elements of the natural environment	Nearby bushland (Hunter Water/State Forest) to be able to be used for bushwalking and mountain biking	3
		Medowie means place of tall trees and should be kept as such	1

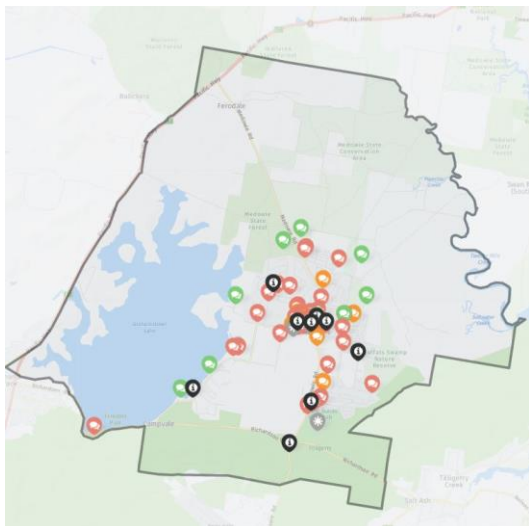


Type	Liveability attribute	What does this mean to me? Why is it important to me?	Comment count
SECONDARY PRIORITIES	Walking/jogging/bike paths that connect housing to communal amenity	New and improved pathways are needed to provide safe connection between nearby suburbs and key features i.e. Medowie to RAAF base; Medowie to Raymond Terrace along Richardson Road, Medowie to Fern Bay and Stockton; and between schools, shops and housing.	14
	Access and safety of walking, cycling and/or public transport	School children (Wirrenda) and pre-school (Kindlebark) unable to walk to and from school safely	4
		More bus shelters and more direct bus connections – getting to the University can take 2-3 hours	3
		Pedestrian crossings across Ferodale and Medowie Roads	2
		Improved safety of parking options at Wirreanda and Grahamstown Dam walk	2
		Trucks along Medowie Road should use the highway not Medowie Road as a short cut	1
	Evidence of Council/government management	More frequent mowing of nature strips and laneways	2
		More kerbing to remove open drains	1
		Better response to maintenance requests	1
	Things to do in the evening	Live outdoor music or entertainment opportunities e.g. outdoor cinema or festival	4
		More takeaway food options	1
		General comment regarding tension between ‘things to do’ and potential future development	1
	Spaces suitable for specific activities or special interests	Family activity options to include teenagers such as swimming pool, cinema, bowling alley, regular events	3
		Retiree activities i.e. Men’s shed, senior programs	2
		More family support or adult education program opportunities i.e. WEA, My Time support	1
	Spaces suitable for play	Potential access to Grahamstown Dam for kayaking and non motorised water sports	1
		Fenced playground	1
		Upgrade to Finnan Park (HWC) to include disability friendly equipment	1
	Local education options	Public high school required	2
	Sustainable urban design	Ensure future developments meets environmental goals	1
		Better future planning of paths are required for future developments	2
	Amount of public space	Lack of public space.	2

Type	Liveability attribute	What does this mean to me? Why is it important to me?	Comment count
	Landmarks, special features of meeting places	Town square for teenagers to 'hang out' – mobile phone charging options	2

## Activity: 'Mapping your priorities'

This exercise focused on people mapping specific areas to a liveability priority.



There were 69 responses received and some of the key themes are as follows:

- Lack of safe pathways connections with 30 related comments.
- Additional/enhance existing public recreation spaces and opportunities including bushwalking and mountain biking opportunities with 23 related comments.
- No town square or quality central place for people to meet and/or community space in general with 8 related comments.

The full overview of comments and suggestions is included in the tables below.

Theme 1: Lack of safe pathways connections (30 comments)		
#	Comment	Pin type
<b>Priority Medowie Road path completion</b>		
1	Think the path [Medowie Road] is great and can't wait for this little missing link [Silverwattle to Ferodale] to be completed.	Celebrate and protect
2	Safety for walking - not enough lighting, whole length of Medowie Road.	High Priority
3	Glad to hear this is happening!	Information
4	Pedestrian crossing required. Footpaths are great but nothing to connect them from where they end on one side of the street and where they start on the other side of the street.	High Priority

Theme 1: Lack of safe pathways connections (30 comments)		
#	Comment	Pin type
5	They are currently extending the shared path from Ferodale to Silverwattle Drive, reducing the amount of crossings	High Priority
6	Lack of safe footpaths – Priority between Ferodale and Medowie Road	High Priority
<b>Priority around schools</b>		
7	Footpaths connections to school [Wirreanda]	High Priority
8	Fix up this area [Wirreanda] to make parking for the school - making it safer for children with ride to school initiatives - to also include space for people with a disability to park. People are being injured due to looseness of the gravel. Needs a whole approach.	High Priority
9	There is no footpath or safe walking area through this stretch. I often see pedestrians come off the Medowie Road new pathway and turn onto Brocklesbury Rd and just walk on the street. Due to the proximity to the main road it is a particularly dangerous section of road for pedestrians. This section of road also connects to the public school and due to the lack of pathway forces children to ride all the way to Ferodale road to get to Wirreanda or risk it taking the shorter route.	High Priority
10	Pathway connections between Medowie Public School and Christian School to be improved.	High Priority
11	Terrifying along Abundance Road with kids walking from Medowie public school. Needs pathway along here.	High Priority
12	Also terrifying along here for school children [Kirrang and Wilga Rd] pathway improvements and pathway connections between Medowie Public School and Christian School to be improved.	High Priority
13	No footpath [Kirrang Drive] connecting to the school [Medowie Public] Better connection for all schools with pathways. Also connect sporting fields to school	High Priority
14	Extend existing pathway along Waropara Road in this section between Christian School and Kula Road.	High Priority
15	I wonder if a short term solution could be an on-road bike lane separated with a barrier similar to the new lane on Hunter St Newcastle?	High Priority
<b>Priority around town centre connectedness</b>		
16	Footpath connections from residential to town centre- lack of: conflict between pedestrians and cars	High Priority
17	Town centre/walking paths/parks- rubbish	High Priority
18	A pedestrian crossing somewhere along Ferodale Road would be great. It's a very busy road and is difficult to cross safely.	High Priority
19	Rethink this whole commercial area. Complete dogs breakfast at present. Start with a centre, incorporate pedestrian areas and green space. Radiate connectivity from here so people can access without driving. green space trails to avoid roads and link the N/S/W/E of Medowie	High Priority

Theme 1: Lack of safe pathways connections (30 comments)		
#	Comment	Pin type
20	Agreed. If you want to park at woolies (generally the place where you would buy the most items) it is not safe or convenient to get to the post office or chemist or even the butcher. Need to prioritise safe pedestrian access	High Priority
21	Consider a walking pathway that takes people through the bush area to the town centre. A walk through designated green corridor rather than all pathways and recreation on a busy road	Med. priority
22	Adding to others comments about pathing - we need to create footpaths or shared paths along bus routes to alleviate conflicts between pedestrians and transport and connect housing to the shared path infrastructure Council has provided. In particular, areas where the school buses travel. Picture of bus routes included.	High Priority
23	Dangerous at the sporting fields, Ditch should be a footpath. Cars parked here - often bogged and need to be pulled out. Lots of cars and existing parking at oval is not sufficient. Dangerous with kids.	High Priority
24	Connections to soccer/ Medowie social/ school	High Priority
<b>Priority around connection to other suburbs/areas</b>		
25	Link Medowie Road path to the RAAF base / Airport	High Priority
26	Bike connection to airport via RAAF base is missing.	Med. Priority
27	Consideration even to link further with those that commute to work into Newcastle. Newcastle/Lake Mac have FAR FAR superior safe cycleways and connectivity to public transport. Need to have a safe cycle access to Fern Bay, where city of Newcastle have provided safe access to the ferry wharf	High Priority
<b>Other</b>		
28	The pathway should connect to the town center to allow cyclist, runners and walkers to be able to travel to Finnan Park	High Priority
29	The pathway already connects to the town center (Fairlands then Ferodale - more important pathing required elsewhere)	High Priority
30	This is a dangerous location [South Street/Boyd Blvd] given the speed of the traffic, lack of lighting, a makeshift gutter and often sodden soil. Walking the dogs around this corner or riding bikes is dangerous. There is no safe place to walk on the edge of the road when turning up Boyd ave. Cars come from both directions at a higher speed because of the rural setting of the properties to the north. When walking the South street / James Road / Medowie road loop this is the most dangerous corner.	High Priority



## Theme 2: More/enhance existing public recreation areas including unlocking bushwalking/mountain biking opportunities (23 comments)

#	Comment	Pin type
<b>Unlocking bushwalking/mountain biking opportunities</b>		
1	Preserve/ protect natural area- bike riding, bushwalking opportunities	Celebrate and protect
2	Wonderful bushwalks are present all across Medowie and these natural beauties' should always be celebrated	Celebrate and protect
3	Fantastic walking/riding trails that are currently an offence to use. Can we consult with Hunter water and allow the community access on specific marked trails and de-criminalise enjoying nature. Can create a 10km/5km/2km trail with minimal effort.	Celebrate and protect
4	The Medowie State Conservation Area and Medowie Nature Reserve are part of NSW National Parks and Wildlife Service. Could we formalise tracks, add signage and enhance the experience for locals and visitors alike (similar to Tilligerry Habitat)? What are we conserving? Are there points of interest?	Celebrate and protect
5	Transmission Line Trail should be not gated and opened up for runners, and bushwalkers, Great walk up to Daniel James trial and showcases Medowie's natural beauty	High Priority
6	Create a nature trail through bushland	High Priority
<b>Enhancing existing organised sport / public recreation areas</b>		
7	Consider a skate park redesign and seek input from the local kids. Get them to design a park with bowls etc. similar to that in Raymond Terrace or near Mereweather Beach in Newcastle. There are heaps of great young artists in town that could create some amazing murals if encouraged and supported by council	High Priority
8	Medium Priority – Skate park is not a quality place, it's messy and not a good place for younger children. Offering better place for teenagers to hang out may allow better use of the skate park area for younger kids as it is currently a safety issue for them (feeling unsafe).	Medium priority
9	Upgrade Ferodale Oval Amenities and provide second oval for cricket and AFL.	Med. priority
10	Upgrade amenities for Yulong Oval	Med. priority
11	Rarely see this great facility open? [Grahamstown Aquatic Club] can we make it more accessible for kite surfers/windsurfers as well as sailing.	Celebrate and protect
12	Expand the current BMX bike track	Celebrate and protect
13	Park run location? [Pacific Dunes]	Other
14	Coolabah reserve- protect, maintain this area	High Priority

## Theme 2: More/enhance existing public recreation areas including unlocking bushwalking/mountain biking opportunities (23 comments)

#	Comment	Pin type
15	Retaining wall and Path coming from Coolabah Rd damaged.	High Priority
16	Coolabah reserve	Celebrate and protect
<b>Enhancing existing passive recreation / walking areas</b>		
17	Formalised car parking for access to dam walk.	High Priority
18	Great connection to Raymond Terrace. Would like to see workout stations along this section of path from Fairlands to the Sailing club. This would be a great feature and enhance the path to become a fitness trail. Addition of 1-3 water stations along here would also be a benefit (Join the party Hunter Water?)	Celebrate and protect
19	Toilet at beginning of shared pathway (across the road from Kedahla Close). Toilets are provided at Finnan Park (Hunter Water Corporation), but it is very dangerous crossing Richardson Road from the shared path to access them.	High Priority
20	like to see exercise work stations along the Lisadell/Grahamstown road section of the footpath toward the sailing club	Medium priority
21	Fantastic pathways have been installed from the Bower Estate all the way to Catherine McAuley Catholic College. I think it's worth considering placing some bins along the path at few points. Many afternoons the pathway is packed with people walking, riding and running up and down Medowie road and it will only get busier when the connection to the catholic college is complete. It's a beautiful path to keep this path spotless and to celebrate it I advise we install some garbage bins.	Medium priority
22	Lighting along this path would be a great asset especially in the winter months when people are exercising after dark.	Medium priority
23	Need to incorporate fitness stations within residential areas of Medowie to promote health and wellbeing - installation of exercise equipment in various parks connected by walkways/ pathways to create a 'fitness trail'	Medium priority

### Theme 3: No town square or quality central place for people to meet and/or community space in general (8 comments)

	Comment	Pin type
1	Public space quality - no place that is safe, close to business. connected to central area, school. No town square in the town centre. Can create a better place for teenager to be. Skatepark is not a quality place. messy. Nowhere else to go for teenager.	High Priority
2	Quality public space for teenager. High tech benches, solar. Connect to these public spaces (bike paths)!	High Priority
3	Public Space - Missing town Square and facilities to accommodate a growing community. Well connected to the rest of medowie.	High Priority
4	Creating a centre will give Medowie a starting point from where connections radiate from. The town is a hotchpotch of commercial development. A centre with a pedestrianised area/green space/memorial etc would bring the commercial area together.	High Priority
5	There is a hut / shed in the bush here used by the kids as a place to engage in antisocial behaviours such as drug use. May be worth having a look to see what's going on there and what options can be provided for teens if this is the best thing in town	High Priority
6	Link [shopping centre] better with education opportunities.	Med. priority
7	Mens shed and community veggie garden location? [Near Medowie Community Centre]	Other
8	Medowie country music festival location? [Medowie social]	Other

### Theme 4: Other (6 comments)

	Comment	Pin type
<b>Road improvements</b>		
1	There should be turning lane for the Bower estate when come from the highway, its dangerous with cars to slow up and turn with cars following behind having just gone from 100km/hr to 80km/hr (Apologises for photo google maps hasn't been updated)	High Priority
2	Traffic island - many people turning right into Boundary Rd (from Medowie Rd), cut across and end up on the incorrect (right) side of the street. Many Bower estate residents have almost had collisions whilst leaving the estate because of people entering it.	High Priority
3	Seal the whole of Ferodale Road, rethink this intersection [Ferodale and Fairlands) and traffic priority	High Priority
<b>Other</b>		
4	Mobile reception is appalling - not sure if there is anything Council could do to help here	High Priority
5	<b>Time for our own Police station?</b>	<b>High Priority</b>

### Activity: 'Vision for Medowie in 10 years' time'

Participants were asked to provide three words to describe their vision for Medowie in 10 years' time. The following word cloud resulted (the larger the font the more times the word was used by participants):



### Activity: Local case study – Continue momentum from the 7 Day Makeover

A case study using online break out rooms was used to discuss ways to continue momentum from the 7 Day Makeover, with the view that creating great places can benefit business and community and doesn't necessarily mean at great cost.

Some of the key ideas included

- Extend 7 Day Makeover main features throughout town i.e. 'gum leaves' along new shared path together with seating
- Lights in trees at Community centre
- Town centre map
- Pedestrian crossing across Ferodale Road
- More mountain bike/walking trails to suit young people and family activity

### Activity: Quick Wins, Big Picture

At the conclusion of Workshop 1 participants were asked to undertake a home work exercise which would feed into the activities for Workshop 2. This activity centred around people detailing their quick win and big picture ideas. These were presented as part of the presentation for Workshop 2 as follows:



## **Quick wins**

- Street library in Bower playground
- Garden clean up
- Walk and bike trails map
- Small and large dog parks
- Food truck nights
- Local park run
- Nature trails through state forest
- Shade along new Medowie Road path
- Lining bike paths where footpaths aren't available
- Maintain existing fire trails
- Workout stations along the path to the Dam

## **Big picture**

- Run a farmers market
- More shared pathways
- Water play splash park at Finnan Park
- Unpowered watercraft activities expanded on Grahamstown Dam
- Bins, seating and shade along new Medowie Road pathway
- Develop a Men's shed
- Upgrade trails from Moffatts Swamp to Oyster Cove
- Develop a community garden

## Appendix D - Workshop 2 (Sept 2021)

Workshop 2 attendees produced a series of Action Plans based on quick win and big picture ideas:

QUICK WIN 1: Run food truck nights	
What do we already have to work with?	<p>Monthly market around Bull'n'Bush</p> <p>Existing food truck event at the Bower</p> <p>Teddy Bear's picnic fundraiser</p> <p>AFL Field has water, power and toilets available</p>
What's the situation?	<p>Businesses can benefit from extra people in the town centre</p> <p>New toilets in town centre park should have power available</p> <p>Community centre can be used stall holders to complement event</p>
What does success look like?	<p>Event should be welcoming to residents and community members</p> <p>Opportunity for fund raising for community projects (tie in with 'leaf' stickers)</p> <p>Pleasant night time environment (fairy lights etc)</p> <p>Appropriate timing (not when other large events are on)</p>
Who needs to be involved and what is their role	<p>Business owners – to enable use of their car parking</p> <p>Land developers</p> <p>Guides and Scouts groups (car wash fundraising / can collection)</p> <p>Business owners (sponsorship opportunity)</p> <p>Volunteers</p>
What might stop this happening?	<p>Lack of toilets</p> <p>Lack of room</p> <p>Lack of parking</p> <p>Availability of power and water</p> <p>Ability to attract enough food trucks</p>

Three key actions to make it happen	<ol style="list-style-type: none"> <li>1. Council approval and backing</li> <li>2. Schedule it at the right time</li> <li>3. A facilitator or group/team to lead the event.</li> </ol>
<b>QUICK WIN 2: Implement a local park run</b>	
What do we already have to work with?	<p>Existing runners or interested parties – gyms to assist; Little Athletics group</p> <p>Local café sponsor – support for event and for participants and business</p> <p>Existing Park Run Australia network see website link <a href="https://www.parkrun.com.au/">https://www.parkrun.com.au/</a></p>
What's the situation?	<p>Where would the park run go – needs to go for 5km.</p> <p>The run around the dam would work? Safety of track – pedestrian track.</p> <p>No crossing of roads.</p> <p>Bushland track – space for car parking?</p>
What does success look like?	Would be having a park run
Who needs to be involved and what is their role	<p>Land owner approval</p> <p>Community action group – volunteers for the actual park run – set up flags, timers etc</p>
What might stop this happening?	Lack of suitable land; major roads; difficulties with insurance; lack of community support; COVID
Three key actions to make it happen	<ol style="list-style-type: none"> <li>1. Find the right person/team to lead the event</li> <li>2. Find the appropriate location that meets all the requirements, safety , access, permissions</li> <li>3. Get approval from Parkrun Australia, promotion to potential users</li> </ol>
<b>QUICK WIN 3: Street Library in Bower Playground</b>	
What do we already have to work with?	7 day makeover included a street library – look at what works and doesn't work for this one Bower Playground
What's the situation?	<p>Bower Playground is a little removed so the location is helpful</p> <p>Connection to Bower Playground is good</p> <p>Playground will have toilets and car parking</p> <p>Enough room for the library to be included</p>

What does success look like?	<p>Would motivate kids to ride to Bower Playground to access the library</p> <p>People are using it to take books away but also while they are there</p> <p>Good circulation of books</p> <p>Preschool nearby and could be a partnership</p>
Who needs to be involved and what is their role	<p>Parents with kids to help facilitate</p> <p>Facebook group for people that live in Bower</p> <p>Men shed to build the structure</p> <p>Business donations from materials</p> <p>Council could assist with funding if a group was to facilitate</p>
What might stop this happening?	<p>Vandalism – make it vandal proof – Perspex rather than glass</p> <p>Content might not be an issue so someone should monitor</p> <p>No one wants to do the project but unlikely</p>
Three key actions to make it happen	<ol style="list-style-type: none"> <li>1. Identify the leading group/person – possibly 7 day makeover group rep</li> <li>2. Sourcing community feedback on the project</li> <li>3. Researching other successful street libraries</li> <li>4. Sourcing of building materials</li> <li>5. Approvals to build on the land</li> <li>6. Identify a content manager/librarian</li> </ol>
<b>QUICK WIN 4: Shade trees along new Medowie Road pathway</b>	
What do we already have to work with?	<p>Brocklesby Road is a good example. Planting like this would work; going to the Bower has taller trees</p> <p>Nursery at Shoal Bay (Council run – Ngioka) can assist with appropriate planning.</p> <p>Volunteers could contribute.</p> <p>Create a visual barrier between the existing pathway and the road. Need some 'middle growth/scrubs, not just trees.</p>



	<p>Garden beds work well, compare western shoreline at Stockton and garden projects at Kindlebark Oval Medowie.</p> <p>Brocklesby Road is a good example. Planting like this would work; going to the Bower has taller trees</p>
What's the situation?	<p>Brand new path, but the southern end still has lots of road works. No trees, barren.</p> <p>Leaves and sticks create hazard for kids scooters and skateboards. Gumtrees are a problem.</p> <p>High speed traffic and lack of lighting for pedestrians. Car lights make it difficult to see.</p>
What does success look like?	<p>Looks less new/sparse. Will look more Medowie like.</p> <p>Will bring more wildlife with lower bushes.</p> <p>Filtering car lights. Solar lights would add to the look and feel and provide safety.</p> <p>It will be more pleasant to walk there. Higher use rate of people.</p> <p>Drink water station along the path, rubbish bins, and a place to sit and rest (sandstone blocks like in town centre. Convenience.</p> <p>The path to continue to the RAAF base to the south.</p>
Who needs to be involved and what is their role	<p>Council, Ngioka Centre (nursery).</p> <p>Council - Regular sweeping of the path to keep it clean and safe.</p> <p>Volunteers to install. Garden groups, landcare groups, scouts.</p> <p>Could be a 7 day makeover project? i.e seating, garden beds etc.</p> <p>Could this be a school project? Like a Tree Planning Day, garden beds etc.</p> <p>Schools would be happy to be involved</p>
What might stop this happening?	<p>Lack of funding, although it is not expected to be too expensive (gardens, limestone blocks).</p>
Three key actions to make it happen	<ol style="list-style-type: none"> <li>1. Just do it!</li> <li>2. Get key stakeholders together.</li> <li>3. Get nursery ready to start. Pick the right trees.</li> </ol>

### BIG PICTURE 1: Promote the community garden

What do we already have to work with?	Community garden on Waropara Rd
What's the situation?	Owned by Medowie Christian College Run by a separate group Publically available – need to coordinate with group running the garden Facebook page for the community garden
What does success look like?	Potential for additional garden(s) – shared knowledge in running new gardens
Who needs to be involved and what is their role?	Community garden running group Council available of land (new sites) Facebook group – Medowie Permies. Could be linked with new or existing gardens Residents Council / Businesses / Farmers – materials, manure, soil, plants etc
What might stop this happening?	Nil.
Three key actions to make it happen	Obtain materials from sponsors – start with local businesses Advertising signage (Council approvals etc.) Access to Medowie Tidy Towns materials etc.

### BIG PICTURE 2: Develop a Regional Play Space

What do we already have to work with?	Have previously held a Christmas Carnival experience on the AFL grounds/Medowie Social land  Potential use of existing car park space behind Medowie hall – which is only for overflow for community centre – often used for burnouts and other anti-social behaviour  Also, space for land behind Coles for regional play space? Use of 'paper roads' in Medowie strategy to connect to regional play space' See link to Medowie Strategy on Council's website here <a href="https://www.portstephens.nsw.gov.au/grow/local-area-planning-strategies/medowie-strategy">https://www.portstephens.nsw.gov.au/grow/local-area-planning-strategies/medowie-strategy</a>  Other locations not discussed?
---------------------------------------	--

What's the situation?	<p>Would solve a lot of problems already identified around meeting places.</p> <p>Medowie doesn't have anything like Speers Point park; Maitland Park – it would be great to have something of this calibre (but would cost \$\$)</p> <p>Some kind of permanent stage and seating potential includes previous discussion around Rotunda</p>
What does success look like?	Would be a long time to deliver – and launch event would need to be huge!
Who needs to be involved and what is their role?	Everybody would need to be involved - would need master planning!
What might stop this happening?	Risk of delivery – is related to funding availability
Three key actions to make it happen	<ol style="list-style-type: none"> <li>1. Would need some suitable space allocated to allow this to happen.</li> <li>2. Would need consultation around what it would look like – supersized like Speers Point, Maitland or smaller</li> <li>3. Masterplan</li> </ol>
<b>BIG PICTURE 3: More shared paths around Medowie</b>	
What do we already have to work with?	<p>Key connections are already in place (e.g. new Medowie Road pathway)</p> <p>Port Stephens Pathway Plan to review and prioritise from there</p>
What's the situation?	Key pathways are there but there is no connections.
What does success look like?	<p>Pathways joined from key connections to make the it easy to ride and not needing to drive with bike to shared pathway</p> <p>Interim measure to facilitate joining of pathways such as on road lined pathways (cycleways) where safety isn't a concern.</p>
Who needs to be involved and what is their role?	Council for funding and construction, community for input
What might stop this happening?	Funding as pathways are expensive

Three key actions to make it happen	<p>Port Stephens Pathway Plan to review and prioritise from there</p> <p>Talking to community to confirm priorities</p> <p>Community to work with Council to lobby external funding</p>
<b>BIG PICTURE 4: Run a farmers market</b>	
What do we already have to work with?	<p>Monthly markets already being held in front of Bull &amp; Bush (private land).</p> <p>Town centre feels really alive when it is on!</p> <p>Food truck event held occasionally.</p>
What's the situation?	<p>Lack of parking at the moment and unsafe situations for young kids with cars driving in and out.</p> <p>Current location is very visible which is very important.</p> <p>You can combine the market with a visit to town centre business as well. This benefits the businesses.</p> <p>Location of markets:</p> <ul style="list-style-type: none"> <li>- Parking solution - perhaps moving market to Medowie social? Boyd Oval has sufficient parking and could be good location.</li> <li>- Moving markets elsewhere than Bull &amp; Bush will take business away from shopping centre. The combination &amp; proximity of markets + shops is important for business and customers.</li> </ul>
What does success look like?	<p>Activated town square for the markets.</p> <p>Strong social opportunities, meet and greet, be connected with your community, friends, and family.</p> <p>Music adds to the atmosphere of the markets.</p> <p>The market offers opportunity for additional activities.</p> <p>The markets are connected to other places and it is easy to move between (markets, skate, Medowie social, new rotunda for music).</p> <p>Location: the combination &amp; proximity of markets + shops is important for business and customers.</p> <p>Maybe just rebrand the current markets? Use these to add other elements like music, food vans.</p>
Who needs to be involved and what is their role?	<p>Town centre Businesses</p> <p>Current market organisers and market stall holders.</p>



What might stop this happening?	Nil.
Three key actions to make it happen	<ol style="list-style-type: none"> <li>1. Start talking with organisations that are already doing it (current markets, food trucks).</li> <li>2. Permanent advertising (sign) to create awareness (not just leading up to the day). Also use Facebook.</li> <li>3. Provide supporting infrastructure like water, power, and waste.</li> </ol>

## Appendix E - Workshop 3 (June 2022)

Two community workshops considered the town centre expansion site at 38 Ferodale Road, Medowie. These workshops focused on how the new site can fulfil the community aspirations and priorities for improving the Medowie town centre.

Major themes considered were Community and Recreation, Movement and Place, and the Town Centre expansion site. Below an overview of the suggestion made by workshop attendees.

### 1. Community and Recreation

#### Look and feel

- Reflect the Place of Tall Trees theme
- Reflect the Medowie 7 Day Makeover theme - natural look and feel with timber and sandstone.
- Consider seasonal colours.
- No concrete or hard surfaces.
- Classier open spaces to complement future cafes and restaurants in a future commercial space.
- Use sustainable materials

#### Shade

- Provide sufficient shade and reflect the Place of Tall Trees theme
- Use a combination of trees (plants and trees native to the area, well maintained), shelters (hard covers not shade sails, arbours, made of natural materials like timber and sandstone)
- Integrate infrastructure and street furniture with trees and natural space.
- 2-sided shade structures (wind protection)

#### Furniture

- Practical seating//supportive; no sunlounge chairs
- Locked garbage bins/cabinets
- Public toilets - accommodate women's needs
- Covered picnic tables
- Something a bit different like chairs that have pushbike repair kits attached, furniture that can be moved around, solar charging points for phone charging and bird hives (nest boxes).
- Moveable furniture that can be moved around
- Include power for multiuse

## **Play elements (see also under Miscellaneous)**

- Bike/scooter circuit, also suitable for little kids
- BMX pump, track with asphalt surface
- Something like Bare Creek Bike Park in Sydney: the park features 1.6km of downhill bike trails, flow trails, skills and dirt jump areas, a pump track, walking trails, a dedicated access road, as well as toilets, drinking fountains, bike maintenance stations
- Consider examples like Boomerang Park and Maitland Park with open areas, fenced play area for kids (especially next to road), where you can ride a bike and with footpaths around the park
- Create opportunity for teenagers to ride their bikes (push and motor) somewhere away from the town centre. Include shaded areas
- Playground positioned back from the road
- Centrally located so parents can supervise on one spot
- Talk to young people about design of play spaces
- Flying fox, climbing wall, tree tops equipment
- Tree based play concept e.g. Tree houses, ropes between trees, tree tops equipment, flying fox, slide coming down
- Fountain splash pad for little kids
- Range of ages for children for play
- Playground close to coffee shop/café
- Fenced playground like at Maitland Park
- Hedge maze
- Big kids playground - natural looking obstacle course circuit with things like railway sleepers etc
- Big boulders to enable people/kids to climb over rocks
- Climb on rocks and wander through gardens

## **Skate Park**

- Playground/skate park receives polarised views across participants of the workshops: large skate park or a smaller park with a mix of other uses and facilities
- Existing skate park not in a great location that should be central in the community and collocate with playground, furniture etc
- Flat surface, bowls, rails etc
- Medowie Skate and Scoot - high proportion of young people - 680 signatures on petition
- Purpose built skate park with flats, fun box, and half pipes. Connectivity is important and needs passive surveillance so it does not attract unwanted activities. Should be twice the size of Stockton Skate Park, with covered seating, a cafe, and opportunity for birthday parties
- Co-locate skate and play so parents can grandparents can have eyes on both of the kids
- Relocate skate park to new site
- Skate park needs lighting

- Stockton example - combination of skate park element & adjacent to playground/play space (but separated)
- Lighting for a skate park to be dim normally and button push for brighter use lighting at night
- Not supportive of skate park as don't want to take up a new space with the skate park
- Playground: either a large skate park or a smaller park with a mix of other uses and facilities
- Can the existing ovals accommodate a skate park so it does not have to be on the new town site?
- No big skate park on the new town centre site
- Expand the park and include a young children skate park

### **Access and accessibility**

- Accessibility to be considered
- Make access pathways wide enough for accessibility, prams etc
- All abilities
- Connecting key facilities
- Public transport stop
- Needs to be for everyone, use at different times etc.
- Wide shared walkways (prams, walk, bikes etc.)
- Make the toilets more accessible

### **Parking**

- Provide sufficient parking
- Parking to be located close to picnic areas
- Rear to curb for safety of unloading kids & 'stuff'
- Rear to curb parking on both sides, and expand at the community centre to wrap around the block to connect the two blocks
- Rear to kerb parking for unloading kids
- Children areas away from parking
- Provide bike parking
- Car parking that can also cater for mobile vans for service delivery, like breast screening, library services, blood tests etc.
- Parking set back from recreation space areas with connecting pathways, like Stockton Park

### **Lighting**

- Light up trees
- Main path lighting
- Solar panel that lights up in the night (interactive lighting)
- People will move through at night when area is lit up
- Use solar lighting
- Lighting needs to be highly elevated
- Security lighting



- Decorative lighting - can dress up at Christmas time etc
- Skate park needs lighting

### **Existing community centre**

- Incorporate library, outdoor stage, presentation area
- Library - new branch/media/public Wi-Fi - sub-par internet
- Renovate and paint outside of the Community Centre
- Community Centre is location for the mobile library and provides for a range of other community services – would be good to provide options for them to take their services (which?) outside, but need to be able to do this safely and efficiently

### **Miscellaneous**

- Water/pond
- Rope bridge or something to cross the creek to Medowie Social
- Programs for young people
- Outdoor furniture provider (kiosk) e.g. Beanbags, cushions etc.
- Indoor space/multi-purpose space
- Programs for young people
- Coffee van space
- Wetlands/boardwalks in marsh area; Raised walkway through the wetlands area
- Aerial ropes to pull yourself along
- Multipurpose space/sports:
  - PCYC
  - Community centre is used well; could this space be more functional
  - Mini library – programs
  - Wifi/internet
- Consider vandalism
- Outdoor fitness equipment
- Little dog area; separate small and large dog off leash areas; dogs on lead ok
- Basketball/multipurpose court
- Hopscotch on pathways
- Remote control boats
- Community amphitheatre
- Larger area to congregate everyone for ANZAC services etc
- Highlighting the indigenous culture of the area through street art or public art
- Cultural art display spaces - installations
- Artists wall - young people
- Inspiration - Wagga Victory Memorial Garden would be an option
- Multipurpose event spaces for outdoor cinema; for carols by candlelight, bands, markets etc; Markets - open events space
- Gardens that you can wander through; Artists wall - young people
- Native trees for the area to reduce maintenance - donate and buy a tree program to empower the community
- Whole family integrated space

## 2. Movement and Place

### Traffic management

- Need to improve the flow and safety of shopping precinct that will affect traffic into and around proposed site (Ferodale Road)
- Currently 3 different levels within the shopping precinct and the number of driveways that people have to navigate means that people drive from shop to shop. This is unhealthy way to live in a township. Much better to promote health benefits of park and walk.
- Lights likely on Peppertree Road rather than bridge, roundabout or tunnel – this would allow larger groups of people to move between both precincts (shopping / retail and natural open space)
- Investigate one way options to slow down traffic
- Elevated and quirky speed humps would be preferable along Ferodale Road rather than diverting the road into the parcel of land
- Redirect heavy traffic (trucks) out of centre of town (signage / speed humps)
- Provide wayfinding signage from Medowie Road into Ferodale and shopping precinct
- We need a distinctive town centre. Car parking angled. Slowing down the traffic along Ferodale Road so people can choose to walk around town. At the moment people drive from one set of shops to the other - not healthy and dangerous.
- Fast chargers for electric vehicles (EV)
- Fairlands Road needs to be widened
- Campvale Drain bridge linked to Medowie Social

### Parking

- Angled parking on southern side Ferodale Road and limit the speed to 40kms
- Angled parking can convert into food trucks parking
- Small cluster car parking throughout the site will give access to all types of visitors/residents i.e. easy to park close to amenities for families with kids, elderly (short walk), all accessible (wheelchair friendly)
- Currently parking outside Bull and Bush is used to support retail and markets once a month. The facility has been sold and may lose parking – where is the overflow and where will the markets go? Do we need to allow space for meandering markets on the site?
- Better use of the community centre car parking
- Preferably no parking lots at the new town centre site, but maybe some parallel/angle to curb parking if it's really necessary

### Pathways

- Place footpath / bike track across the Ferodale road to keep kids safe. The bike track could form part of the experience with access into the nature area / playground / park. There needs to be provision for bike racks, water fountains, dog bowls

- Boardwalk type pathways that relate and reinforce nature, but also provide options to still visit the southern side of the block where flooding occurs... turn the negative into a positive and have footpath as having safe access to go above the ground level and look out over the water (when heavy rain) i.e. Tilligerry walk
- Wide enough to provide options for shared pathways and also enough space on either side for exercise equipment stations, grassed area for picnicking, tai chi overlooking water – people need to be able to peel off as they discover new options “around the corner” it becomes a surprise and a delight to discover new uses in the space
- Wide walkways (as wide as possible) paved or decorative concrete with key features spaced throughout (e.g. water feature, climbing things, large potted plants, comfortable timber seating in line with the Medowie Makeover)
- Can we have dedicated zones / times that close down the footpaths so dedicated running / cycling groups i.e. park run can use this asset.
- Can we provide options to link the community centre with pathways through to Medowie Social and sporting precinct
- Very important the feeling of meandering, discovering and exploring along the footpaths, rather than just a mechanism to get from point A to point B
- Use pathways to create art trails, even as simple as painted hopscotch etc - allow people to really interact and play! Flooded and wet areas - interact with the environment - turn the deficit into something wonderful i.e. duck ponds, boardwalk
- Connect the 2 sides of Ferodale and make it easier for pedestrians
- Shared pathways – need an education campaign to support the mixed use bikes / people / prams / wheelchairs
- Concerns over driveways / lots of crossings - need to watch out for these, need to consider safety bike path on the new block to keep it safer for people / kids
- Connect pathway from Medowie social through the trees and connect to Tallowood and another to the community centre
- Wetlands bridge and path to connect to Medowie Social and Medowie Sports Complex and track around at all

## Lighting

- Creative use of lighting that provides unique ways to light pathways, seating and footpaths – encourages people to linger in their place for longer
- Encourages and promotes night time economy opportunities such as “light up the night” walks, nocturnal animal spotting tours, musicians / buskers
- Use lighting to promote safety in creative ways i.e. pedestrian lighting etc
- Use up-lighting into trees to again reinforce the importance of trees / nature have to those in the community of Medowie
- Solar stations should be incorporated – sustainability and nod to the environment
- Lighting options that can double as heat lamps during winter therefore encouraging people to get out after dark
- Need to be mindful of animals that lighting doesn’t have negative impact
- Example Sun Dial in Zadar – Croatia

## **Place making / public spaces / things to do**

- Sensory options – if we can't have the big playground, perhaps we look at a different USP... having a sensory garden / walk / areas instead
- Natural water play
- Artworks that give something interesting to see on the ground and / or encourage people to walk further around the path to explore more
- Giant piano on the floor that lights up and plays music
- Shaded areas
- Provide seating that celebrates the essence / feel of Medowie (tree seating, quirky design, charging stations built into seats)
- We want people to meet and converse in public spaces – would like to hear music (would be good to incorporate power, charging stations, speakers, wireless, Bluetooth, power)
- Graffiti wall – encourage people to “leave their mark” – show the art / youth
- Open BBQ areas / community pizza oven
- Buy a picnic at the shops and use BBQs near the tree area
- Hold events like open-air cinema, mountain bike weekend (with camping), or use the skate park for remote controlled cars
- Community garden opportunity and path to Medowie Social. Connect all the different opportunities and places that the centre has to offer
- Consider 7 Day Makeover / place activation opportunities
- The new stage created at the 7-Day Makeover is not utilised as it is a bit too small
- Perhaps look for small-scale opportunities or find ways to improve the area further to make attractive and get activity around it. For example, coffee and bacon rolls on Sundays with an opportunity to use the stage
- There are at least 5 coffee car owners in Medowie - contact for future activation opportunities in staged area

## **Planting/ Nature/ Environment**

- Preserve and strengthen the “theme” of our town: Medowie is a Place of Tall Trees
- Working with community groups, like the gardening groups to assist in planting, growing of plants and trees
- Use street plantings / trees to encourage people to turn off from the roundabout and be led naturally into the town centre
- Use street trees to create an avenue of deciduous trees - makes a statement of what is the town centre and encourages people to slow down, walk, relax, ponder, appreciate colours and seasons
- Use deciduous trees where possible and replace with light when leaves fall
- Please retain nature corridor between site and housing estate next door - so that natural perimeter screens out housing
- Bird feeders / nature boxes to encourage animals

## Spaces

- Open dining areas like a piazza area (Meadowie Common) that has extended opening hours (thus activating night time economy as well as early morning get togethers post tai chi, meditation sessions etc) / shaded seating areas are missing - great opportunity to provide seating that celebrates what is the essence / feel of Medowie
- Provide options for hammocks – people hanging about in the trees
- Vibrancy in the space, activate and allow events and activities to take place
- Use the terminology ‘natural creeks’ (instead of a drain)
- Splash park incorporated into the design

## 3. Town Centre

### Look and Feel/Character

#### Create a pedestrian friendly town centre

- The centre has a strong car focus. Many people don’t walk, but drive between the shops in the town centre. This further creates a less attractive environment for pedestrians, as it remains car dominated.
- Ensure the town centre is accessible and pedestrian friendly.
- Create better bike and pedestrian areas and access with the commercial areas reflecting this.
- Connect the Tallowood development to the new town centre site with a footpath.
- End of trip facilities are required for (mountain) bike riders. People come from all over the (outer) region to ride in the Medowie area, but there is no supporting infrastructure.
- Create a Piazza style town square, linked with businesses and open recreational space.
- There is no wheelchair access and not even pedestrian access to McDonalds.
- Inspiration from The Canopy - Lane Cove Canopy: environment for the community and retailers to converge, convenience and atmosphere for day and night trading and activities. Open green space casual and formal dining options, park activities for all ages and a purpose built stage for entertainment and events.

#### Include Park and Playground in new town centre site:

- The site needs to include open space - park/playground, BBQs.
- Like Centennial park has a shop for beanbags and the like so you spend the whole day in the park. Could this be a community run kiosk?
- Take into account all abilities, sensory experiences.

#### Look and Feel:

- Residents appreciate the rural look and feel of Medowie and support the concept of Tall Trees.



- Town centre needs more charm, character, and personality. There are currently no attractive buildings. We want to be a town not a suburb.
- Country town feeling is missing in the town centre. Main Street concept is important, with trees and places to sit.
- Use natural materials, like natural stone. Don't create a concrete jungle in our beautiful natural setting. Integrate new development in this natural setting.
- Create a really organic environment in the town centre, like garden café and a boardwalk like in Tilligerry.
- Building height may affect the look and feel of the place. No more than 2 storeys and no high-rise/multi-storey in the town centre.
- Need an urban design panel - not cheap and nasty. Future developments - look to future/not tossed out.

#### Inclusive:

- Space should provide for all and be inclusive. Ensure accessibility for all people. Don't use pavers and ensure accessibility.
- Young people 14-24 considerations.
- Public spaces to remain alcohol free (if kids around).
- Create an inclusive place, not just for one group of people. Places for all ages. Refer to Oatley (Hurstville).

### **Commercial land and uses**

#### Support for commercial uses:

There is general support for the inclusion of commercial uses on the new Town Centre site, but it is 'conditional' to:

- Limited height.
- Small scale (no big box).
- No big-box retail (like Best & Less), but focus on smaller businesses, that can be run by (local) families.
- The rural setting of Medowie is to be maintained and strengthened; big franchises do not fit this profile.

#### Commercial type of uses:

- Small-scale eateries - near playground. Restaurants and café's that overlook open space.
- Cafe would be nice, but is hard to get to Medowie.
- Cafes with outdoor seating.
- No pub; no Aldi.
- Eco-lodge/ accommodation.
- Eco hotel on this site could cater for family visiting Medowie and mountain Bike riders could stay for a weekend, spend money in town. Target people who are already visiting to stay longer.
- Wedding venue.

- Businesses that outgrow the markets. Possible collectives (Nelson Bay) or "try space" for business; incubator style.
- The new town site can be a catalyst for other sites to also (re)develop. I.e. existing town centre site or land on the other side of Ferodale Rd (Bull n Bush strip).
- Restaurants could accommodate 2-storey in a central area of town where there is always something to do, day and night. Like cinema, restaurants, play opportunities.
- Park could generate money for the park by including a volunteer run kiosk with rentals.
- Rooty Hill RSL as an example.
- Commercial sport business/places/ Indoor sports centre are looking for space in Medowie (like gymnastics).
- PCYC could be as a focus area for young people (Medowie is a very sporty town) - see Cessnock.

#### Mix of residential and commercial:

- There would be substantial population growth in coming years and need for additional housing and commercial uses.
- Sydney/Rousehill shopping centre is an example of commercial and living mixed - could be an idea, but very modern; not sure if it fits Medowie?
- Scale of development could be single storey or multi- storey.

#### Surrounds:

- Piazza style eating opportunities and with places to sit; well connected by footpaths.
- Missing in the centre is a piazza style outdoor area. Need to work out where cars can park elsewhere.
- Shopping centre is very enclosed. Piazza idea could work. Shaded areas would be good
- Standardised shop fronts with a common design running throughout
- No A-frame signs cluttering the space.

#### **Residential uses and type**

- A suitable mix of commercial and residential will support a growing population.
- Option is for 1 or 2 storeys of residential above commercial ground floor.
- The new town site could offer more residential and commercial diversity for Medowie.
- Development of the site should consider the look and feel of Medowie (trees, rural character).
- If development doesn't go upwards, you will need to spread out and take up more land for the residential and commercial needs at the cost of other uses.
- There are design solutions that mitigate height, like screening, recess, and use of trees.

## **Environmental assets and constraints**

- Consider the flood prone land at the western end of the new town site (near Medowie Social) for boardwalks and other infrastructure that may be suitable to access and utilise this part of the site.
- Protect and enhance vegetation and wildlife (koala) crossings near Bull n Bush and habitat/corridor in the western part of the new town centre site.
- Can Campvale Drain become a natural asset with incorporated wetland walks?
- Introduce EV charging points as it fits with the natural environment of Medowie.

## **Tourism**

- Plenty of tourists coming through the town - encourage them to stay longer and spend.
- RV parking and friendly town for short term overnight; RV parking and RV Friendly Town, short term.
- Need the right signage and activation to pull tourists off the main roads and take some time to shop or kids to play in Medowie.
- Medowie could become an attraction for visitors and encourage hotel operators / developers to invest in the town.
- Caravan parking is missing for tourists wanting to visit and spend in town.
- Mountain bike riders visit Medowie from far, but no place to stay.

## **Other**

- Consider cost of living and cost to Council when planning for the town centre area as there is a long term effect on rates. For example, skate park may chew up a lot of Council budget.
- Community and businesses can assist and contribute to projects, which reduces costs to Council. For example, Landcare groups could assist with implementation and future maintenance of landscaping, or tree planting.

## Appendix F – School workshops (Aug 2022)

### School Workshop results

School workshops were held in August 2022 at Medowie Public School (8 students) and Catherine McAuley Catholic College (28 students).

The workshop encouraged students to think about the needs of various users of the town centre and the opportunities offered by the town centre expansion site (38 Ferodale Road). They used this information to create a plan/design for the site.

The topics they considered were:

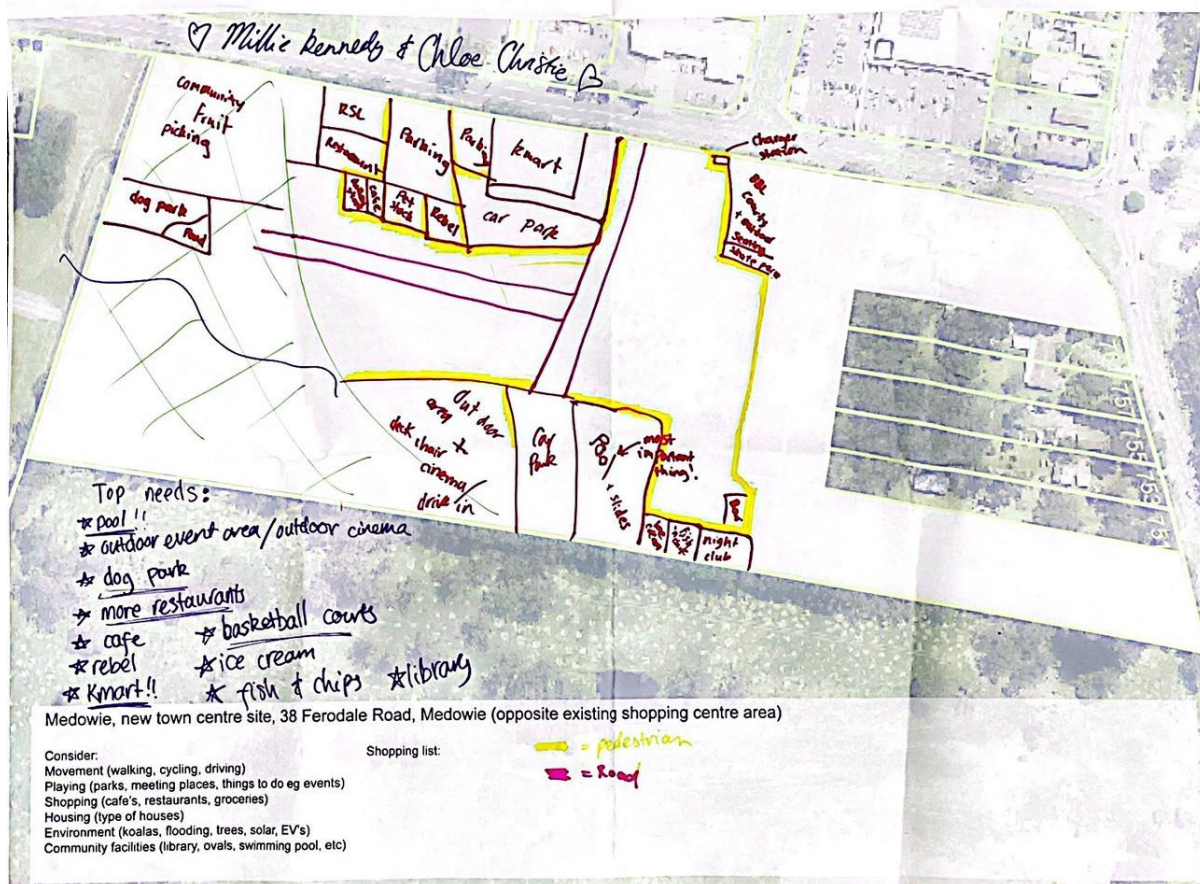
- Movement (walking, cycling, driving)
- Playing (parks, meeting places, things to do, events)
- Shopping (cafes, restaurants, groceries)
- Housing (types of housing)
- Environment (koalas, flooding, trees, solar, electric vehicles)
- Community facilities (library, ovals, swimming pool)

Below are some of the plans they created for the new town centre expansion site at Ferodale Road.

Basket Ball Court (over)  
 Netball Court (Full)  
 Better Skate Park  
 Bike track / Pump track  
 mountain  
 Arcade (timeszone)  
 Outdoor Event Area  
 Ice-Cream Shop  
 Outdoor Cinema  
 Night Club  
 Apple tree  
 Dirt Bike track  
 Community Garden

Pool

Go kart  
 Petting zoo  
 Cinema  
 Library  
 Kmart  
 Pub





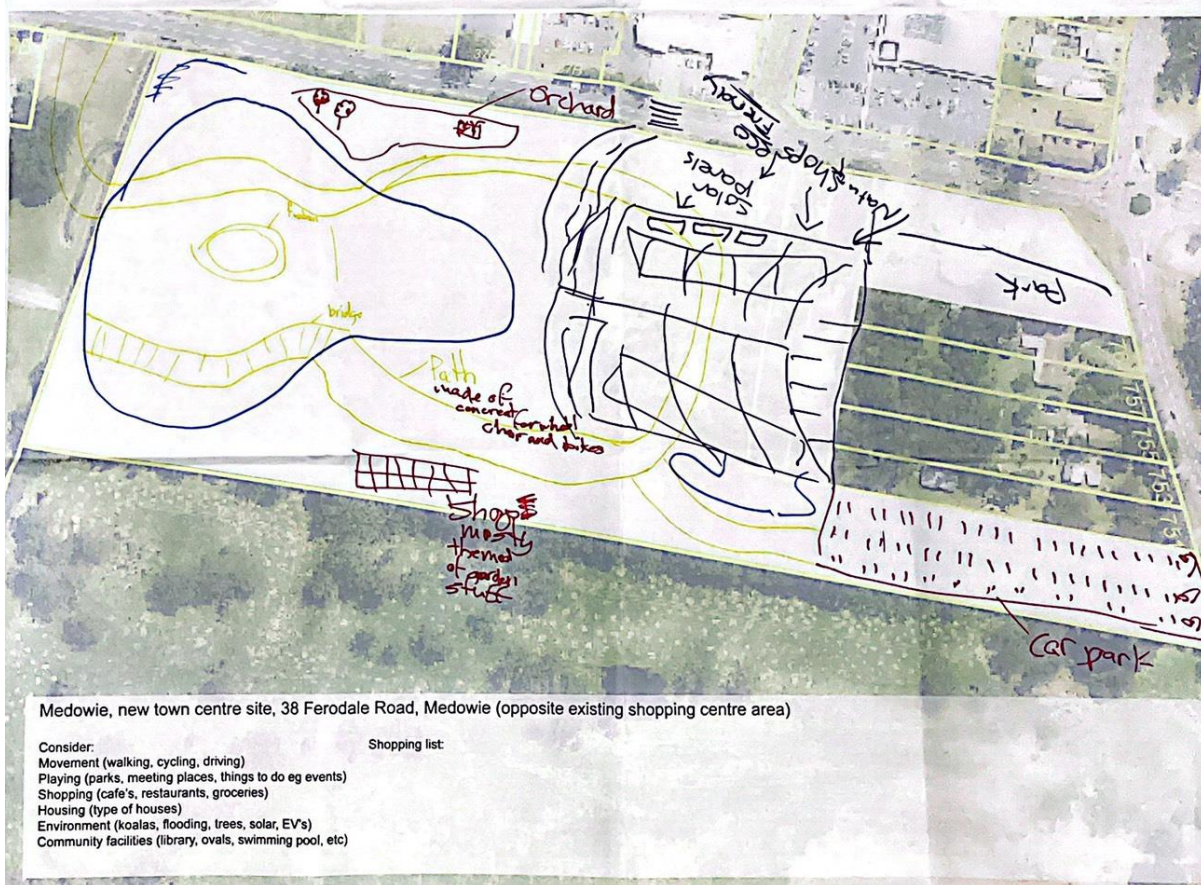
Use VSP flood along 45 or look  
Small community errors  
(crossing area connecting from Park to Dunes town center  
shop turned for Zedda stuff

Bill

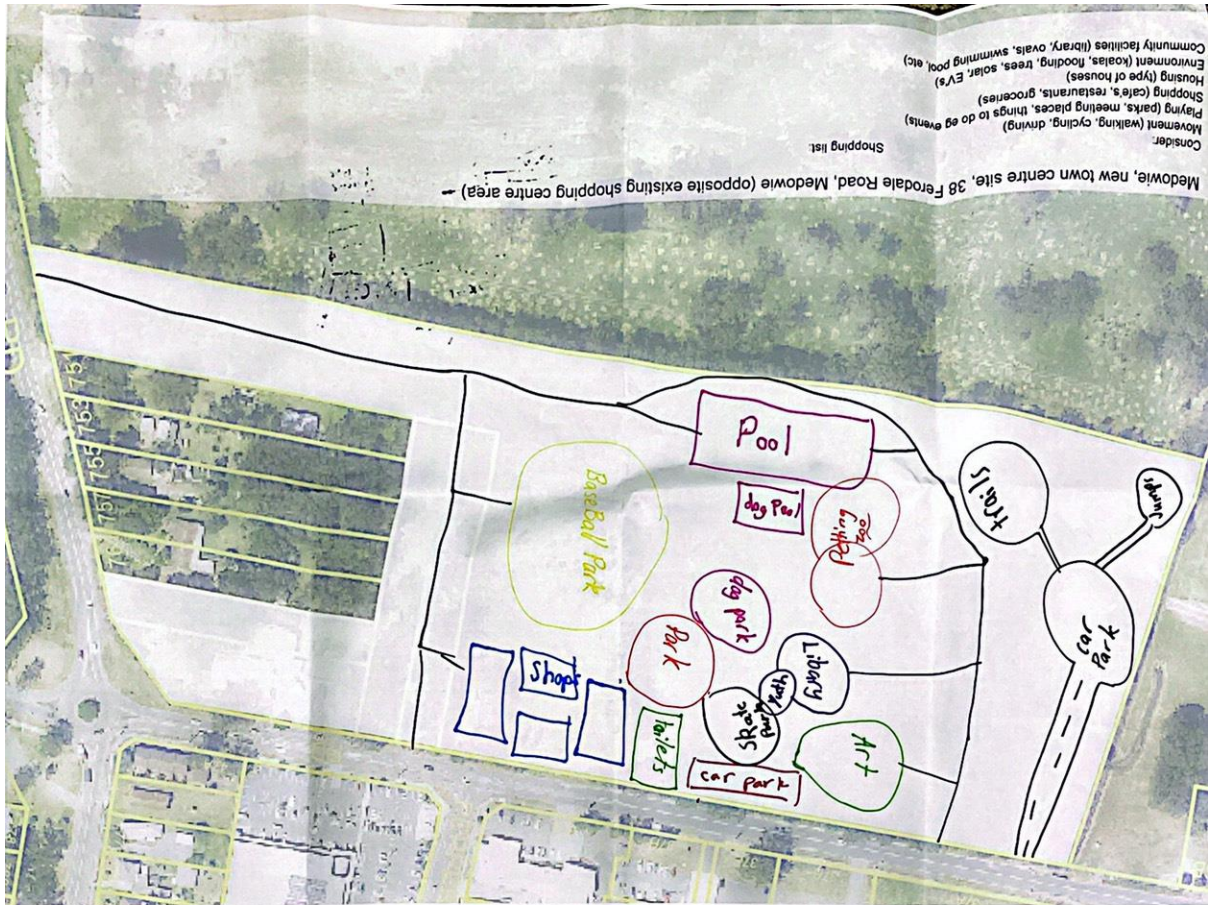
Why?

Angus

When you think you don't normally think ~~Medawie~~ pretty but we are here to change that adding a land mark to Medawie (The fountain) and large opened space, mostly because Medawie is very cataphobic







Consider:  
 Movement (walking, cycling, driving)  
 Playing (parks, meeting places, things to do eg events)  
 Shopping (cafes, restaurants, groceries)  
 Housing (type of houses)  
 Environment (kiosks, fooding, trees, solar, EV's)  
 Community facilities (library, ovals, swimming pool, etc)

Medowie, new town centre site, 38 Ferndale Road, Medowie (opposite existing shopping centre area) -



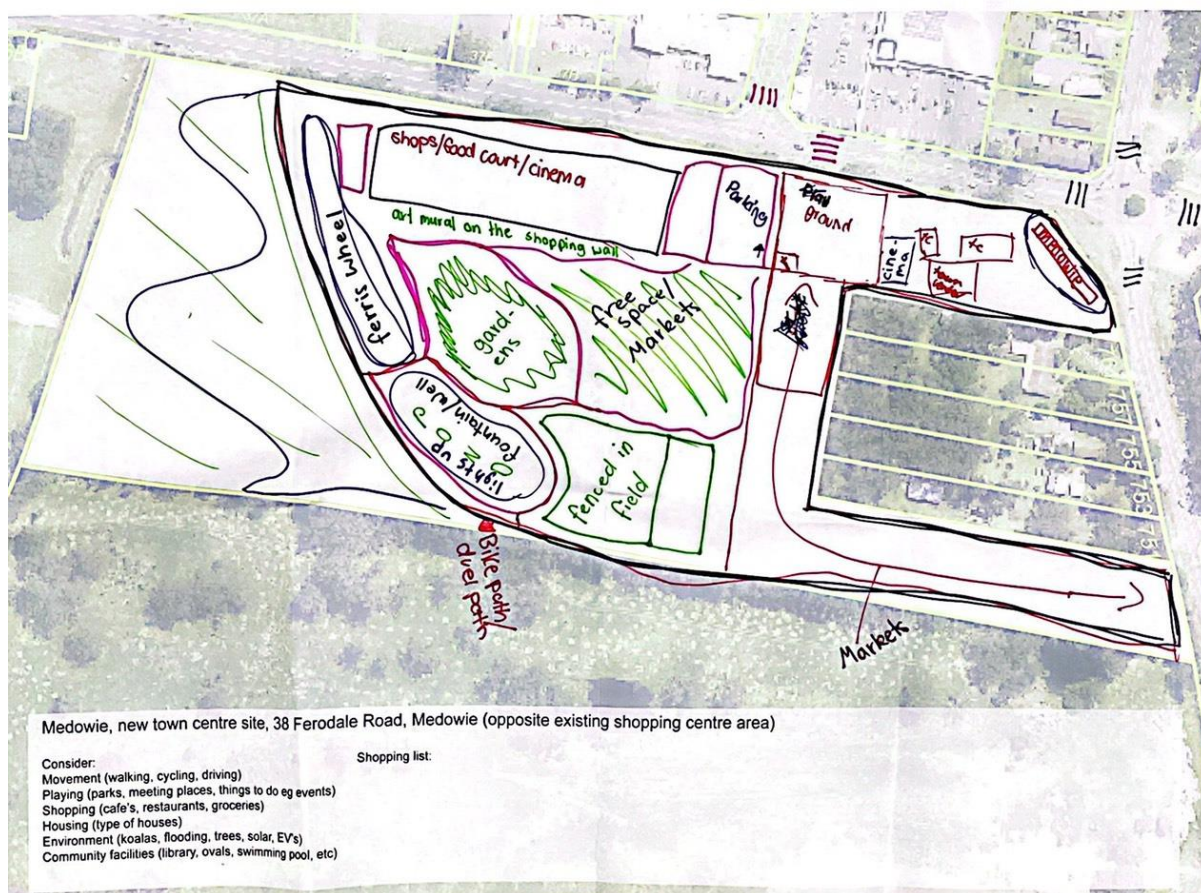




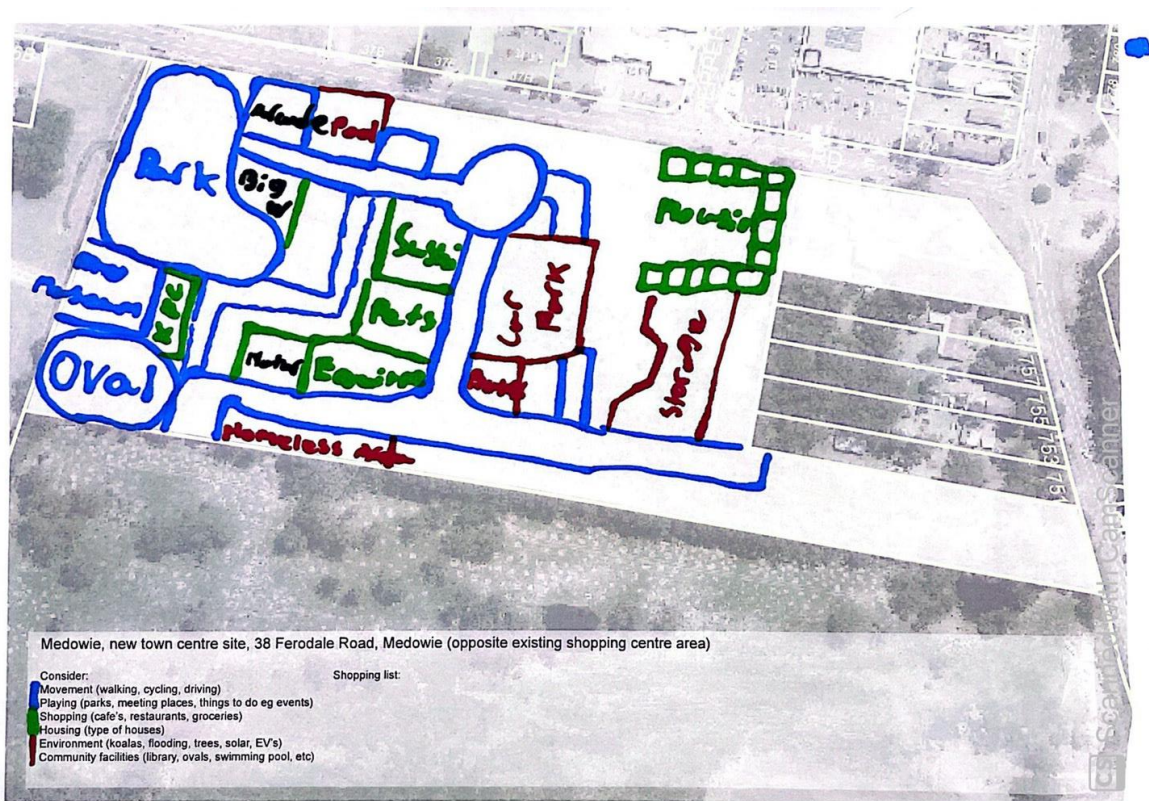
A Bush walk near trees  
(around flood area)  
New houses\*  
Bike path (duel, loop)  
cinema\*  
~~Food (large)~~\*  
Markets  
Shops\*  
Food court  
Play ground (fence around)  
Fenced in field\*

~~roller coaster~~\*  
Ferris wheel\*  
toys & us\*  
Medowie letters  
Art mural  
statues  
gardens\*  
Pedestrian crossing

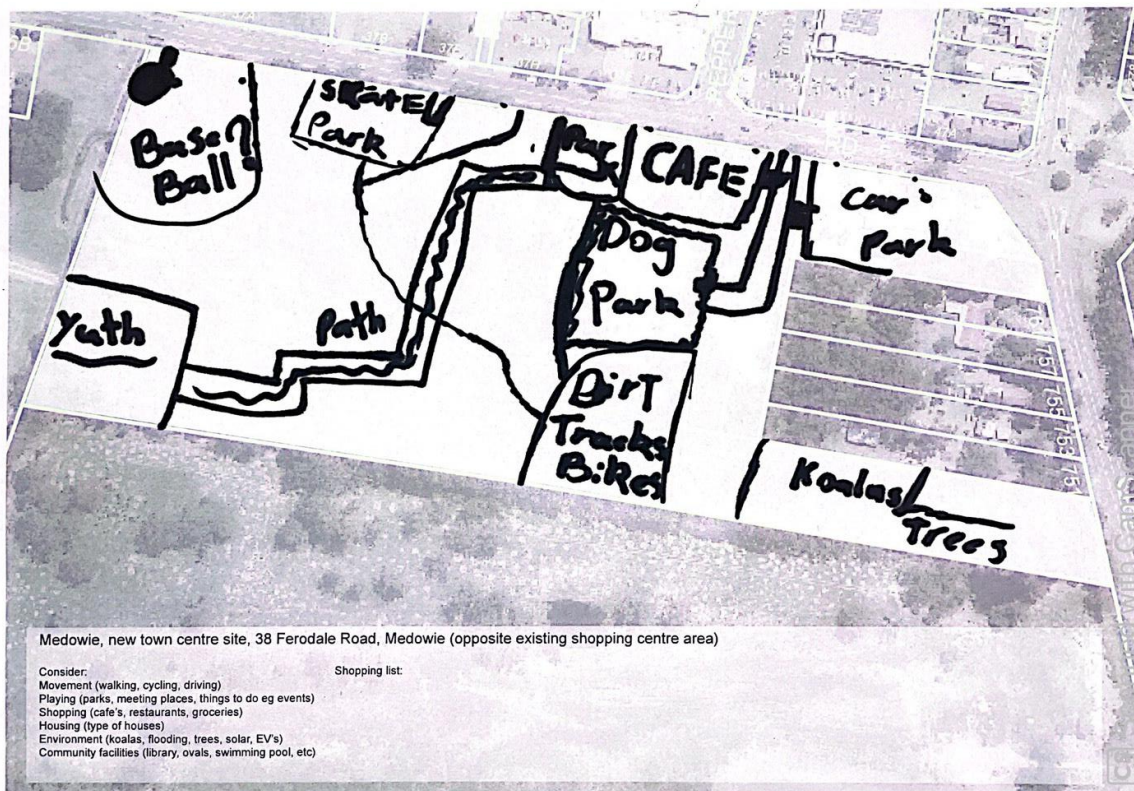
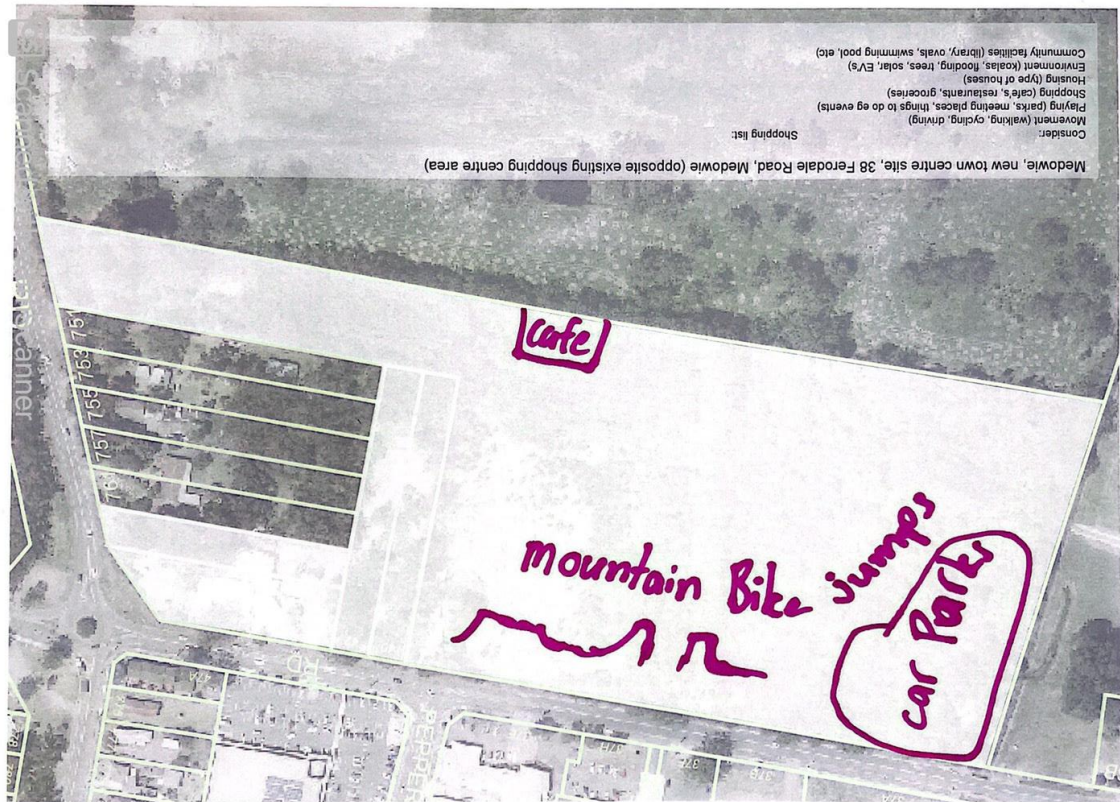
Black Bike ~~Path~~  
Pink walking track  
green grass area







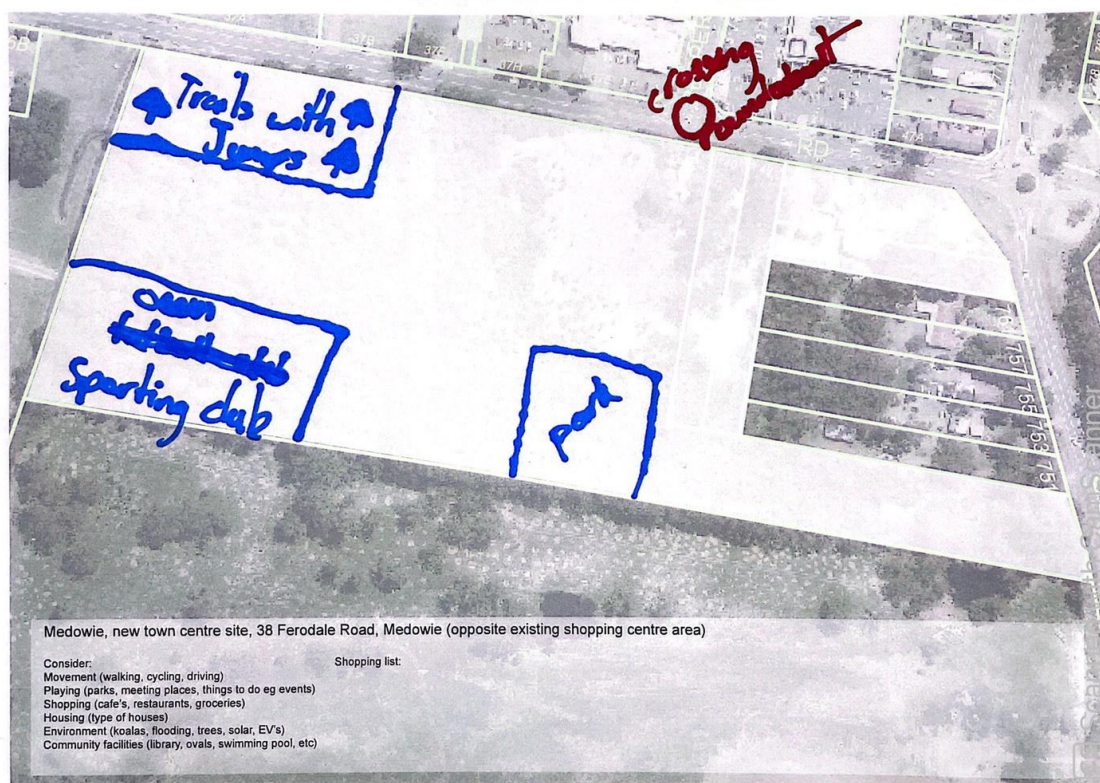
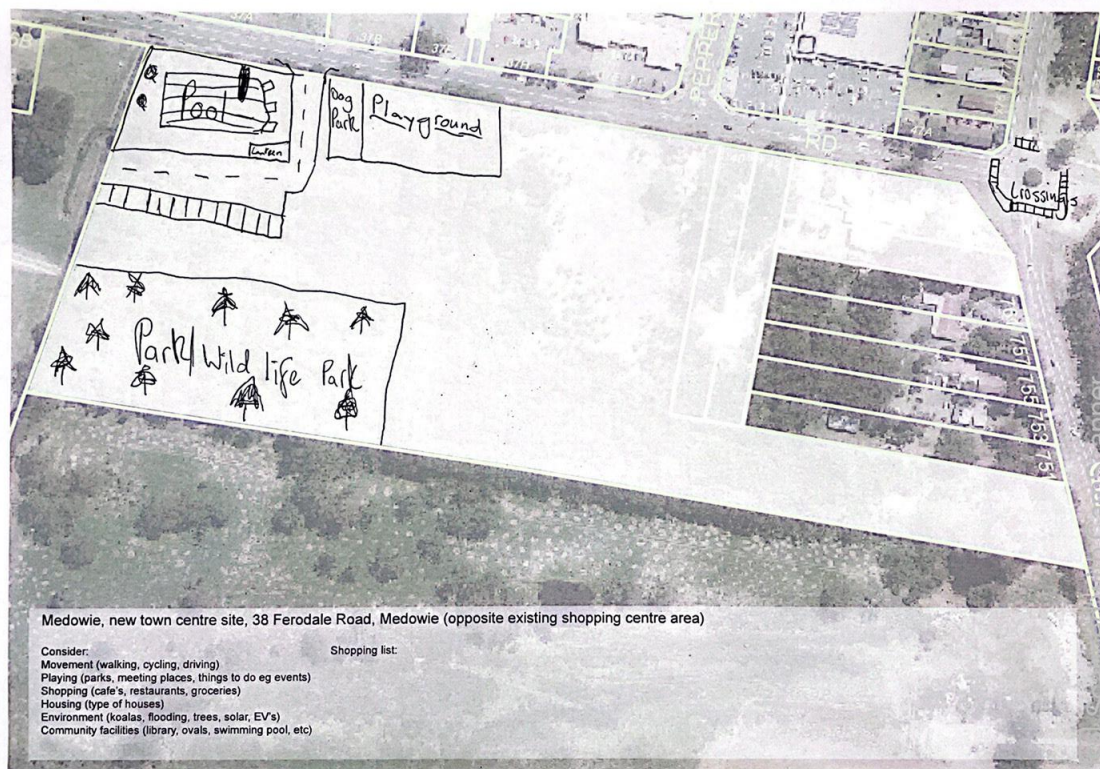




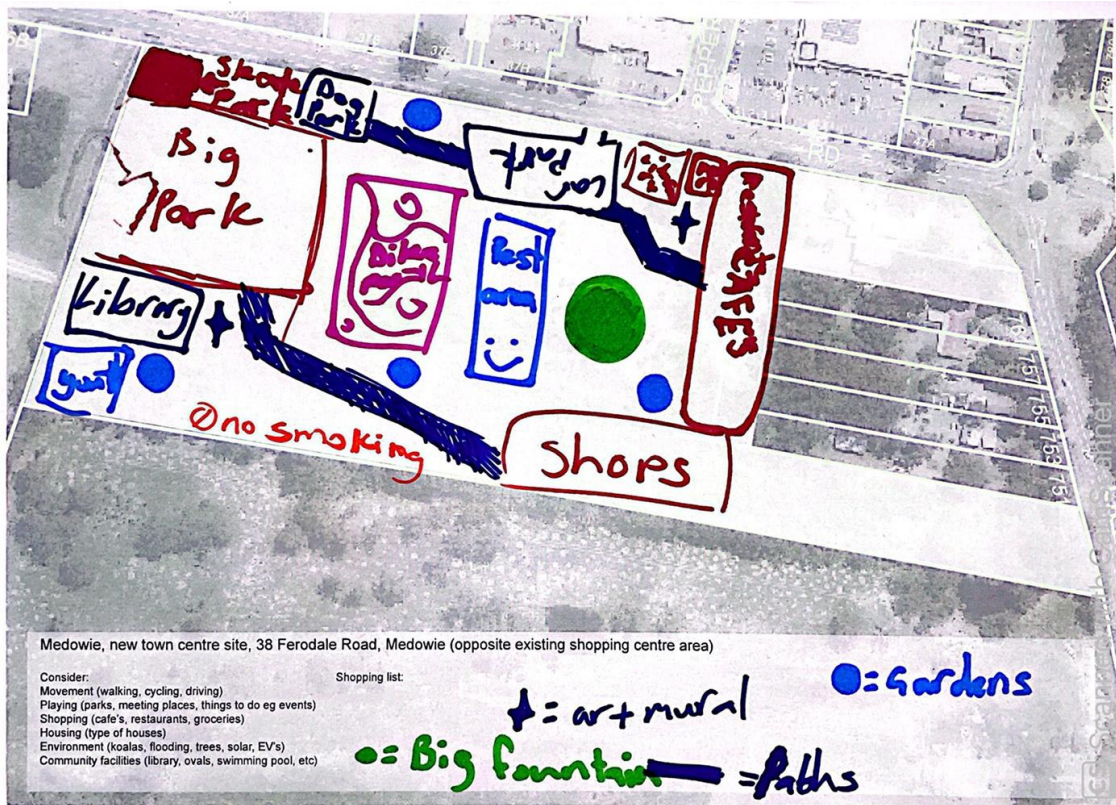










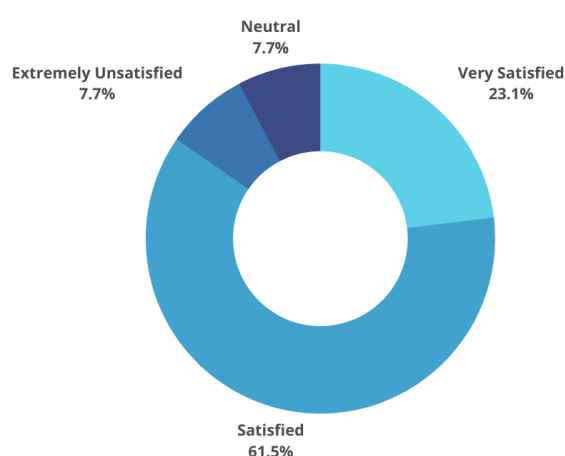


## Appendix G - Check-in survey (Aug 2022)

People who attended at least one of the workshops about the Medowie Place Plan had the opportunity to respond to a short survey to confirm the direction of the draft place plan. A draft concept plan for the town centre expansion site and draft place plan actions were provided for this purpose (August 2022). The survey was completed by 14 people.

**Note:** One respondent contacted Council after submitting their survey because they had answered at the wrong end of the spectrum. Their answers to those questions were removed.

### 1. What do you think of the concept plan for the town centre area at 38 Ferodale Road, Medowie and its immediate surrounds?\*



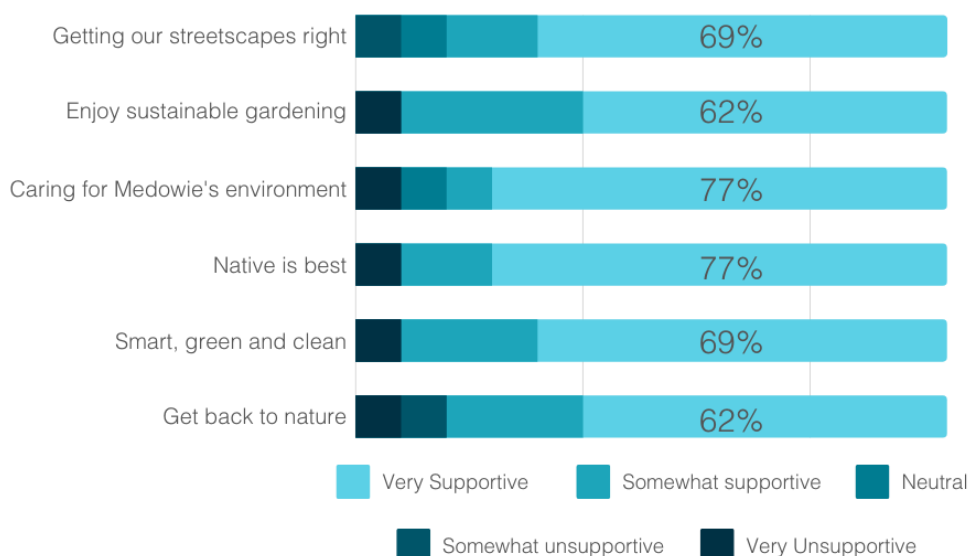
**Optional question** (8 response(s), 6 skipped)

### 2. Do you have any specific comments about the concept plan in general? (short answer)

#	Comments
1	Please make sure we have open space and lots of native plants and trees.
2	Love the inclusion of conservation
3	Must provide longevity ... do it first ... do it right. Any installation must be robust and maintained.
4	Great idea. Gives the kids a place to socialise.
5	no town square? no connectivity from community centre to the new square
6	Concerned about the areas of residential expansion in size proximity to play areas and style to suit the recreation area
7	Should not have allowance for future residential. This removes further opportunity for additional public space as the town grows.



### 3. What do you think of each of the 6 Environment action items for the draft Medowie place plan?\*



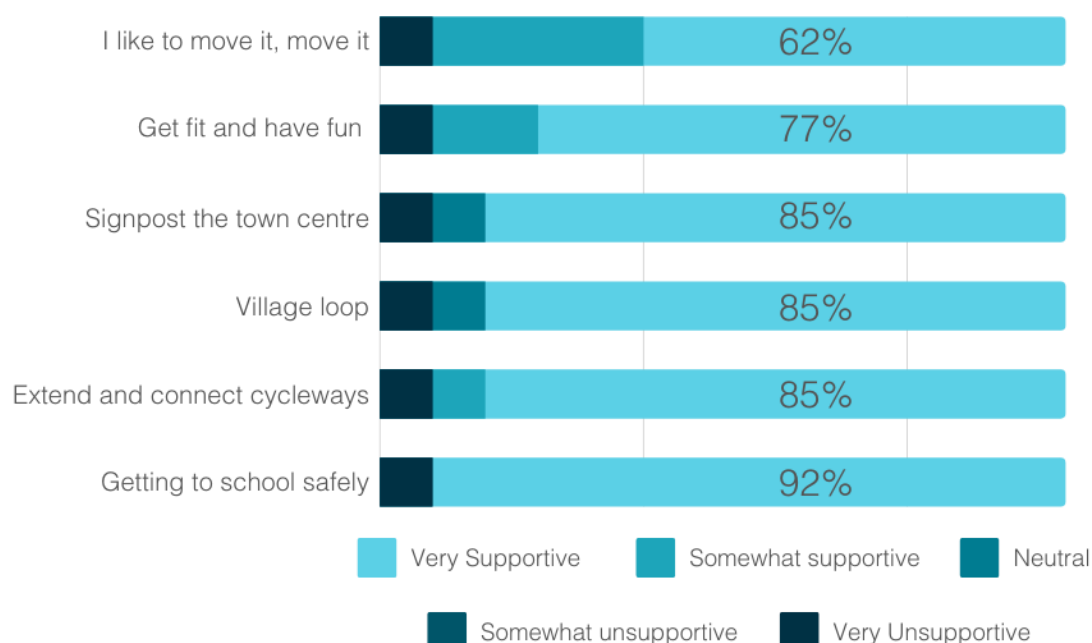
### 4. Do you have any specific comments about the draft Environment action items (short answer)?

#	Comments
1	Would love a sustainability hub like Randwick where the community can be involved and kids and groups can be educated.
2	Inclusiveness is very favourable
3	Plant native trees and remove foreign trees (pine trees). Love the avenue of trees & lighting for Ferodale Rd, Peppertree & Medowie Rd. Involve Murrook Green Team.
4	Keep it as green as possible, minimize the # of buildings and roads.
5	Plant trees please
6	Need to minimise felling of native trees. Some are over 100 years old but the council has no concern for clearing natives
7	The more native plants the better, the more birds we get

Optional question (7 response(s), 7 skipped)

Question type: Single Line Question

**5. What do you think of each of the 6 Movement action items for the draft Medowie place plan?\***



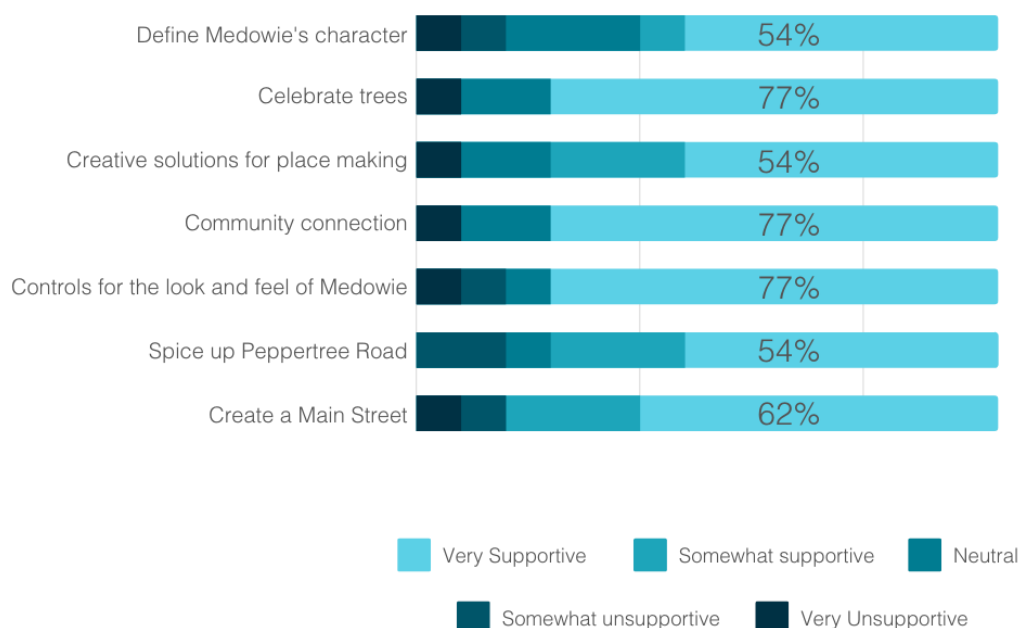
**6. Do you have any specific comments about the draft Movement action items (short answer)?**

#	Comments
1	Definitely need bike tracks in the town centre.
2	Look after the children, they are our future.
3	Put a cycle path from Medowie Rd roundabout up to Wirreanda School and down to Medowie School for kids to ride scooters and bikes to school. Indigenous murals by Jim Batt are amazing! More of these please.
4	Excellent.
5	Children / elderly safe areas.
6	Need to have good parking areas for bikes in town areas.
7	To have it in place as soon as possible.
8	Extend sign posting to other areas of the town, eg, skate parks, playgrounds, businesses, sporting facilities (tennis, Soccer, etc.).

**Optional question** (8 response(s), 6 skipped)

**Question type:** Single Line Question

## 7. What do you think of each of the 7 Character action items for the draft Medowie place plan?\*



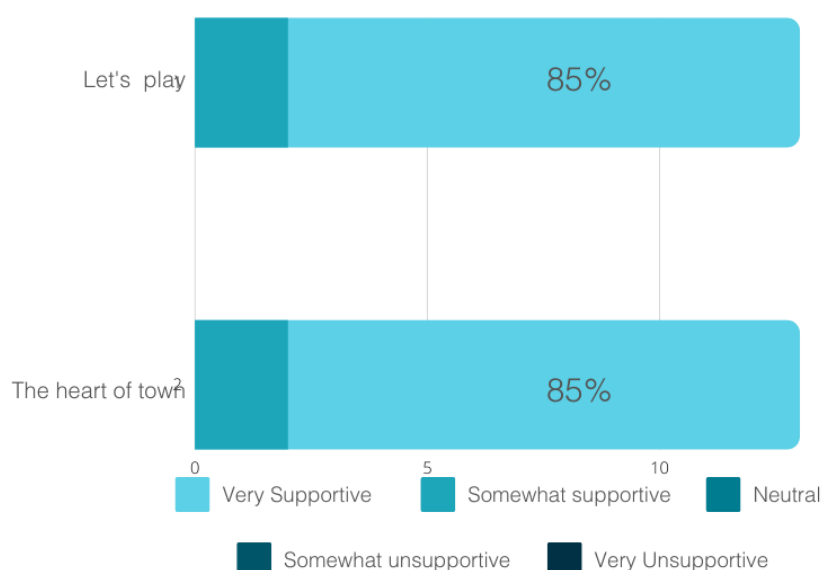
## 8. Do you have any specific comments about the draft Character action items (short answer)?

#	Comments
1	Need more shade and places for young people to hang.
2	We need a main street style of encouragement.
3	It would be great to achieve this, presently our look is all over the place.
4	Open drains on Medowie Rd/Ferodale Rd=3rd world country character, should be enclosed, curb the gutters there. Cutting down trees for housing developments means Medowie not a Place of Tall Trees. Focus on village character with a big YES to avenue trees.
5	Excellent ideas.
6	We need controls in what businesses move into peppertree road to prevent a repeat of what we just saw happen.
7	Murals tend to attract graffiti, which decreases aesthetics, would prefer to see small gardens and sculptures.

Optional question (8 response(s), 6 skipped)

Question type: Single Line Question

**9. What do you think of each of the 2 Open space action items for the draft Medowie place plan?\***



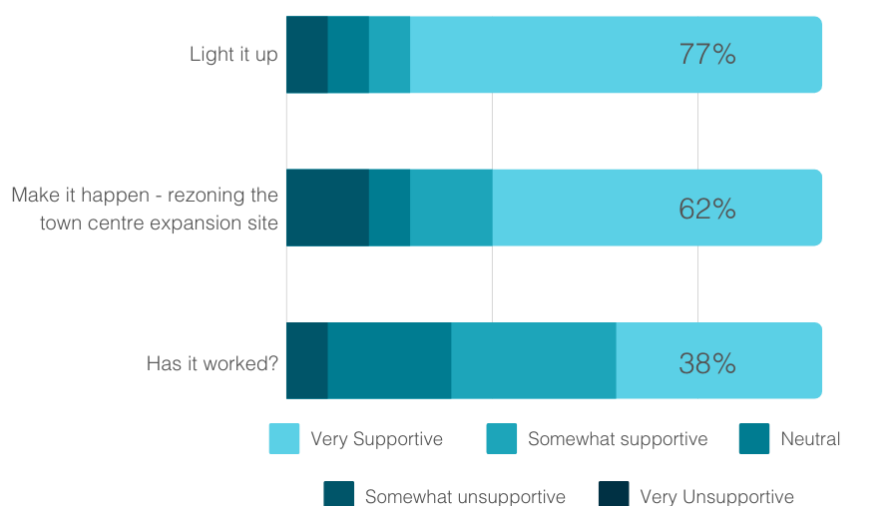
**10. Do you have any specific comments about the draft Open space action items (short answer)?**

#	Comments
1	We need an accessible lay ground and skate park. My son has disabilities and the current one is out of his league. Maybe we could have a mini track with street signs for kids around the playground.
2	Recreation precinct with skate park, toilets, water fountain, covered BBQs and picnic tables right next to Ferodale Rd for passive surveillance and kid's playground, NOT next to the carpark. Sealed path into the skatepark so kids can ride there. Splash Park.
3	Keep the town square as open and grassy as possible where fitness classes can operate and kids can run around. improve the existing play area near the community centre. Ensure no road truncates the two to allow freedom of movement.
4	Perhaps dog friendly, with poo bags and bins around.

**Optional question** (4 response(s), 10 skipped)

**Question type:** Single Line Question

## 11. What do you think of each of the 3 Management and safety action items for the draft Medowie place plan?



## 12. Do you have any specific comments about the draft Management and safety action items (short answer)?

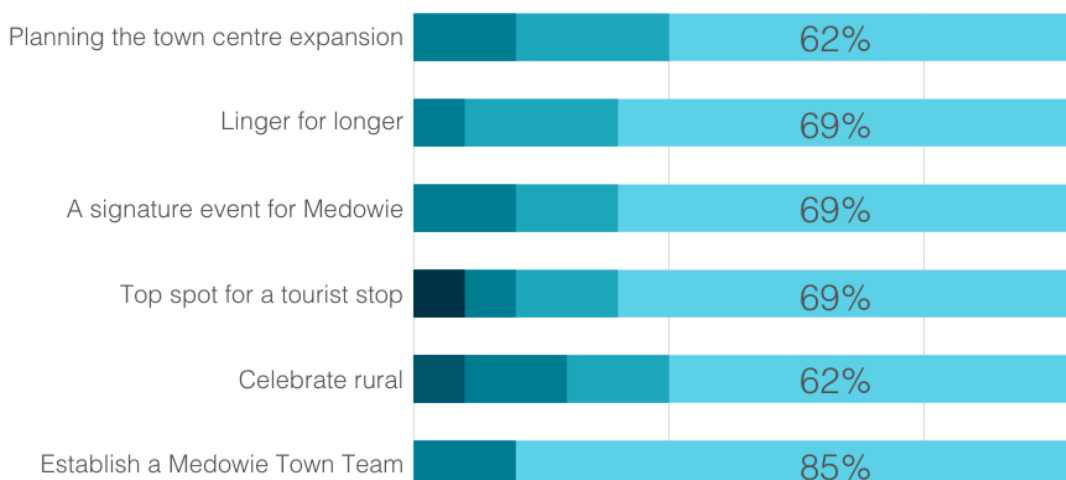
#	Comments
1	With lighting up I'd risk of younger people and antisocial behaviour after hours. Don't have any tunnels or spaces that could be used for vaping.
2	Not happy not what was talked about.
3	Alcohol free zone at skate park, zero tolerance on graffiti. Install lights for skate park (users hit button for brighter lights set timer like at Charlestown skate park). Skate park remote control car races at night. Demolish townhouses Ferodale Rd roundabout.
4	lean toward conservation and recreation for this space not commercial development.
5	Lots of lighting.
6	I support future commercial growth in the town centre but not residential. The proposed residential area could be repurposed for short term, 1 or 2 night, caravan parking to attract passing through traffic, which intern, supports businesses.

**Optional question** (6 response(s), 8 skipped)

**Question type:** Single Line Question



### 13. What do you think of each of the 6 Economy action items for the draft Medowie place plan?\*



### 14. Do you have any specific comments about the draft Economy action items (short answer)?

#	Comments
1	Support, space and incentive for local businesses to open on a Sunday.
2	We need to be on the same page.
3	Growers markets are a strong draw card and should be key to promoting out town.
4	Custom-made street furniture has not weathered well; no one uses it or the hopscotch. Better to plant trees and lighting to create character. Put rubbish in the bin for free-WiFi at skate park, like Raymond Terrace. Medowie as a rest stop from the freeway.
5	The current town centre needs a face-lift to improve connectivity. It is a dogs breakfast currently and a local team to have oversight is a good thing.
6	Can't wait to have this happen, to liven it all up.
7	As above, adding overnight caravan use area can increase tourist pass through on the way, or driver reviver stop for highway.

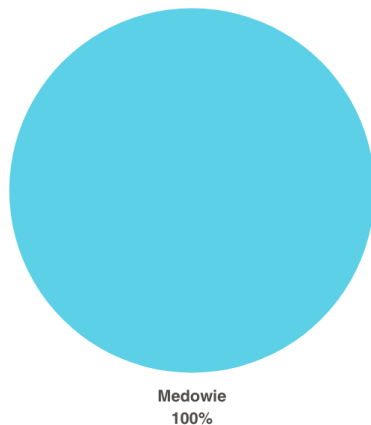
Optional question (7 response(s), 7 skipped)

Question type: Single Line Question

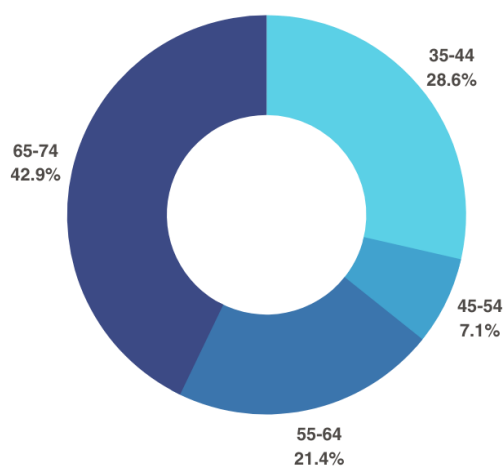
**15. Please put your email address here to help us confirm and build up our list of local Medowie experts!\***

Answers were removed for privacy reasons.

**16. What is your suburb?**



**17. What is your age bracket?**





**PORT STEPHENS**  
COUNCIL