

# EVACUATION DIAGRAM & EMERGENCY PROCEDURES

**Medowie Community Centre** 44 Ferodale Road, Medowie NSW 2318

## ON BECOMING AWARE OF AN EMERGENCY

### REMOVE PEOPLE FROM DANGER AREA.

Assist others (particularly those that may be mobility impaired) to the facility's Emergency Assembly Area as shown below.

### ALERT OCCUPANTS & RAISE THE ALARM.

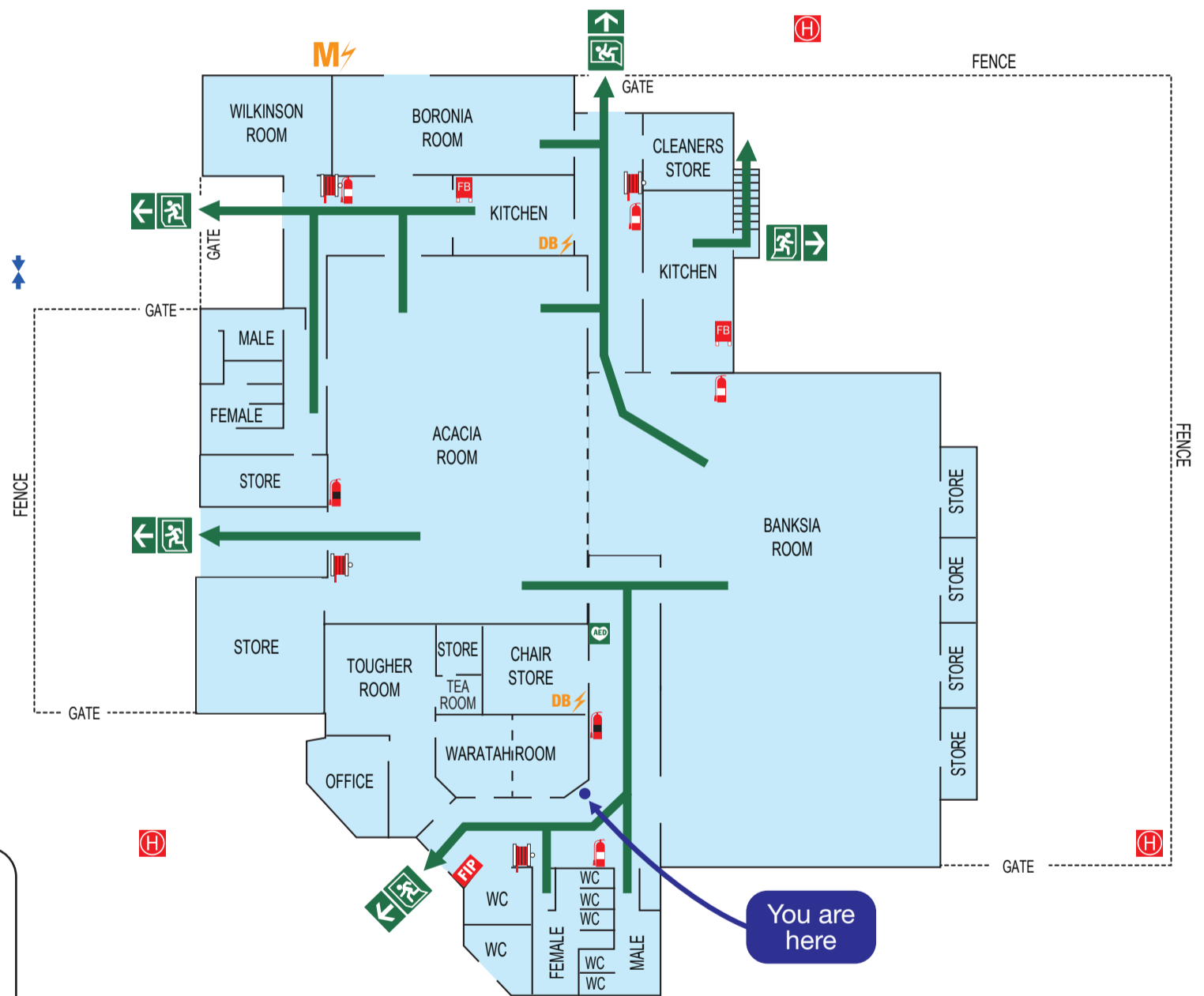
Ensure the Fire Brigade is notified -Dial 000. Activate any facility Emergency Warning Systems where installed (for example manual call point on the front of the fire indicator panels). Contact PSC representative and tell them what has occurred when it is safe to do so.

### EVACUATE TO A SAFE AREA.

Evacuate the building via the nearest safe exit route and wait for assistance from responding emergency services. Do not re-enter the facility unless instructed it is safe to do so (by the emergency service personnel).

### CONFINE THE SMOKE & FIRE.

Restrict the spread of the fire. Attempt to extinguish the fire, **only if safe and trained to do so**. Work in pairs.



Supply of first aid kits are the responsibility of the hirer and their location may vary

### LEGEND

- EXIT
- EXTINGUISHERS
- FIRE HOSE REEL
- FIRE HYDRANT
- FIRE BLANKET
- HYDRANT BOOSTER ASSEMBLY
- FIRE INDICATOR PANEL
- AUTOMATED EXTERNAL DEFIBRILLATOR
- MAIN ELECTRICAL SWITCHBOARD
- ELECTRICAL DISTRIBUTION BOARD
- WATER ISOLATION
- ASSEMBLY AREA

H-BOOSTER

CAR PARK



# EVACUATION DIAGRAM & EMERGENCY PROCEDURES

**Medowie Community Centre** 44 Ferodale Road, Medowie NSW 2318

## ON BECOMING AWARE OF AN EMERGENCY

### REMOVE PEOPLE FROM DANGER AREA.

Assist others (particularly those that may be mobility impaired) to the facility's Emergency Assembly Area as shown below.

### ALERT OCCUPANTS & RAISE THE ALARM.

Ensure the Fire Brigade is notified -Dial 000. Activate any facility Emergency Warning Systems where installed (for example manual call point on the front of the fire indicator panels). Contact PSC representative and tell them what has occurred when it is safe to do so.

### EVACUATE TO A SAFE AREA.

Evacuate the building via the nearest safe exit route and wait for assistance from responding emergency services. Do not re-enter the facility unless instructed it is safe to do so (by the emergency service personnel).

### CONFINE THE SMOKE & FIRE.

Restrict the spread of the fire. Attempt to extinguish the fire, **only if safe and trained to do so**. Work in pairs.

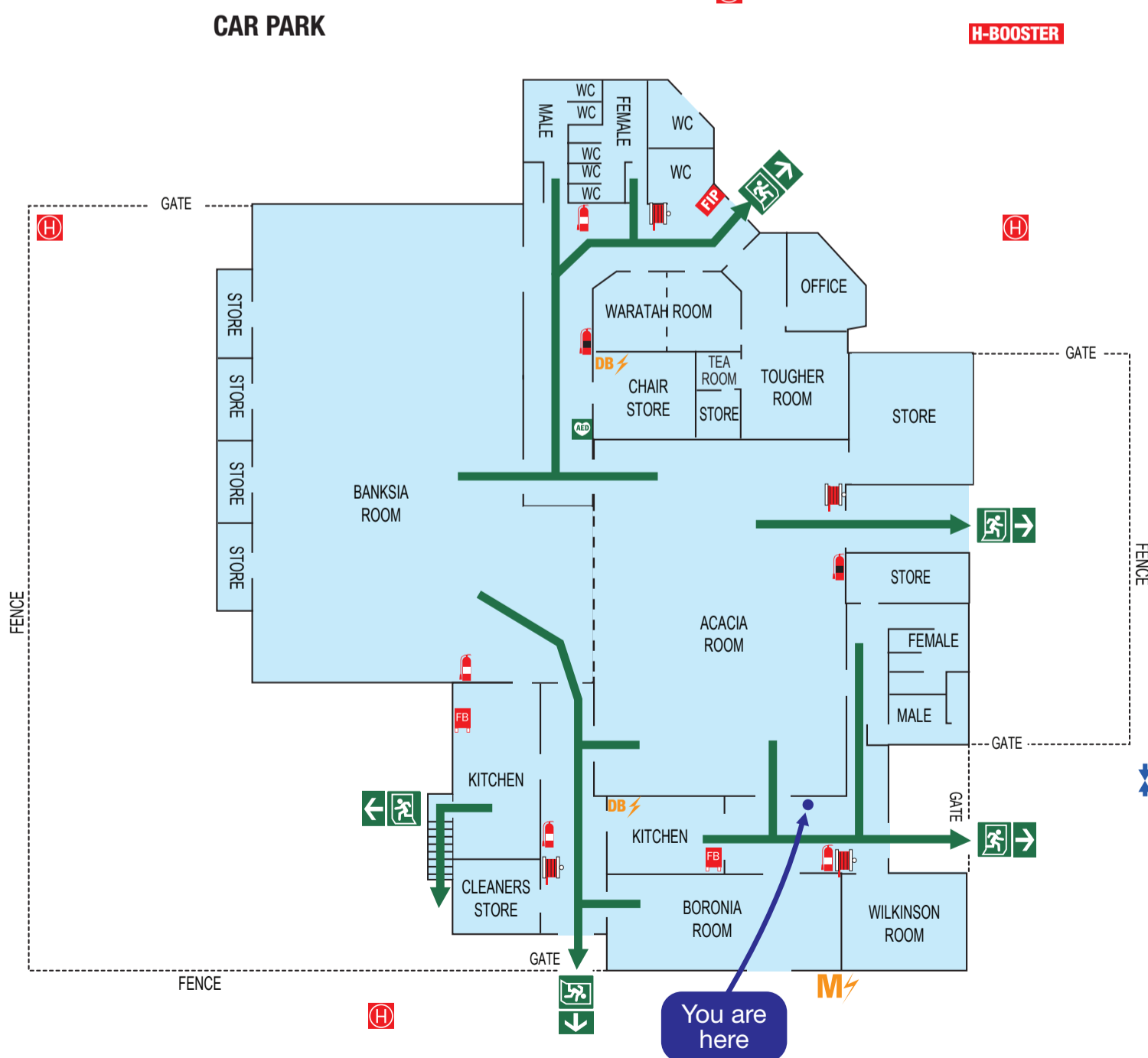


**EMERGENCY ASSEMBLY AREA IN PARK NEXT TO PUBLIC TOILET**

### LEGEND

- EXIT
- EXTINGUISHERS
- FIRE HOSE REEL
- FIRE HYDRANT
- FIRE BLANKET
- H-BOOSTER HYDRANT BOOSTER ASSEMBLY
- FIRE INDICATOR PANEL
- AUTOMATED EXTERNAL DEFIBRILLATOR
- MAIN ELECTRICAL SWITCHBOARD
- ELECTRICAL DISTRIBUTION BOARD
- WATER ISOLATION
- ASSEMBLY AREA

SUPPLY OF FIRST AID KITS ARE THE RESPONSIBILITY OF THE HIRER AND THEIR LOCATION MAY VARY



PLAN PREPARED TO AS3745-2010  
DATE ISSUED 31/07/2021  
IF NO CHANGES OCCUR THIS PLAN  
IS VALID TO JULY 2026

**PORT STEPHENS COUNCIL 4988 0255**  
**JOHN HUNTER HOSPITAL 4921 3000**  
**POISONS INFORMATION 131 126**

