

EVACUATION DIAGRAM & EMERGENCY PROCEDURES

Lemon Tree Passage Old School Centre 14 Kenneth Pde, Lemon Tree Passage NSW 2319

ON BECOMING AWARE OF AN EMERGENCY

REMOVE PEOPLE FROM DANGER AREA.

Assist others (particularly those that may be mobility impaired) to the facility's Emergency Assembly Area as shown below.

ALERT OCCUPANTS & RAISE THE ALARM.

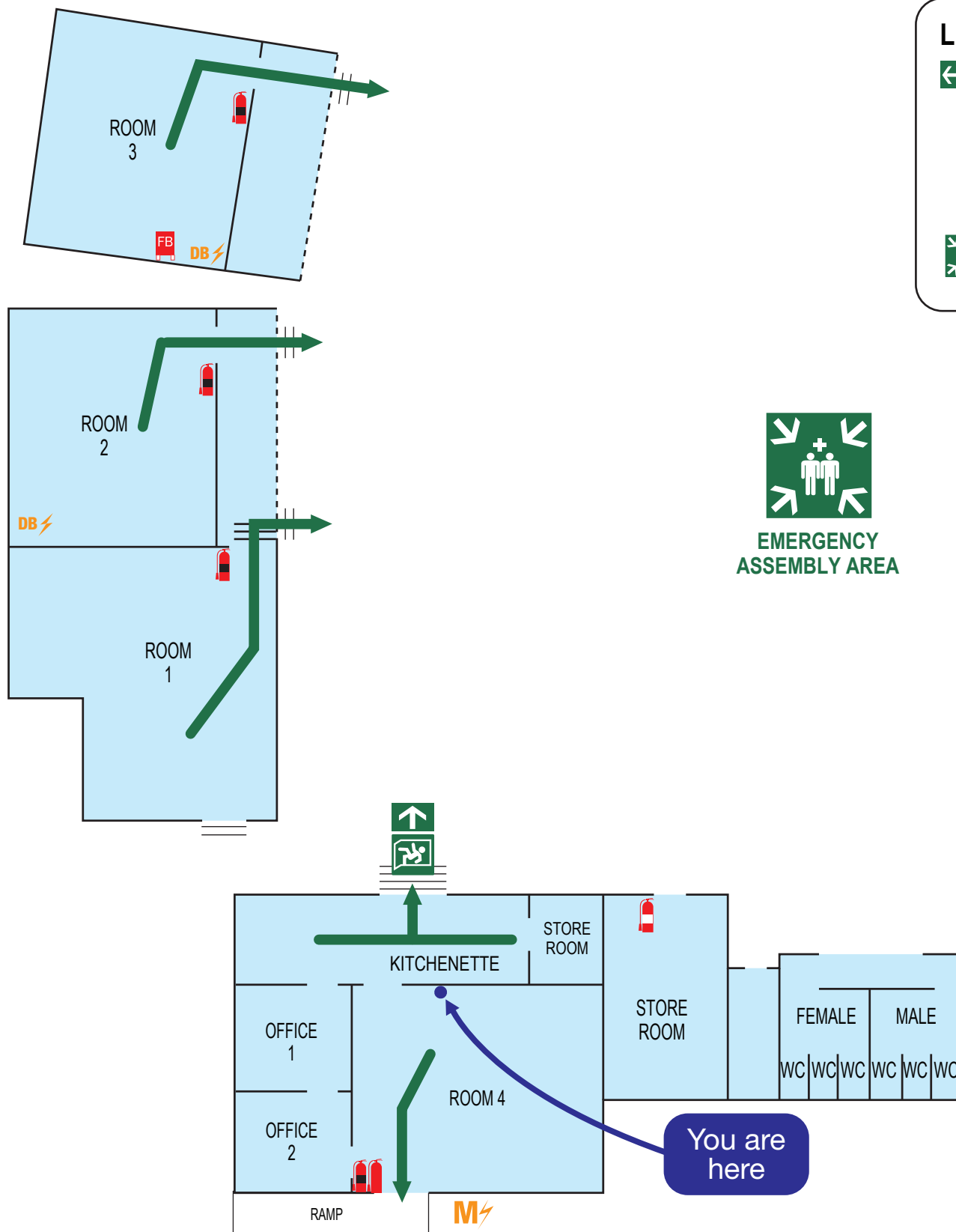
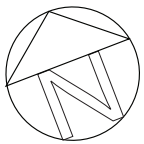
Ensure the Fire Brigade is notified -Dial 000. Activate any facility Emergency Warning Systems where installed (for example manual call point on the front of the fire indicator panels). Contact PSC representative and tell them what has occurred when it is safe to do so.

EVACUATE TO A SAFE AREA.

Evacuate the building via the nearest safe exit route and wait for assistance from responding emergency services. Do not re-enter the facility unless instructed it is safe to do so (by the emergency service personnel).

CONFINE THE SMOKE & FIRE.

Restrict the spread of the fire. Attempt to extinguish the fire, **only if safe and trained to do so**. Work in pairs.



LEGEND

- EXIT
- EXTINGUISHERS
- FIRE BLANKET
- MAIN ELECTRICAL SWITCHBOARD
- ELECTRICAL DISTRIBUTION BOARD
- ASSEMBLY AREA

SUPPLY OF FIRST AID KITS ARE THE RESPONSIBILITY OF THE HIRER AND THEIR LOCATION MAY VARY



EVACUATION DIAGRAM & EMERGENCY PROCEDURES

Lemon Tree Passage Old School Centre 14 Kenneth Pde, Lemon Tree Passage NSW 2319

ON BECOMING AWARE OF AN EMERGENCY

REMOVE PEOPLE FROM DANGER AREA.

Assist others (particularly those that may be mobility impaired) to the facility's Emergency Assembly Area as shown below.

ALERT OCCUPANTS & RAISE THE ALARM.

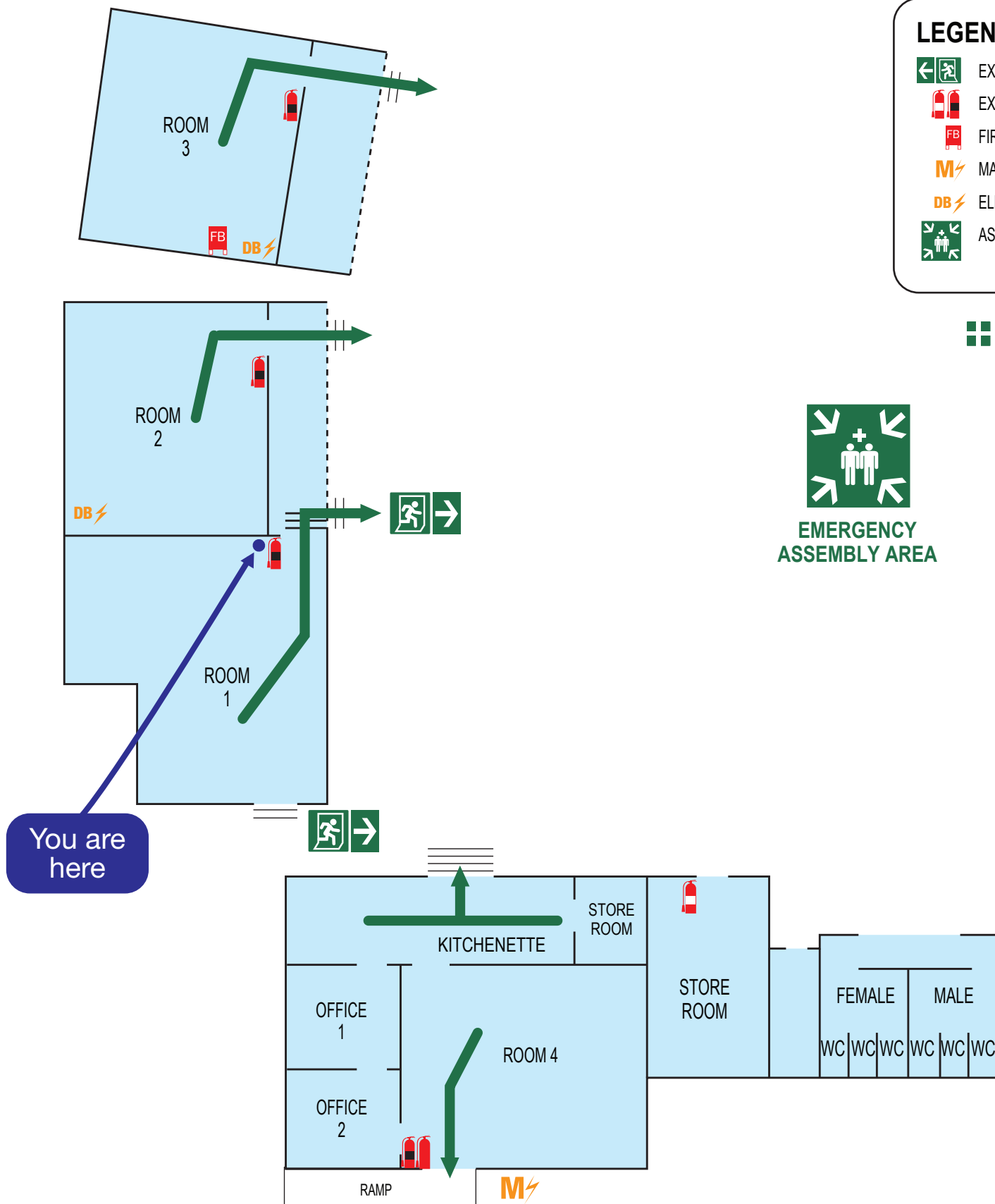
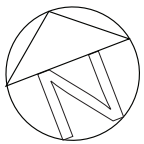
Ensure the Fire Brigade is notified -Dial 000. Activate any facility Emergency Warning Systems where installed (for example manual call point on the front of the fire indicator panels). Contact PSC representative and tell them what has occurred when it is safe to do so.

EVACUATE TO A SAFE AREA.

Evacuate the building via the nearest safe exit route and wait for assistance from responding emergency services. Do not re-enter the facility unless instructed it is safe to do so (by the emergency service personnel).

CONFINE THE SMOKE & FIRE.

Restrict the spread of the fire. Attempt to extinguish the fire, **only if safe and trained to do so**. Work in pairs.



LEGEND

- EXIT
- EXTINGUISHERS
- FIRE BLANKET
- MAIN ELECTRICAL SWITCHBOARD
- ELECTRICAL DISTRIBUTION BOARD
- ASSEMBLY AREA

SUPPLY OF FIRST AID KITS ARE THE RESPONSIBILITY OF THE HIRER AND THEIR LOCATION MAY VARY



EVACUATION DIAGRAM & EMERGENCY PROCEDURES

Lemon Tree Passage Old School Centre 14 Kenneth Pde, Lemon Tree Passage NSW 2319

ON BECOMING AWARE OF AN EMERGENCY

REMOVE PEOPLE FROM DANGER AREA.

Assist others (particularly those that may be mobility impaired) to the facility's Emergency Assembly Area as shown below.

ALERT OCCUPANTS & RAISE THE ALARM.

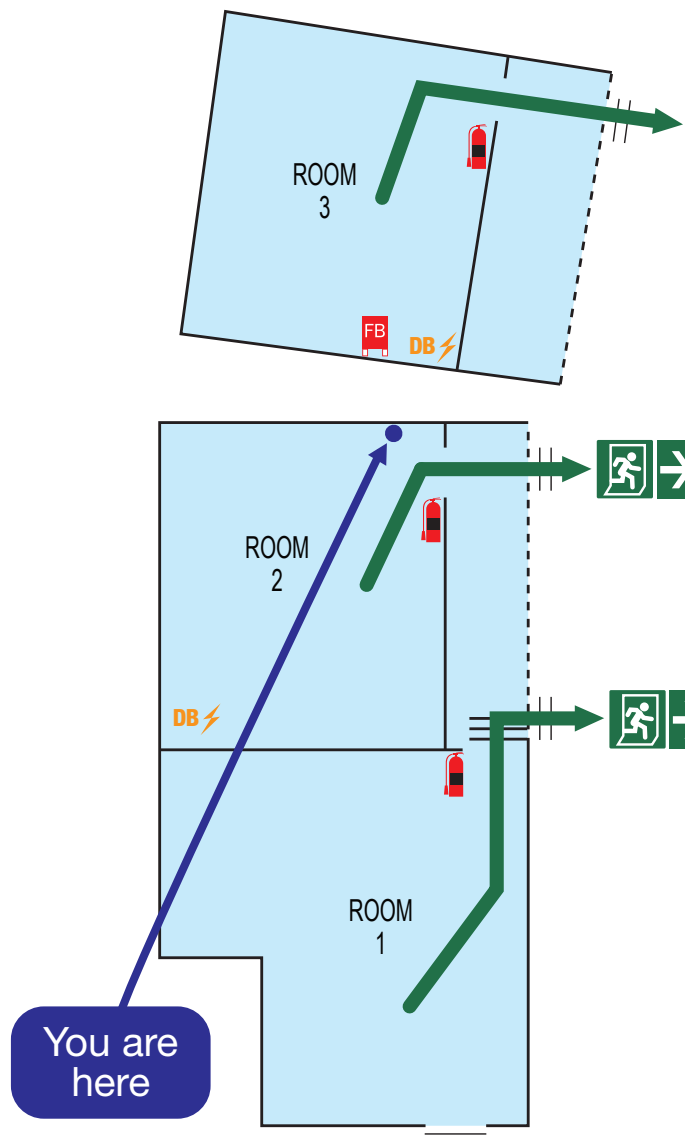
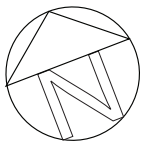
Ensure the Fire Brigade is notified -Dial 000. Activate any facility Emergency Warning Systems where installed (for example manual call point on the front of the fire indicator panels). Contact PSC representative and tell them what has occurred when it is safe to do so.

EVACUATE TO A SAFE AREA.

Evacuate the building via the nearest safe exit route and wait for assistance from responding emergency services. Do not re-enter the facility unless instructed it is safe to do so (by the emergency service personnel).

CONFINE THE SMOKE & FIRE.

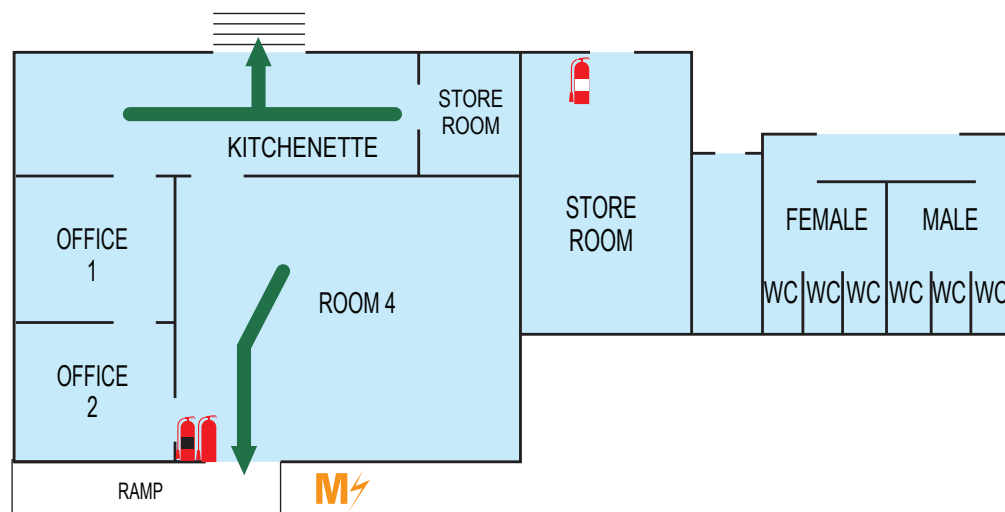
Restrict the spread of the fire. Attempt to extinguish the fire, **only if safe and trained to do so**. Work in pairs.



LEGEND

- EXIT
- EXTINGUISHERS
- FIRE BLANKET
- MAIN ELECTRICAL SWITCHBOARD
- ELECTRICAL DISTRIBUTION BOARD
- ASSEMBLY AREA

SUPPLY OF FIRST AID KITS ARE THE RESPONSIBILITY OF THE HIRER AND THEIR LOCATION MAY VARY



EVACUATION DIAGRAM & EMERGENCY PROCEDURES

Lemon Tree Passage Old School Centre 14 Kenneth Pde, Lemon Tree Passage NSW 2319

ON BECOMING AWARE OF AN EMERGENCY

REMOVE PEOPLE FROM DANGER AREA.

Assist others (particularly those that may be mobility impaired) to the facility's Emergency Assembly Area as shown below.

ALERT OCCUPANTS & RAISE THE ALARM.

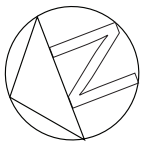
Ensure the Fire Brigade is notified -Dial 000. Activate any facility Emergency Warning Systems where installed (for example manual call point on the front of the fire indicator panels). Contact PSC representative and tell them what has occurred when it is safe to do so.

EVACUATE TO A SAFE AREA.

Evacuate the building via the nearest safe exit route and wait for assistance from responding emergency services. Do not re-enter the facility unless instructed it is safe to do so (by the emergency service personnel).

CONFINE THE SMOKE & FIRE.

Restrict the spread of the fire. Attempt to extinguish the fire, **only if safe and trained to do so**. Work in pairs.



SUPPLY OF FIRST AID KITS ARE THE RESPONSIBILITY OF THE HIRER AND THEIR LOCATION MAY VARY

LEGEND

- EXIT
- EXTINGUISHERS
- FIRE BLANKET
- MAIN ELECTRICAL SWITCHBOARD
- ELECTRICAL DISTRIBUTION BOARD
- ASSEMBLY AREA

