

Nelson Bay Town Centre | Location Plan



Concept Plan

Drinking fountain.
Co-locate existing tap.

Open space allows
option for moveable cafe
seating under outdoor
dining agreement

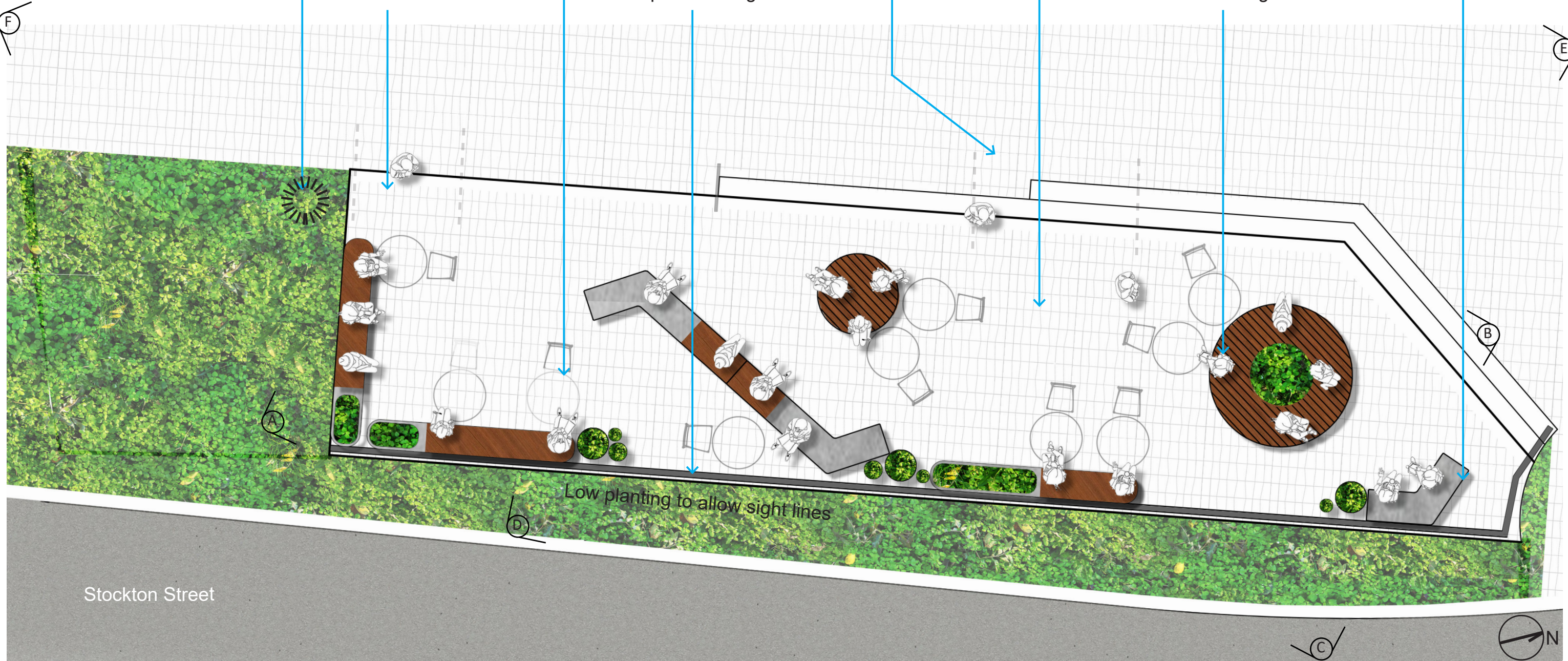
Barrier rail to
platform edge

Pedestrian entry
space to align to
food shops

Retention of
flexible open
space for small
events

Focal piece with
planting aligns with
view from Magnus St

Seating and planting
book end space with
end open for acoustic
performances



(A) = Visualisation view
locations

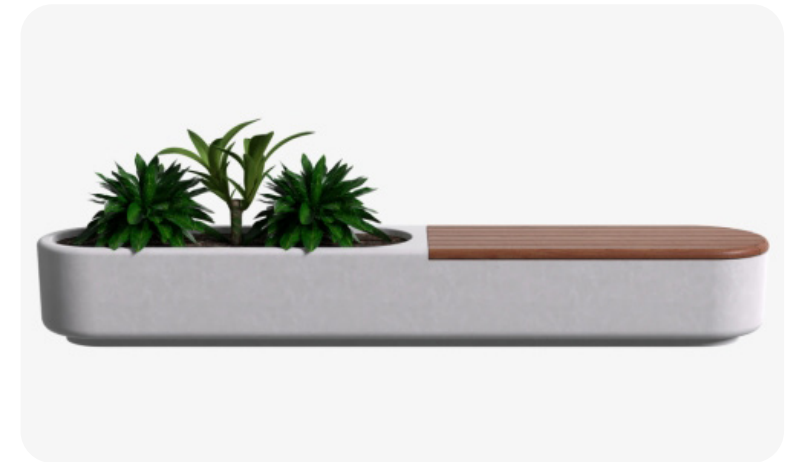
Precedents Images



Modular furniture with timber overlays



Visually open barrier rail to edge of raised area



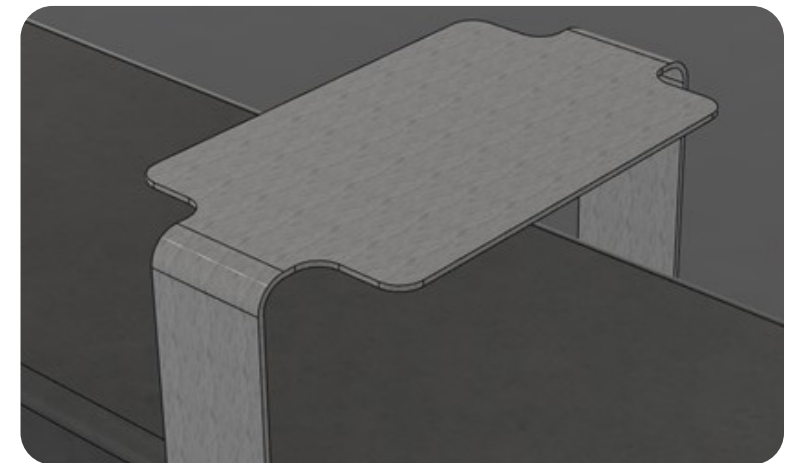
Modern material combinations and planting



Shade sail under-lit



Feature pots and modern planting to enclose spaces



Integrated table elements - in selected colour

Plant Palette



Sanseveria and Dichondra



Myoporum parvifolium



Correa alba



Ficinia nodosa



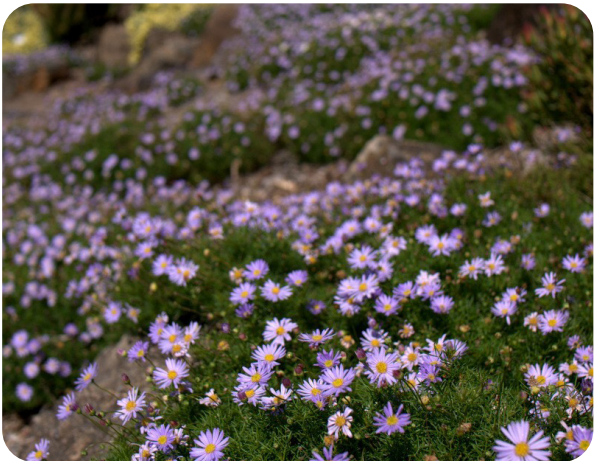
Lomandra "Tanika"



Alpinia nutans



Westringia "Smokey"



Brachyscome multifida



Grevillea "Flat Az"

Plant List

Botanical Name	Common Name
<i>Grevillea</i> cv. "Flat Az"	Grevillea "Flat Az"
<i>Brachyscome multifida</i>	Native Daisy
<i>Correa alba</i>	White Correa
<i>Ficinia nodosa</i>	Club Rush
<i>Myoporum parvifolium</i>	Creeping Boobialla
<i>Westringia</i> cv 'Smokey'	Coastal Rosemary 'Smokey'
<i>Dichondra argentea</i>	Silver Falls
<i>Lomandra longifolia</i> cv.	Matt rush "Tanika"
<i>Sanseveria trifasciata</i>	"Silver Queen"
<i>Alpinia nutans</i> dwarf	Dwarf Cardamon

The selected plants have been chosen in response to site conditions and received community feedback. Native species have been preferred as per feedback.

Selection is based on a predominantly native, modern, coastal plant palette with maintenance requirements suitable for use in the public domain. Additional plants may be added or substituted based on commercial availability.

Colour Palette Options



Colour Palette Selection



C: 50% M: 20% Y: 10% K: 0%
R: 127 G: 174 B: 204
Hex: 7FAECC



C: 100% M: 29% Y: 0% K: 42%
R: 0 G: 91 B: 139
Hex: 005A8A



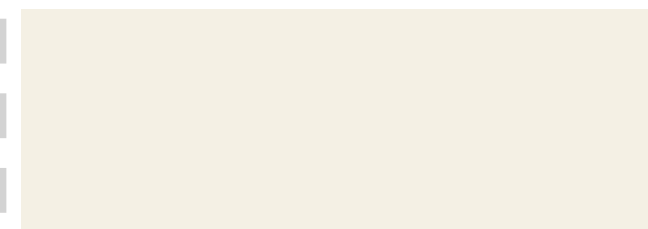
C: 78% M: 59% Y: 48% K: 29%
R: 67 G: 81 B: 92
Hex: 43515C



C: 23% M: 6% Y: 58% K: 0%
R: 202 G: 212 B: 136
Hex: CAD388



C: 6.5% M: 63% Y: 42% K: 0%
R: 229 G: 125 B: 124
Hex: E57D7C



C: 3% M: 4% Y: 9% K: 0%
R: 244 G: 240 B: 228
Hex: F4F0E4

Selected Colour
for feature items
following consultation

The colour palette represents many attributes of Nelson Bay and its outstanding natural beauty:

- **Shades of blue** for the pristine waters of the bay and lapping waves of Little Beach
- **Grey** for the resident dolphins of the Port and the pods of whales, which can be spotted on their annual migration along the coast.
- **Green** for the diverse vegetation of native bushland surrounding the Bay, the tree-lined town centre and the lush green grass of Apex Park.
- **Coral pink** for the incredible marine creatures beneath the water and the vibrant native Gymea Lilies that brighten our public spaces.
- **Sandy white** for the glittering beaches, white boats dotting the marina and the business frontages of the friendly Nelson Bay village.

Visualisations



A - Close view looking north



B - Close View looking south



C - View from Magnus Street



D - Close view from Magnus Street

Visualisations



E - View looking South

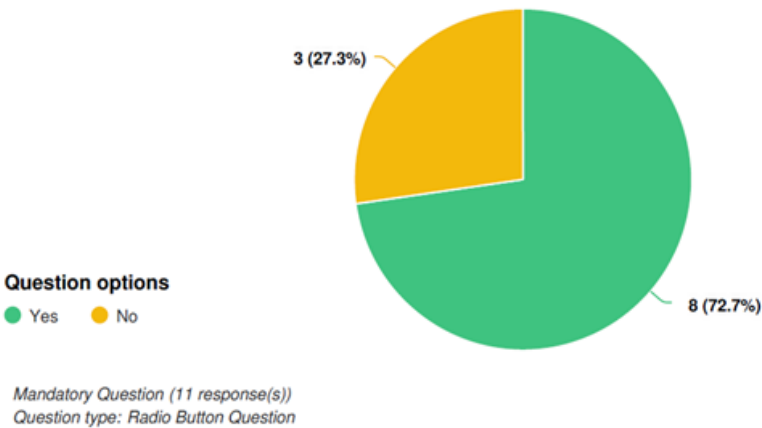


F - View looking North

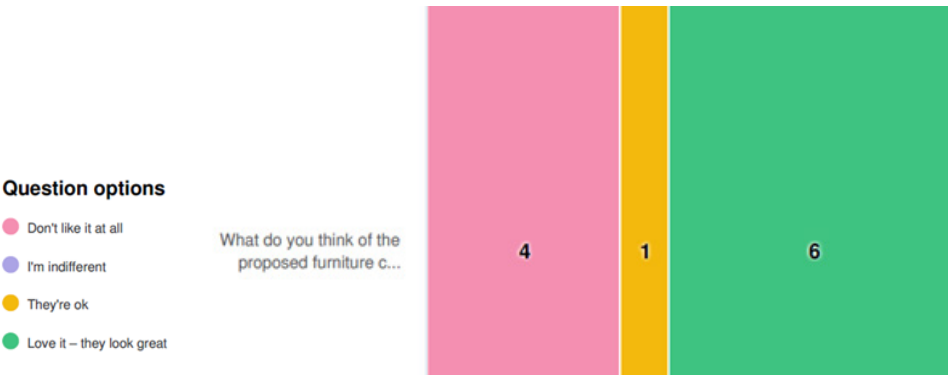
Consultation Results

The amendments to earlier concept iterations are in response to feedback received from the community, physical site requirements and urban design best principles. A summary of the feedback received is shown below.

Do you think the changes will strengthen visual and physical connection and integration with Magnus Street.



What do you think of the proposed street furniture?



What do you think of the proposed plant palette?



What do you think of the proposed colour palette?

