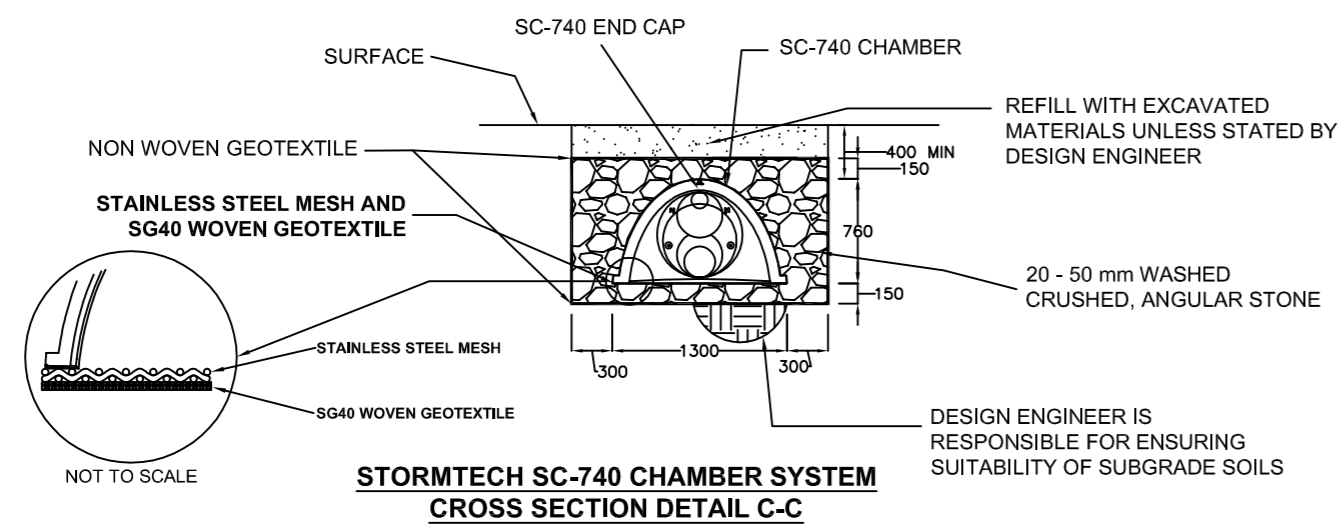
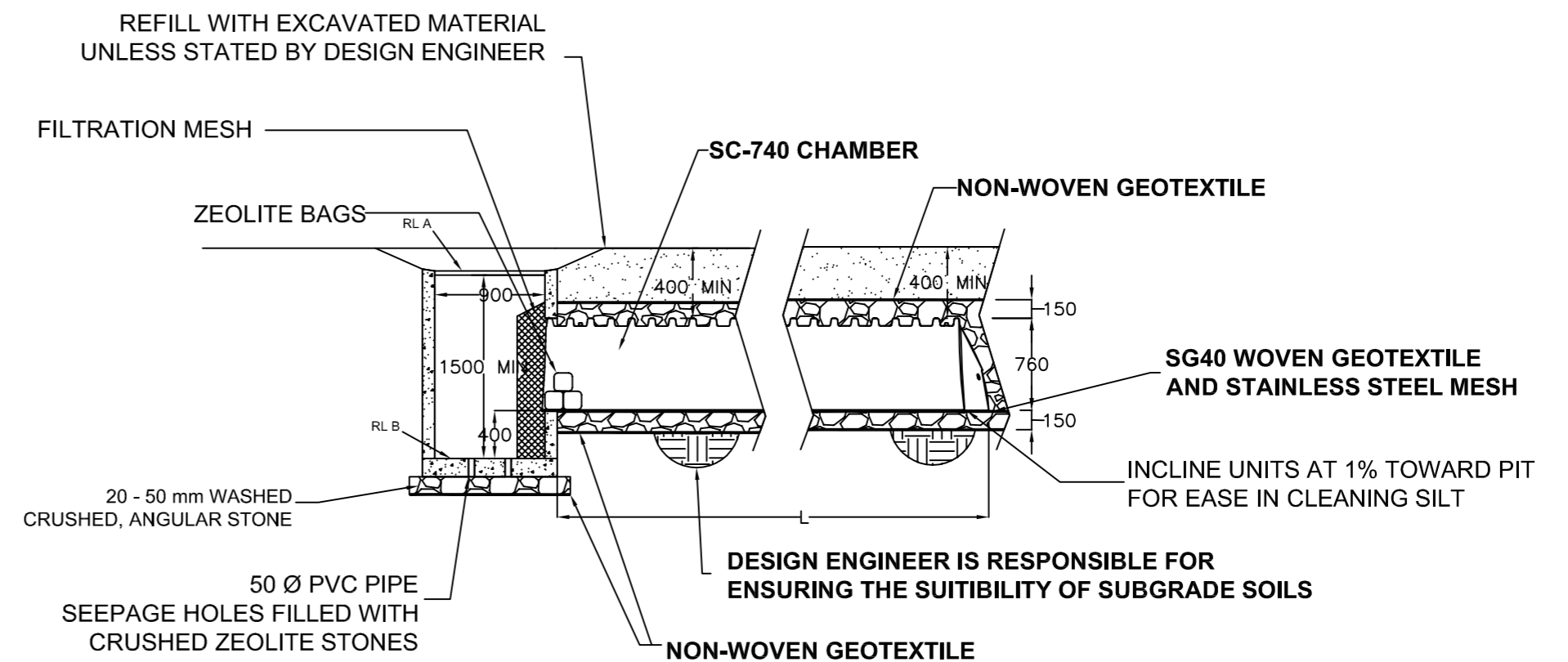


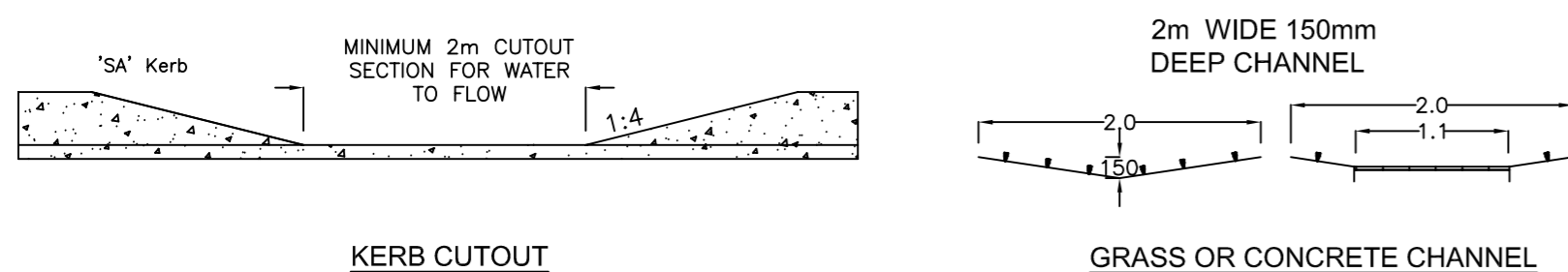
Date	Amendment	Officer	Date	Amendment	Officer



**STORMTECH SC-740 CHAMBER SYSTEM  
CROSS SECTION DETAIL C-C**

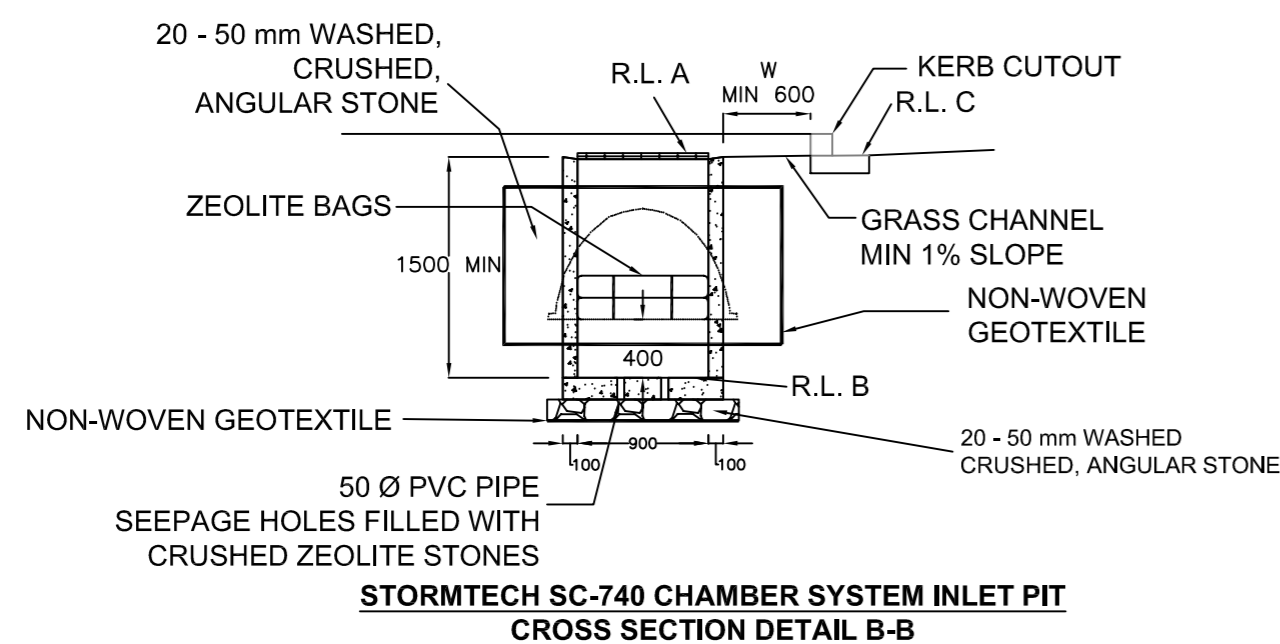


**STORMTECH SC-740 CHAMBER SYSTEM  
CROSS SECTION DETAIL A-A**

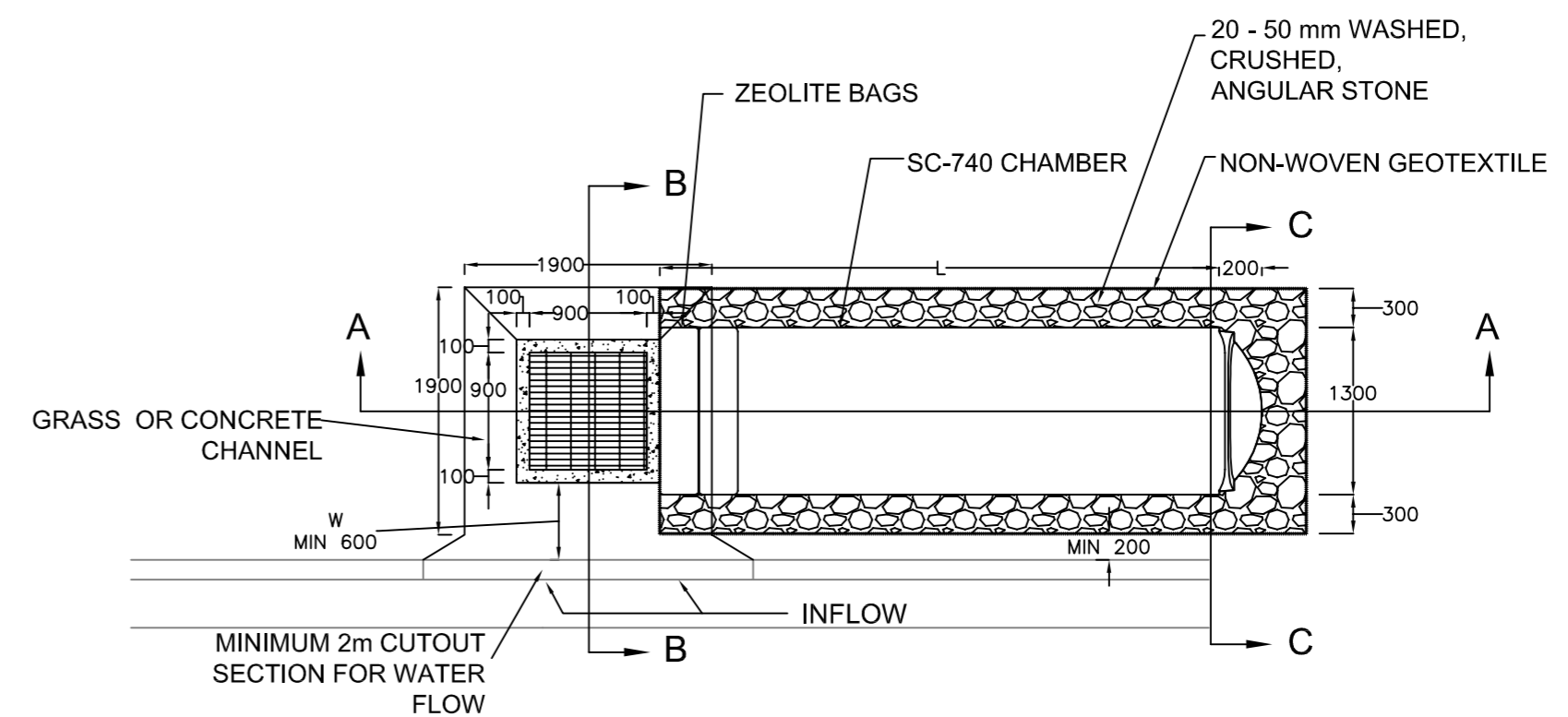


**KERB CUTOUT**

**GRASS OR CONCRETE CHANNEL**



**STORMTECH SC-740 CHAMBER SYSTEM INLET PIT  
CROSS SECTION DETAIL B-B**



**STORMTECH SC-740 CHAMBER SYSTEM  
PLAN**

NOTE: ALL PITS TO BE INSTALLED WITH LITTER BASKETS

© PORT STEPHENS COUNCIL 2007

DATUM	SCALES
A.H.D.	Plan: 0 0.5 1 1.5 2
SSM 107124	Hor.: 0 0.5 1 1.5 2
R.L 19.716	Vert.: 0 0.5 1 1.5 2

SURVEY: M Hana Jan '07  
DESIGNED: S Budden Jan '07  
CHECKED: N Sivabalan Jan '07

THESE DRAWINGS HAVE BEEN CHECKED ON SITE AND ARE RECOMMENDED



STANDARD INFILTRATION DRAINAGE SYSTEM TYPE 2

FILE No: PSC2005-2540	No OF SHEETS: 3	SHEET No: 2
SHEET DESCRIPTION: PLAN AND CROSS SECTION		PLAN No: D 133
FILE: M:\Jobs\Nels\92\D 133-02	A2	