

TABLED DOCUMENT

ITEM NO. 3

3) RAAF BASE WILLIAMTOWN AND SALT ASH WEAPONS
RANGE 2025 AUSTRALIAN NOISE EXPOSURE FORECAST
MAP

ORDINARY COUNCIL MEETING
9 JULY 2019



PORT STEPHENS

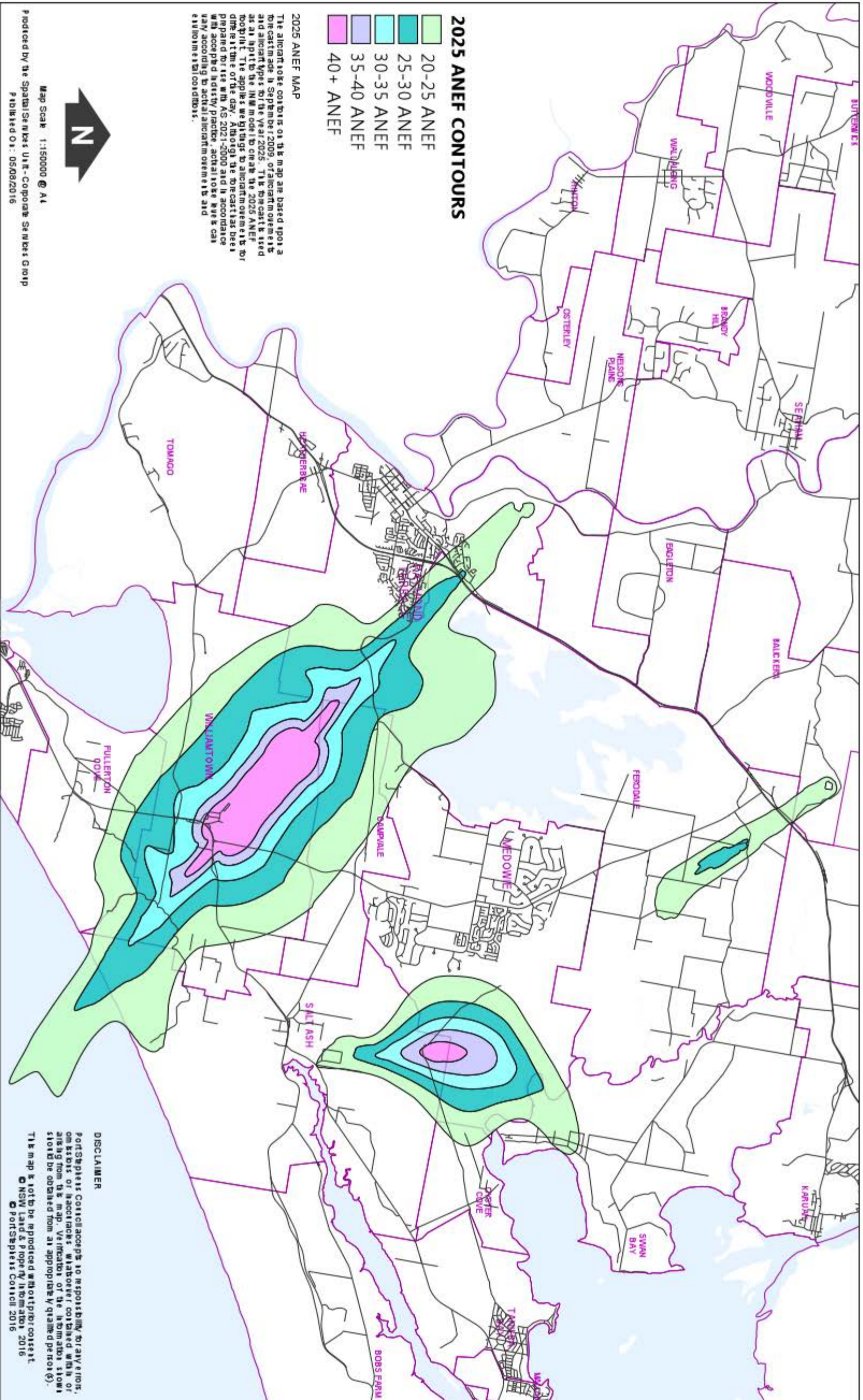
C O U N C I L

RAAF Base Williamtown & Salt Ash Weapons Range 2025 Australian Noise Exposure Forecast Map



PORT STEPHENS
COUNCIL

A: 116 Adelaide Street Raymond Terrace NSW 2334
T: (02) 4893 0255 F: (02) 4887 3612
E: council@portstephens.nsw.gov.au
W: <http://www.portstephens.nsw.gov.au/>



DISCLAIMER

Port Stephens Council accepts no responsibility for any errors, omissions or inaccuracies whatsoever contained within or arising from this map. Verifications of the information shown should be obtained from an appropriate qualified person(s).

This map is not to be reproduced without prior consent © NSW Land & Property Information 2016 © Port Stephens Council 2016

Map Scale 1:150000 @ A1
Produced by the Spatial Services Unit - Corporate Services Group
Published On: 05/08/2016