



Port Stephens Development Control Plan 2014

Extraneous Lighting (CASA)

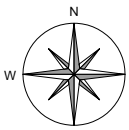
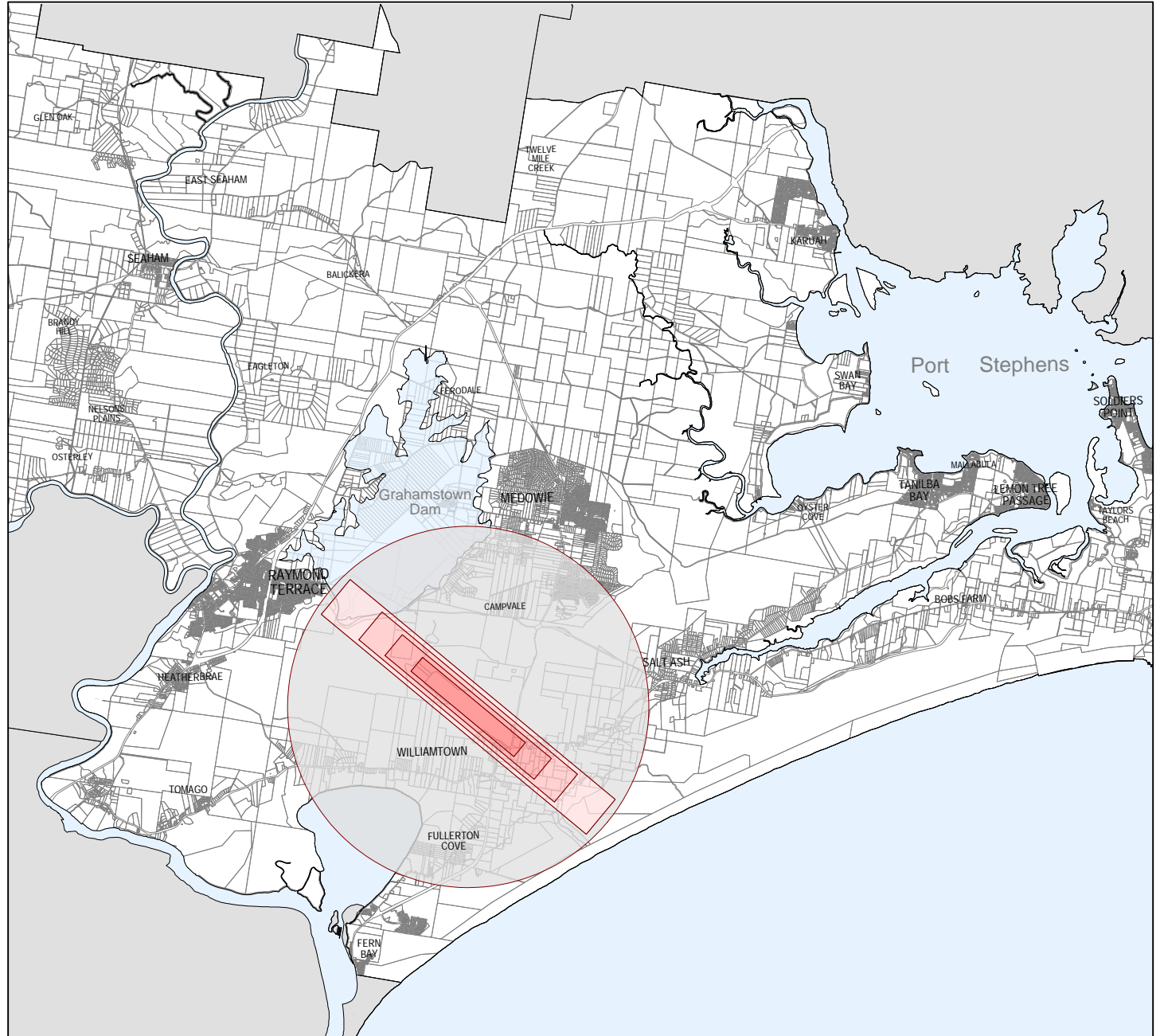
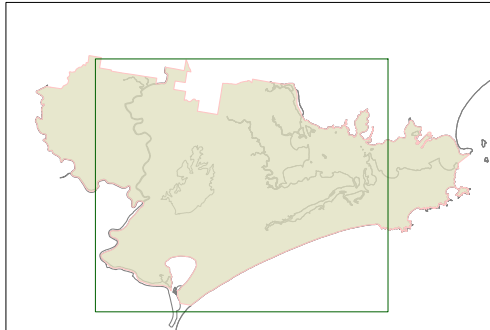
- Zone 'A' 0 cd
- Zone 'B' 50 cd
- Zone 'C' 150 cd
- Zone 'D' 450 cd

6 km radius, Controlled Light Installation Area

Maximum intensity of light source measured at 3 degrees above horizontal.

Cadastre

Cadastre 25/05/2015 © Land and Property Information (LPI)



DISCLAIMER

Port Stephens Council accepts no responsibility for any errors, omissions or inaccuracies whatsoever contained within or arising from this map. Verification of the information shown should be obtained from an appropriately qualified person(s).

This map is not to be reproduced without prior consent.

© NSW Land & Property Information 2015
© Port Stephens Council 2015 © VEKTA Pty Ltd 2012

SCALE 1:199999 @ A4

PRINTED ON: 16.11.15