

# Biodiversity Assessment & Approval Pathways for non-IDA Councils



## Native vegetation

Note: Native vegetation is defined under Part 5A, Division 1 Section S60B of the LLS Act

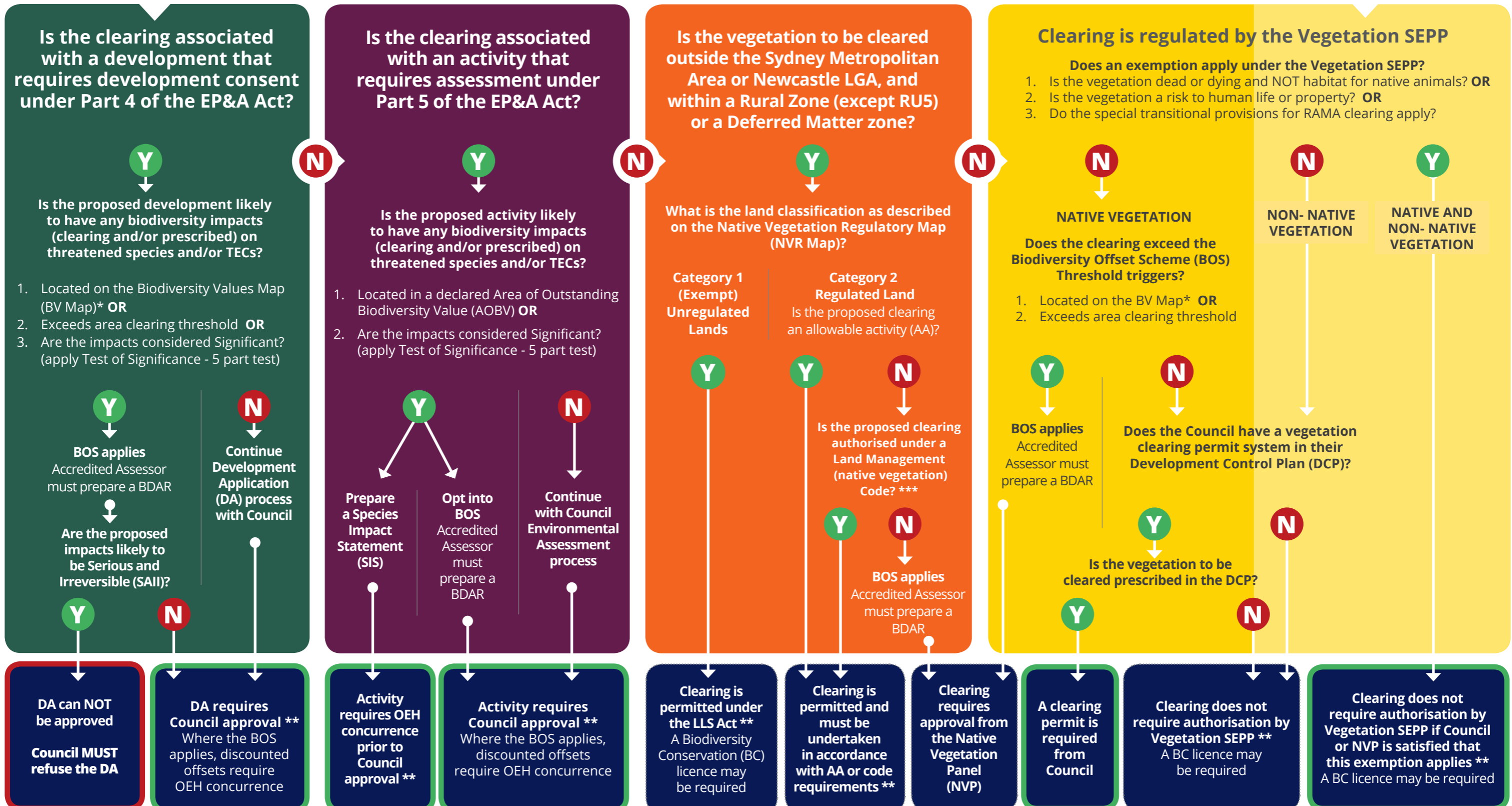
## Non-native vegetation

### PART 4 LOCAL DEVELOPMENT PATHWAY

### PART 5 ACTIVITY / ISEPP PATHWAY

### LLS ACT PATHWAY

### VEGETATION SEPP PATHWAY



\*Note: Prescribed Impacts including non-native vegetation on the BV Map will trigger the BOS

\*\*Note: Other legislative requirements must be considered

\*\*\*Note: Clearing of non-native vegetation on Category 2 Vulnerable Lands is regulated by the LLS Act